

**Merced College  
Merced Community College District  
3600 M Street  
Merced, CA 95348**

**Substantive Change Proposal  
August 2010**

**Addition of Courses that Constitute 50% or More of a  
Program Offered at a Location off the Main Campus: Los  
Banos**

**Anne Newins  
Vice President Student Services  
Accreditation Liaison Officer**

## Table of Contents

A. Description and Reasons for Proposed Change .....	3
C. Planning Process Description.....	5
D. Evidence of Adequate Resources.....	7
E. Evidence of Necessary Internal and External Approvals .....	14
F. Accreditation Eligibility Requirements .....	14
G. Accreditation Standards and Relevant Commission Policies .....	21
Attachments.....	24
Attachment 1: Boundary Map.....	16
Attachment 2: Los Banos Campus Courses.....	26
Attachment 3: Degrees/Certificates (50% or more) available at Los Banos Campus ..	47
Attachment 4: Mission/Vision .....	49
Attachment 5: Excerpts from Educational/Facilities Master Plan.....	50
Attachment 6: Los Banos Campus Map .....	53
Attachment 7: Office of Instruction Organization Chart .....	54
Attachment 8: District Agenda, August 2010.....	55
Attachment 9: Chancellor's Office Site Approval Correspondence.....	63
Attachment 10: Budget Information by Selected Expenditure Areas.....	66

**SUBSTANTIVE CHANGE PROPOSAL  
LOS BANOS CAMPUS PROGRAM OFFERINGS  
MERCED COLLEGE  
MERCED COMMUNITY COLLEGE DISTRICT**

**A & B. Description and Reasons for Proposed Change**

The Merced Community College District (MCCD/District) was established in northern Merced County in 1963, originally consisting of 110 acres presented as a gift by the C-H-M Company and the Yosemite Land and Cattle Company through the efforts of City of Merced officials. Today, the District serves a geographic area of approximately 2,380 square miles and includes the addition of two physical sites, a state approved educational center known as the Los Banos Campus, which is located in Los Banos and the Business Resource Center (BRC) located in downtown Merced (Attachment 1).

The Los Banos Campus, a full-service educational center 40 miles from the Merced campus, serves the communities of Los Banos, Dos Palos, and the immediate surrounding areas. Merced College has operated a center in Los Banos since 1971 beginning in a rented building and opening its new campus in spring 2007. In fall 2006, the number of students served was 968 representing 239 FTES. Since its opening, the number of students served increased 60.5 percent to 1,600 representing 1,000 FTES. Full time faculty increased from 8.5 (10 positions with 3 shared) to 15.5 (16 positions with 1 shared) representing a 55 percent increase.

The campus offers a wide variety of coursework for personal, professional, and academic enrichment. The expanded footprint of the campus and allocation of full time faculty have allowed the Los Banos Campus to increase its enrollment and full time faculty positions, providing an opportunity to offer more courses leading to a student's ability to complete 50 percent or more courses within several programs. Courses available at the Los Banos Campus allow students to complete fifty percent or more of degrees and/or certificates in the following areas (Attachments 2 and 3):

- Accounting AA
- Accounting CT
- Anthropology AA (Archeology)
- Anthropology AA (Cultural)
- Anthropology AA (Physical)
- Art and Humanities AA
- Biology AS
- Biotechnology AS
- Biotechnology CT
- Business Administration AA
- Child Development AA
- Communications AA
- Criminal Justice AA
- Criminal Justice CT
- CSU General Education Breadth
- Early intervention Assistant CT
- Foster Care Education CL
- General Business AA
- General Business CT
- Health Sciences AA
- History AA
- IGETC
- International Studies AA
- Lab Technology AS
- Liberal Studies AA
- Life Science AA

- Management Information Systems AS
- Merchandising Management AA
- Merchandising Management CT
- Natural Studies AA
- Nurse Assistant CT
- Physical Science AA
- Psychology AA
- Small Business Management AA
- Small Business Management CT
- Social & Behavioral Sciences AA
- Spanish AA
- Supervisory Training AA
- Supervisory Training CT
- Visual Arts AA

This situation precipitates the need for a Substantive Change Proposal notifying the Accrediting Commission for Community and Junior Colleges (ACCJC) of degrees/certificates offered at a location other than the main campus as prescribed by ACCJC’s policies. It should be noted that not all of the classes required to meet 50 percent of a degree or certificate are offered every semester.

The courses offered at the Los Banos campus are under the jurisdiction of Merced College and part of the Merced Community College District’s Educational Master Plan to distribute educational opportunities in areas where students have the ability to benefit. Consequently, these classes provide the opportunity to complete a degree or certificate at Los Banos campus and preclude the need to travel to the main campus.

Relationship to College Mission and Vision

Coursework offered at locations other than the main campus supports the Mission and Vision of the College and its commitment to serving students with challenging educational opportunities in a supportive environment, and fostering an environment of respect and support for diversity (Attachment 4). Courses offered at the Los Banos Campus directly increase the public’s access to higher education in Merced’s service area. As a part of fulfilling the Mission and Vision of the College regarding course offerings, students are able to obtain general education for transfer to universities and the completion of much of the College’s Associate Degree Breadth Requirements as well as many courses for completion or near completion of several degrees and certificates.

Rationale for Change

The Merced Community College District serves a student population whose lives are complex and demanding and reside in a large geographic region which is primarily rural and agricultural in nature. Offering more comprehensive coursework in Los Banos provides many of these students with educational opportunities that work with their schedules and reduces educational expenses associated with travel. The District’s administration has thus recognized that the region would be best served by distributing educational opportunities in an economically feasible manner by offering courses at several locations and by distance education. This approach supports the District’s commitments as stated in the Vision 2020 statement which is contained in the Educational/Facilities Master Plan: In Cadence With The Future 2001-2020 (Attachment 5).

### C. Planning Process Description

Over the last 47 years, the District has leveraged state and local dollars and engaged in a master planning process that visualized the growth and change of its educational programs and services and the facilities needed to support the mission of the District. Through the master planning committees all issues related to staffing, facilities, instruction, technology, administration and student services needs are weighted and incorporated into the College’s budgetary resources. Planning committees identify institutional priorities and influence the acquisition and allocation of human, financial and physical resources.

Specifically, the Facilities Master Planning Committee (FMPC), established in 1991 as one of five master planning committees, plans for new and remodeled facility projects, to produce the appropriate requests for “campus build out” and to submit Capital Outlay Budget Change Proposals, Preliminary Plans Proposals and Final Project Proposals to the state. FMPC, in coordination with the EMPC, is also responsible for In Cadence With the Future, an educational and facilities master planning document (Attachment 5). As a follow up to In Cadence With the Future, the College’s Long-Range Master Plan was completed in March 2001 to “graphically depict the facility needs of the campus at its build out, as well as address some incremental first steps.” This plan projects the growth of the campus through 2040.

In 2003, the state approved a project proposal the new Los Banos Campus located on 125 acres to the west of the City of Los Banos along Highway 152. The buildings at the Los Banos Campus include twelve lecture classrooms, three science labs, one art lab, four computer labs, offices and a library (Attachment 5). The campus serves approximately 1,600 students and generates approximately 1,000 FTES per academic year representing a 39 percent increase in FTES since moving to the new location. Because of the recent budget cuts, enrollment is likely to stabilize at the Los Banos Campus for the next few years because of the inability of the District to offer additional course sections at any location.

Fall of Year	Census FTES	% change from previous year	% change from 2006 (old campus)
2006	239	-	-
2007	298	25%	25%
2008	342	15%	43%
2009	369	8%	54%
2010	433	17%	81%

#### Relationship to College Mission

Distributed educational offerings support the Merced Community College District’s stated philosophy to encourage active participation in a democratic society by providing

educational opportunities for all who qualify and can benefit. The educational services provided by the College enhance the cultural, economic and social life of the community and respond to its changing needs.

#### Needs and Resources Assessment

Distributed educational offerings give Merced College a vehicle for serving and providing access that is convenient to students and without which they might not be able to attempt college course work. Courses offered at the Los Banos Campus provide general education leading to completion of breadth requirements for all degrees and transfer agreements with the California State Universities and University of California. Merced College has allocated the resources necessary to support its education offerings at all locations and in all delivery modes, which also are discussed in Section D.

#### Anticipated Effect on the College

Providing a full range of classes at the Los Banos Campus should increase the number of certificates and degrees awarded by the College by broadening access within its student service area. Over the long term, total college enrollment should increase as students enroll for classes at the Los Banos Campus instead of abandoning their educational goals. In the very long term, the Los Banos Campus may offer programs not available in Merced, but no specific plans have been made in this area to date.

#### Intended Improvements

Offering distributed educational courses to location, including Los Banos, provides the College with the capacity to serve the southwestern edge of the county as well as serving students whose personal demands prevent them from physically attending classes at the main campus.

#### Description of Preparation Process

Merced College programs and courses are developed following a standard protocol. As a center of Merced College, curriculum used at the Los Banos Campus is integrated into the standard process. All sites and methods use the same curriculum.

The planning process for programs and course curriculum includes:

- Instructional program review:
  - Conducted regularly for each program.
  - Monitored and peer reviewed by the Instructional Program Review Committee.
  - Reviewed by the Instructional Master Planning Committee.
  - Oversight by the Educational Master Planning Committee.
- Curriculum Committee:
  - Approves new/updates for courses and programs on a regular cycle.
  - Board of Trustees approval of all courses and programs.
  - Chancellor's Office approval for all new programs.

All courses follow a rigorous approval process through the Curriculum Committee. Transfer courses are submitted through the articulation process for approval for IGETC (Intersegmental General Education Transfer Credit), CSU Breadth (California State

University), and US-TCA (University of California Transfer Credit Approval). If a course is not approved for transfer, the faculty are notified and offered the option to redesign the course. Courses designed for transfer are offered only if they have prior approval for transfer credit from the four-year institutions of higher education.

#### **D. Evidence of Adequate Resources**

##### Faculty, Management, and Support Staffing

**Faculty:** Faculty members assigned to teach at the Los Banos Campus are members of academic divisions, possess the required minimum qualifications and are evaluated using the same process as faculty teaching at the main campus. All full time and most adjunct Los Banos faculty teach exclusively at this campus. Full time faculty members have offices on site. Adjunct faculty members have space for meeting with students at the Los Banos Campus (Attachment 6). The contractual load and funds are allocated through the regular College budget processes.

**Management:** Merced College assigns an Instructional Dean to the Los Banos Campus. The dean oversees all aspects of the campus operation working in concert with those at the main campus. The dean of the Los Banos Campus schedules classes offered at this location and reports to the Vice President of Instruction (Attachment 7). The dean of the Los Banos Campus maintains regular and frequent communication with the vice-presidents of instruction, student services, and administrative services.

**Support Services:** Both the Merced and Los Banos campuses of the Merced Community College District (MCCD/District) enjoy the advantages of sharing a well-developed system of student support services. This network of services augments the academic needs of a diverse student body and supports the mission of the institution which is, “Students are our focus and we are known by their success.” Numerous offices and venues on both campuses work collaboratively to provide accessible and comprehensive student support services for enrolled students or those anticipating enrollment. Staff and managers from the Merced Campus meet with their counterparts at the Los Banos Campus on a regular basis.

The Los Banos Campus offers a variety of support services staff to assist students in meeting their learning objectives at this location. There are three full time counselors, including one dedicated to serving students with disabilities. Other counseling is targeted for Extended Opportunity Programs and Services (EOPS) students. There are 1.5 full time general counselors, plus one adjunct counselor (totaling approximately 2.0 FTE) available to serve general students. Office hours are nearly identical to those in Merced.

Students may receive all of the same supportive services at the Los Banos Campus as they would in Merced. The following lists the services offered regularly at this campus:

- Academic Counseling
- Assessment Testing
- Admissions and Registration

- Bookstore
- Disabled Student Services
- EOPS
- Faculty Offices
- Financial Aid
- Free Tutoring
- Library
- New Student Campus Orientation
- Open Multipurpose Computer Lab
- Services for Students Receiving Aid from CalWORKS
- Student Health Services
- Transfer and Career Counseling

Equipment and Facilities

The College dedicates adequate resources to support the Los Banos Campus (Attachment 6). The Los Banos Campus library includes footage designed for and is used as bookstore space. Additionally, the Los Banos Campus library includes one meeting room as well as a computer room with seven computers linked to the Internet for use in research and word processing only. Eight computer stations linked to the Internet are available for research only and the library has student access to the Merced College wireless network. An Open Computer Lab is available for other computer activities.

Long Term Fiscal Resources

Staff salaries and technical resources are funded by Merced College through the existing College budget allocation process. The budget information below reviews the expenditures in various account lines over the past four years. A series of summarized budget information may be found in Attachment 10. As will be seen, the funding for the campus has steadily increased.

		Actual 2007	Actual 2008	Actual 2009	Actual 2010	Allocated 2011
FTE INST	BIOLOGY	\$58,720.08	\$128,682.00	\$121,051.90	\$75,948.00	\$73,544.00
FTE INST	MICROBIOLOGY			\$0.00	\$11,381.60	\$14,709.00
FTE INST	ANATOMY &PHYSIO			\$0.00	\$33,291.20	\$44,127.00
FTE INST	FINE ART			\$0.00	\$2,912.34	\$0.00
FTE INST	ARTS	\$22,987.43	\$23,280.98	\$21,909.60	\$0.00	\$0.00
FTE INST	PHOTO	\$8,353.83	\$9,412.79	\$11,523.90	\$4,021.81	\$0.00
	CD & EARLY					
FTE INST	CARE	\$83,810.70	\$87,352.02	\$72,102.02	\$44,528.12	\$46,578.00
FTE INST	ENGL	\$96,049.04	\$108,491.71	\$94,302.06	\$95,015.62	\$193,680.00
FTE INST	Language Arts			\$0.00	\$0.00	\$64,286.00
FTE INST	PHIL			\$2,562.60	\$0.00	\$0.00
FTE INST	MATH	\$99,864.60	\$89,643.02	\$128,329.40	\$159,108.52	\$196,050.00
FTE INST	MATH SKILLS			\$0.00	\$0.00	\$71,408.00
FTE INST	PHYS SCI	\$6,758.99	\$20,018.13	\$14,482.25	\$18,416.72	\$8,324.00



FTE INST	PHYSICS	\$8,318.98	\$1,726.96	\$0.00	\$0.00	\$0.00
FTE INST	CHEM	\$20,440.08	\$18,233.51	\$32,216.15	\$37,802.72	\$54,105.00
FTE INST	SOC SCI			\$0.00	\$0.00	\$0.00
FTE INST	HISTORY			\$0.00	\$45,125.48	\$41,370.00
FTE INST	POLY SCI			\$0.00	\$21,235.52	\$27,580.00
FTE INST	COMM SKILLS			\$0.00	\$21,284.71	\$0.00
FTE INST	WRITING	\$66,307.28	\$81,895.49	\$65,280.32	\$78,012.78	\$0.00
FTE INST	PREALGEBRA	\$48,509.92	\$67,157.59	\$65,716.74	\$95,859.04	\$0.00
FTE INST	READING SKL	\$44,410.90	\$54,820.92	\$66,929.03	\$48,114.56	\$0.00
FTE INST	ESL		\$20,338.04	\$22,740.10	\$0.00	\$0.00
FTE NON-INST	ENGL			\$12,812.90	\$3,170.61	\$18,073.00
FTE NON-INST	Language Arts			\$0.00	\$0.00	\$4,324.00
FTE NON-INST	READING SKL			\$0.00	\$3,170.61	\$0.00
FTE NON-INST	DEAN			\$0.00	\$11,944.98	\$0.00
FTE NON-INST	FACULTY LEAD			\$0.00	\$221.20	\$0.00
FTE NON-INST	CURR	\$16,215.20	\$18,460.30	\$0.00	\$0.00	\$0.00
FTE NON-INST	COUNSL		\$2,557.26	\$73,881.34	\$68,950.15	\$77,046.00
FTE CERT						
ADMIN	DEAN	\$90,431.04	\$101,343.96	\$107,415.00	\$112,785.96	\$118,157.00
HRLY CERT	LIB	\$16,571.36	\$18,768.24	\$17,483.69	\$14,792.40	\$19,428.00
HRLY CERT	COUNSL		\$8,470.37	\$26,999.05	\$22,088.00	\$29,214.00
1x HRLY CERT	COUNSL				\$2,234.93	\$5,000.00
B/S STUS	COUNSL		\$20,095.66			
HRLY CERT	OFC FAC DEV	\$1,803.84				
HRLY CERT	INFO OFC	\$50.00	\$150.00	\$0.00	\$0.00	\$0.00
FTE CL	DEAN	\$83,970.88	\$91,941.96	\$82,002.73	\$78,271.15	\$80,940.00
	STU PERS					
FTE CL	ADM	\$23,751.17	\$52,215.40	\$61,328.46	\$47,820.00	\$48,300.00
FTE CL	FIN AID			\$0.00	\$25,002.00	\$26,334.00
FTE CL	OTH STU SVC		\$23,303.43	\$30,060.00	\$31,656.00	\$33,336.00
FTE CL	MAINT	\$44,846.04	\$47,114.04	\$48,170.04	\$48,650.04	\$49,118.00
FTE CL	CUSTODIAL		\$24,212.14	\$28,899.84	\$30,464.40	\$30,240.00
FTE CL	GROUNDNS		\$6,409.84	\$14,310.00	\$15,072.00	\$4,763.00
FTE CL	SECURITY		\$6,409.84	\$14,310.00	\$15,072.00	\$26,989.00
FTE CL AIDE	BIOLOGY		\$28,061.91	\$23,027.60	\$33,168.00	\$17,472.00
FTE CL AIDE	COMP SCI	\$33,372.00	\$34,029.99	\$35,865.00	\$49,708.75	\$48,768.00
FTE CL AIDE	PHYS SCI			\$0.00	\$0.00	\$17,472.00
HRLY CL	DEAN	\$2,989.54	\$0.00	\$159.40	\$0.00	\$0.00
HRLY CL	TUTORIAL	\$479.93	\$675.47	\$951.30	\$945.00	\$0.00
HRLY CL	B/S TUTORIAL		\$1,557.19			
HRLY CL	LIB	\$4,293.56	\$2,251.83	\$2,648.70	\$1,482.61	\$3,000.00
HRLY CL	A&R	\$2,798.70	\$4,600.18	\$5,859.65	\$3,407.81	\$2,394.00

	STU PERS						
HRLY CL	ADM	\$418.61					
HRLY CL	OTH STU SVC		\$258.40				
	MATR &						
HRLY CL	ASSESS	\$444.99	\$0.00	\$0.00	\$361.34	\$988.00	
HRLY CL	CUSTODIAL		\$3,088.42	\$7,021.21	\$0.00	\$4,500.00	
HRLY CL	GROUNDS	\$3,211.47	\$3,671.32	\$7,494.69	\$0.00	\$4,500.00	
HRLY CL	FSCL SVC	\$5,966.82	\$1,733.38	\$1,458.42	\$765.18	\$1,991.00	
HRLY CL	SECURITY	\$4,153.27	\$1,334.53	\$1,445.36	\$3,280.10	\$4,900.00	
PT CONT	TUTORIAL	\$10,365.00	\$10,825.27	\$11,692.50	\$15,220.00	\$15,242.00	
PT CONT	LIB	\$37,605.50	\$40,544.28	\$42,505.80	\$43,749.49	\$44,545.00	
PT CONT	MAINT	\$12,168.00	\$13,476.00	\$14,364.00	\$0.00	\$0.00	
PT CONT	CUSTODIAL		\$0.00	\$0.00	\$0.00	\$2,388.00	
PT CONT	GROUNDS		\$0.00	\$8,808.00	\$15,120.00	\$14,467.00	
PT CONT	SECURITY	\$7,458.00	\$8,256.00	\$8,808.00	\$8,892.00		
HRLY STU AST	DEAN	\$0.00	\$0.00	\$0.00	\$0.00	\$0.00	
HRLY STU AST	TUTORIAL	\$1,444.52	\$3,346.77	\$2,908.00	\$4,913.00	\$6,972.00	
1 x HRLY STU							
AST	TUTORIAL				\$2,141.00		
HRLY CL	BKST	\$0.00	\$0.00	\$0.00	\$0.00	\$0.00	
HRLY CL AIDE	COMP SCI	\$0.00	\$608.92	\$0.00	\$0.00	\$0.00	
HRLY CL AIDE	BIOLOGY	\$1,395.36	\$0.00	\$3,820.86	\$0.00	\$0.00	
PRNT CARD	VP INST	\$0.00	\$0.00	\$0.00	\$263.01	\$0.00	
PT CONT AIDE	COMP SCI	\$0.00	\$10,003.64	\$11,980.44	\$0.00	\$0.00	
GEN SPLY	CS COLL KID	\$0.00	\$0.00	\$3,936.15	\$69.25	\$250.00	
GEN SPLY	CS CLS/WKSH	\$0.00	\$0.00	\$0.00	\$0.00	\$50.00	
	CS SPORT						
GEN SPLY	CAMP	\$0.00	\$0.00	\$0.00	\$0.00	\$50.00	
IS SPLY	DEAN	\$0.00	\$0.00	\$0.00	\$0.00	\$2,000.00	
CONSULTANT	CS COLL KID	\$0.00	\$600.00	\$0.00	\$0.00	\$1,500.00	
CONSULTANT	CS CLS/WKSH	\$318.16	\$0.00	\$0.00	\$0.00	\$2,000.00	
	CS SPORT						
CONSULTANT	CAMP	\$0.00	\$0.00	\$0.00	\$180.00	\$3,000.00	
TRNG TRVL	CS COLL KID	\$0.00	\$0.00	\$0.00	\$47.70	\$150.00	
DUPL	CS COLL KID	\$0.00	\$250.00	\$0.00	\$0.00	\$250.00	

	CS SPORT					
DUPL	CAMP	\$0.00	\$0.00	\$0.00	\$0.00	\$150.00
ELECTRICITY	UTILITY	\$84,074.16	\$150,573.01	\$127,704.49	\$128,280.12	\$176,710.00
GAS	UTILITY	\$2,285.04	\$32,058.67	\$30,973.40	\$34,578.51	\$40,000.00
WATER	UTILITY	\$4,323.75	\$13,767.73	\$15,474.52	\$10,934.16	\$13,000.00
SEWAGE	UTILITY	\$2,227.44	\$2,459.30	\$3,134.25	\$2,696.58	\$6,000.00
REFUSE	UTILITY	\$3,885.73	\$6,219.81	\$6,697.53	\$7,231.87	\$9,000.00
TELEPHONE	UTILITY	\$1,941.22	\$3,471.90	\$2,128.12	\$1,997.79	\$5,000.00
LEASE FAC	ENGL	\$2,975.00	\$2,149.99	\$1,250.00	\$1,000.00	\$1,000.00
MAINT SVC	UTILITY	\$0.00	\$1,018.20	\$2,041.92	\$1,810.39	\$2,500.00
COMPUTER						
REPR	DEAN	\$0.00	\$0.00	\$0.00	\$0.00	\$495.00
UNALLOCATED	DEAN					\$7,000.00
REF BKS	DEAN	\$319.96	\$364.35	\$99.00	\$286.40	\$329.00
INST SPLY	BIOLOGY	\$3,285.00	\$14,365.00	\$15,645.17	\$7,174.27	\$12,750.00
INST SPLY	BUS	\$453.00	\$436.76	\$436.00	\$450.88	\$0.00
INST SPLY	COMP SCI	\$531.00	\$405.15	\$355.00	\$1,971.14	\$0.00
INST SPLY	ARTS	\$79.34	\$0.47	\$4,104.55	\$203.40	\$206.00
	CONSUMER					
INST SPLY	SCI	\$176.00	\$0.55	\$574.58	\$212.33	\$206.00
INST SPLY	ENGL	\$159.82	\$208.91	\$344.58	\$454.37	\$206.00
INST SPLY	PHIL	\$49.90	\$60.00	\$76.51	\$0.00	\$0.00
INST SPLY	MATH	\$198.36	\$196.63	\$123.14	\$0.00	\$206.00
INST SPLY	PHYS SCI	\$458.13	\$0.00	\$517.26	\$537.28	\$500.00
INST SPLY	CHEM	\$0.00	\$0.00	\$17,859.15	\$2,071.90	\$3,000.00
INST SPLY	LIB	\$113.58	\$513.48	\$645.13	\$138.75	\$400.00
AV SPLY	BUS	\$102.99	\$135.22	\$173.67	\$208.45	\$209.00
MATS	ARTS	\$0.00	\$1,093.63	\$752.07	\$575.34	\$0.00
	MATR &					
MATS	ASSESS	\$15.97	\$0.00	\$318.20	\$0.00	\$0.00
COIN/COPY						
MACH	LIBRARY	\$0.00	\$1,419.98	\$1,912.50	\$1,639.58	\$0.00
GEN SPLY	DEAN	\$3,192.00	\$6,276.73	\$9,833.43	\$7,743.48	\$5,578.00
1x Gen supply	DEAN				\$3,499.74	
	STU PERS					
GEN SPLY	ADM	\$1,848.65	\$2,767.17	\$3,031.45	\$2,051.48	\$2,136.00
MAINT SPLY	MAINT	\$2,674.55	\$4,055.45	\$6,633.95	\$5,172.14	\$10,000.00

1x MAINT SPLY	MAINT					\$4,966.70	
CUST SPLY	CUSTODIAL	\$2,683.74	\$7,740.14	\$10,756.44	\$7,587.43		\$9,800.00
1x CUST SPLY	CUSTODIAL				\$1,898.00		
GRND SPLY	GROUNDS	\$3,462.94	\$3,953.62	\$2,915.74	\$3,358.60		\$5,000.00
CHEMICAL	GROUNDS	\$0.00	\$0.00	\$282.02	\$268.31		\$1,138.00
1x CHEMICAL	GROUNDS	\$0.00		\$0.00	\$0.00		\$1,000.00
IRRIGATN	GROUNDS	\$96.93	\$281.17	\$982.39	\$288.08		\$1,000.00
CONF TRVL	DEAN	\$2,175.02	\$741.41	\$3,122.21	\$383.85		\$740.00
LOCAL TRVL	DEAN	\$7,955.64	\$8,413.71	\$11,301.31	\$2,802.44		\$6,598.00
FIELD TRIP	BIOLOGY	\$0.00	\$0.00	\$0.00	\$0.00		\$0.00
FIELD TRIP	PHYS SCI	\$0.00	\$0.00	\$0.00	\$0.00		\$0.00
MTG EXP	DEAN	\$516.24	\$791.31	\$447.24	\$259.70		\$303.00
POSTAGE	DEAN	\$1,011.00	\$53.67	\$193.03	\$190.09		\$200.00
ADVERTISE	INFO OFC	\$330.43	\$972.22	\$405.60	\$1,275.00		\$1,150.00
SUBSCRIPTION	LIB	\$751.00	\$1,176.00	\$1,893.30	\$762.60		\$1,287.00
DUPL	DEAN	\$3,205.62	\$2,995.32	\$5,248.52	\$2,612.81		\$4,980.00
1x DUPL	DEAN				\$2,000.00		
LAUNDRY	MAINT	\$208.14	\$204.65	\$224.50	\$245.19		\$311.00
MA COPIER	DEAN	\$1,639.99	\$1,940.00	\$1,077.50	\$1,522.50		\$1,640.00
MA ALARM	ALARM SYSTEMS	\$2,268.00	\$0.00	\$1,404.00	\$1,404.00		\$1,404.00
MA FIRE ALARM	ALARM SYSTEMS		\$0.00	\$444.00	\$444.00		\$444.00

MAINT SVC	LIB		\$0.00	\$0.00	\$1,188.00	\$0.00
MAINT SVC	MAINT	\$82.00	\$1,287.90	\$3,360.00	\$390.67	\$900.00
1x MAINT SVC	MAINT		\$0.00	\$0.00	\$0.00	\$10,000.00
MAINT SVC	CUSTODIAL	\$926.00	\$2,070.00	\$1,575.00	\$1,500.00	\$1,800.00
MAINT SVC	GROUNDS		\$3,500.00	\$8,550.00	\$0.00	\$0.00
LIVE SCAN	DEAN		\$396.00	\$208.00	\$57.00	\$260.00
MED EXAM	DEAN		\$345.00			
EQ REPR	BIOLOGY		\$0.00	\$0.00	\$269.03	\$750.00
1x EQ REPR	BIOLOGY				\$1,147.21	
EQ REPR	BUS	\$0.00	\$0.00	\$0.00	\$0.00	\$0.00
	CONSUMER					
EQ REPR	SCI	\$0.00	\$0.00	\$0.00	\$0.00	\$82.00
EQ REPR	MAINT	\$914.79	\$0.00	\$0.00	\$0.00	\$0.00
INST EQ	BIOLOGY		\$0.00	\$72,712.20	\$4,687.37	\$0.00
INST EQ	CHEM		\$0.00	\$9,906.65	\$0.00	\$0.00
EQUIP	DEAN	\$3,468.69	\$3,958.56	\$30,202.66	\$1,123.72	\$0.00
1x EQUIP	DEAN				\$3,505.52	
		\$1,118,121.55	\$1,586,517.87	\$1,851,626.08	\$1,776,197.58	\$1,953,240.00

### Achievement Monitoring Plan

The curriculum process for the Merced Community College District resides at the main campus and is the primary means by which student learning outcomes at the course and program level are determined. The Curriculum Committee is comprised primarily of faculty, with input from the Articulation/Matriculation Coordinator, Student Learning Outcomes Coordinator, Research Analyst, Vice President of Instruction, and Instructional Deans. While a discipline representative may come from the Los Banos Campus, the Los Banos Campus faculty have an additional position on the committee as a non-voting member. All courses are scrutinized for compliance with Title 5 regulations of the California Educational Code, Matriculation regulations, and articulation needs.

The course outline of record includes a description of the course, the student learning outcomes, the methods of instruction and evaluation, required textbooks, critical thinking assignments, assignments outside of class, and methods of evaluation. This process pertains to all courses offered.

## **E. Evidence of Necessary Internal and External Approvals**

### Evidence of Governing Board Action

As part of the curriculum process, the Merced College Board of Trustees approves all courses offered by the District including those offered at any locations.

Before a course is presented to the Board for approval it has been subjected to a rigorous approval process through the Curriculum Committee. Additionally, before reaching the Board, transfer courses are submitted through the articulation process for approval for IGETC (Intersegmental General Education Transfer Credit), CSU Breadth (California State University), and US-TCA (University of California Transfer Credit Approval).

The Merced College Board approved this Substantive Change Report at its August 2010 meeting (Attachment 8).

The original Los Banos Campus was approved as a college center by the Community College's Chancellor's Office on April 25, 1979. Documentation regarding the approval of the new Los Banos Campus dates back to 2001 and may be found in Attachment 9. The former Los Banos Campus was visited multiple times by accreditation teams during the six year accreditation visits, most recently in March, 2005. The team will be able to visit the campus during the next team visit in March, 2011.

## **F. Accreditation Eligibility Requirements**

Offering courses at various locations does not alter the College's ongoing ability to meet accreditation eligibility requirements in the following areas:

1. Authority Merced College is authorized or licensed to operate as an educational institution and to award degrees by an appropriate governmental organization or agency as required by each of the jurisdictions or regions in which it operates, reference California Code of Regulations, Title V, division 6. The offering of courses at multiple locations falls within this authority. The College is accredited by the Western Association of Schools and Colleges and is part of the California Community Colleges system.
2. Mission Merced College's educational mission is clearly defined, adopted, and published by its governing board consistent with its legal authorization, and is appropriate to a degree-granting institution of higher education and the constituency it seeks to serve. Serving students at multiple locations is consistent with the College's mission.

3. **Governing Board** Merced College has a functioning governing board responsible for the quality and integrity of the College and for ensuring that the College's mission is being carried out. Its membership is sufficient in size and composition to fulfill all board responsibilities. The governing board is an independent policy-making body capable of reflecting constituent and public interest in board activities and decisions. The Board supports offering classes at multiple locations. None of its board members has any employment, family, ownership, or other personal financial interest in Merced College.
  
4. **Chief Executive Officer** Merced College has a chief executive officer who is appointed by the governing board, and whose primary responsibility is to the College. The chief executive officer supports offering classes at multiple locations.
  
5. **Administrative Capacity** Merced College has sufficient staff, with appropriate preparation and experience to provide the administrative services necessary to support its mission and purpose. Classes offered at the Los Banos Campus are the same as those offered at all other locations under the Curriculum Committee with management representation and additional Los Banos faculty presence. The dean of the Los Banos Campus reports to the Vice President of Instruction.
  
6. **Operational Status** Merced College is operational, with students actively pursuing its degree programs. Courses offered at Los Banos are equivalent to existing courses and programs.
  
7. **Degrees** A substantial portion of Merced College's educational offerings are programs that lead to degrees, and a significant proportion of its students are enrolled in them. Courses offered at Los Banos are the same as those currently offered by the College at its main campus.
  
8. **Educational Programs** Merced College's principal degree programs are congruent with its mission, are based on recognized higher education field(s) of study, are of sufficient content and length, and are conducted at levels of quality and rigor appropriate to the degrees offered. A significant number of its degree programs are of two academic years in length. Courses offered at the Los Banos Campus are equivalent to those offered at the main campus and facilitate degree completion.

9. **Academic Credit** Merced College awards academic credits based on generally accepted practices in degree-granted institutions of higher education. Merced College is governed by the statutory and system regulatory requirements of the California Community College’s Chancellor’s Office. The College follows the Chancellor’s Office’s requirements for the awarding of academic credit. It provides appropriate information regarding the award of academic credit in its catalog. The award of credit is the same for courses offered at any College location. The Merced College administration is aware of the new accreditation requirement that institutions offering 50% or more of a degree completion at a location other than the main campus must notify the accrediting body.
10. **Student Learning and Achievement** Merced College defines and publishes for each program the program’s expected student learning and achievement outcomes. The student learning and achievement outcomes are the same for courses offered at any location and undergo regular and systematic assessment to insure that students who complete programs at any location achieve the stated student learning and achievement outcomes.

Below is a summary of the courses that have been offered at the Los Banos Campus. The acronym “CRR” stands for Course Retention Rate and the acronym “CSR” denotes Course Success Rate. Achievement in all areas is equivalent, or in some cases slightly higher, than the same courses at the Merced Campus.

#	DEPT	Course	Semesters Offered	CRR	CSR
1	Allied Health	67	F09-S10	94.1 2%	81.1 8%
2	Biology	6	S10	100. 00%	62.0 7%
		50	F09	100. 00%	61.9 0%
3	Business	34	S08, S09	96.1 5%	61.5 4%
		35	F05-S10, except summer	90.5 4%	72.9 7%
4	Child Development	1	F08-S10, except summer	91.9 6%	50.0 0%
		2	U08-S10	100. 00%	62.5 6%



		3	F08-S10, except summer	100.00%	84.00%
		5	F08-S10, except summer	95.45%	71.82%
		6	F09-S10	100.00%	76.25%
		7	F09-S10	100.00%	79.25%
		8	F07-S08	100.00%	70.21%
		9	S06, F06, S07, F08, S09-S10	99.21%	77.17%
		53	F07-S08	100.00%	73.77%
5	Family & Consumer Science	10	S04-S05, except summer	96.55%	76.55%
6	Communications	5	S07, S08-S10, except summer	99.36%	91.72%
7	Computer Science	1	F04-S10, except summer	100.00%	84.27%
		6*	S08-S10, except summer	100.00%	78.72%
		30	S06, F06-S09, F09-S10	100.00%	77.30%
8	Economics	1A	S07-S10, except summer	99.32%	68.03%
		1B	S08-S10, except summer	100.00%	73.83%
9	English	1A	S04, F04-S07, F07-S08, F08-S09, F09-S10	88.86%	64.46%
		1B	Springs 04-10, F05	96.15%	84.62%
		31	F09-S10	100.00%	80.85%
		41	S07-S09, except summer	100.00%	79.01%
		AL	F05-S10, except summer	89.71%	62.86%
10	Geography	1	S09-S10, except summer	100.00%	79.80%
		2	S10	100.00%	87.10%

1 1	Guidance	30	S08-S10	95.2 7%	68.7 3%
		48	S06-S10, except summer	87.6 3%	50.5 4%
		54	S08-S10	99.0 6%	78.7 7%
1 2	History	4A	F06-S10, except summer	98.0 0%	55.0 0%
		17A	S04-S10	97.5 8%	69.6 9%
		17B	S04-F04-S10	97.2 5%	78.5 9%
		29	F06-S10, except summer	98.4 5%	59.2 8%
		39A	S04, F04-S05, F05-S06, F07-S08	100. 00%	41.4 6%
		39B	S04, F04-S05, F05-S06, F07-S08	100. 00%	41.6 7%
		39C	S04, F04-S05, F05-S06, S08	100. 00%	34.7 8%
1 3	Humanities	2	S04	100. 00%	82.7 6%
1 4	Learning Resources	30	F06-S07, S08	87.5 0%	81.9 4%
1 5	Liberal Studies	10	F05-S06, F06-S07, F07-S08, S09, F09	97.8 0%	81.3 2%
		20	F06-S07, F07-S08, F09	100. 00%	92.8 6%
1 6	Mathematics	A	F07-S08, F08-S10	100. 00%	56.4 4%
		C	F07-S10	100. 00%	61.9 8%
1 7	Nutrition	10	U05-S10	96.0 9%	75.8 5%
1 8	Office Technology	53	F09-S10	100. 00%	55.1 7%
1 9	Physical Education	10F	F07-S10, except summer	100. 00%	93.0 1%
2 0	Psychology	1A	S04-S10, except summer	97.1 4%	74.6 7%
		9	S06, F06-S07, F08-S10	99.6 2%	84.9 1%
		36	F09	100.	82.5

				00%	0%
2 1	Registered Nurse	16	F07-S10, except summer	99.4 3%	98.2 8%
		26	F07-S10, except summer	100. 00%	98.6 0%
		36	F07-S10, except summer	100. 00%	100. 00%
		46	F07-S10, except summer	100. 00%	100. 00%
		50	F07-S08, F08-S09	100. 00%	82.8 7%
2 2 2	Spanish	4	S04, F04-S05, F05-S06, F06-S07, F07, S10	91.0 3%	61.5 4%
		35	F08-S09	100. 00%	41.6 7%
2 3	Tutorial	35	F06-S10, except summer	100. 00%	80.3 0%
<b>TOTAL</b>				<b>97.4 9%</b>	<b>75.0 1%</b>

\* Home department is mathematics

11. General Education Merced College defines and incorporates into all of its degree programs a substantial component of general education designed to ensure breadth of knowledge and promote intellectual inquiry. The general education component includes demonstrated competence in writing and computational skills and an introduction to some of the major areas of knowledge. Degree credit for general education programs is consistent with levels of quality and rigor appropriate to higher education. Courses offered at the Los Banos Campus fulfill this requirement.

12. Academic Freedom Merced College's faculty and students are free to examine and test all knowledge appropriate to their discipline or area of major study as judged by the academic/educational community in general. Merced College maintains an atmosphere in which intellectual freedom and independence exist. Academic Freedom applies to those involved in courses and programs at any location.

13. Faculty Merced College has a substantial core of qualified faculty with full-time responsibility to the College. The core is sufficient in size and experience to support all of the College’s educational programs. A clear statement of faculty responsibilities is provided to all faculty members. Faculty at the Los Banos Campus fall under the same requirements as those at the main campus.
14. Student Services Merced College provides for all of its students appropriate student services and development programs consistent with student characteristics and the College’s mission. Operating hours are almost identical. The College has online access to applications for admission, registration and financial aid. Merced College utilizes Accuplacer, an online student assessment product. Students must complete the assessment in a proctored environment. Locations for assessment include the Merced and Los Banos Campuses, and all area high schools. Prospective students from outside the district may provide alternative assessment documentation, including products approved by the California Community Colleges Chancellor’s Office. A list of available student services may be found above under Section D.
15. Admissions Merced College has adopted and adheres to admission policies consistent with its mission that specify the qualifications of students appropriate for its programs. Enrollment in education courses at Los Banos follows the same statutes and Board Policies as for the main campus.
16. Information and Learning Resources Merced College provides specific long-term access to sufficient information and learning resources and services to support its mission and all of its educational programs. Library resources are available at the Los Banos Campus during both the day and evening. Regular reference services are provided by librarians and there is audiovisual equipment in all classrooms.
17. Financial Resources Merced College possesses a funding base, financial resources, and plans for financial development adequate to support its mission and educational programs and to assure financial stability. The College has made a commitment to fund course offerings at multiple locations.
18. Financial Accountability Merced College regularly undergoes and makes available to the Chancellor’s Office and the public an external financial audit by certified public accountants. Merced College submits a copy of the current budget and a copy of the current audited financial statement prepared by an outside certified public accountant that has no other relationship to Merced College. The audit is certified and exceptions explained. The audit covers both the cost and income generated by Los Banos education courses.

19. Institutional Planning and Evaluation Merced College provides evidence of basic planning for the development of the College. The College has a planning process which identifies and integrates plans for academic personnel, learning resources, facilities, and financial development, as well as procedures for program review and institutional improvement. The needs of the Los Banos Campus are considered at all levels of planning and resource allocations.
- Merced College systematically evaluates and makes public how well and in what ways it is accomplishing its purposes, including assessment of student learning outcomes and documentation of institutional effectiveness. The offering of education courses at all locations is included in the College's Educational/Facilities Master Plan and courses are regularly evaluated.
20. Public Information Merced College publishes in its catalog (available in hard copy and online), and in other appropriate places, accurate and current information that describes its purposes and objectives; admission requirements and procedures; rules and regulations directly affecting students; programs, courses, degrees offered and degree requirements; costs and refund policies; complaint and grievance procedures; academic credentials of faculty and administrators; and other items related to attending or withdrawing from the College. The policies and procedures are the same for courses at all locations.
- Class schedules include specific sections dedicated to information regarding the Los Banos Campus. Other information about the Los Banos Campus may be found on the Merced College website ([www.mccd.edu](http://www.mccd.edu)).
21. Relations with the Accrediting Commission The governing board assures Merced College adheres to the eligibility requirements, accreditation standards and policies of the Commission. The College describes itself in identical terms to all its accrediting agencies, communicates any changes in its accredited status, and agrees to disclose information required by the Commission to carry out its accrediting responsibilities. The completion of this Substantive Change Proposal is in accordance with the College's commitment to the Commission.

## G. Accreditation Standards and Relevant Commission Policies

### Standard 1: Institutional Mission and Effectiveness

- Mission: The College has a mission and vision statement that includes a commitment to serving all students capable of benefiting from community college instruction, preparing students for transfer and training, and providing for cultural, educational, economic development and technological needs (Attachment 4). The mission statement is reviewed periodically using the College's shared governance processes.

- Improving Institutional Effectiveness: The College has a regular program review process in place for all instructional and student services programs, as well as an annual educational master plan process. In addition, the Merced Office of Institutional Research gathers and provides data for analysis on the success of all students, including those enrolled in courses at each location.

### Standard 2: Student Learning Programs and Services

- Instructional Programs: Program Review and Student Learning Outcomes Assessments are in place to systematically assess the currency of curriculum and teaching methodologies of both traditional and distance education courses.
- Curriculum: All education courses and programs are part of the College's approved curriculum and support general education and transfer and appropriate vocational education missions. Future curriculum will be designed and delivered by College faculty in accordance with curricular guidelines established by the College through its faculty senate.
- Student Support Services: The College recruits and admits diverse students who can benefit from Los Banos Campus course offerings. Among others, the Los Banos Campus offers services including enrollment, fee payment, counseling, disability accommodations, financial aid, bookstore, library, tutoring, assessment services, and financial aid.
- Library and Learning Support Services: The Los Banos Campus library houses print collections of 10,534 book titles and 23 magazine titles with small back files due to limited space. In 2008-2009, the Los Banos Campus library added 746 volumes. In addition to the print collections, the Los Banos Campus library houses and circulates a textbook reserve collection with a majority of the collection provided through a \$100,000 gift from Mrs. Jan Falasco. The Los Banos Campus Library offers access to all its materials available on the main campus through interlibrary loan. The college also participates in a regional interlibrary loan program that allows all Merced College access to a large number of volumes found at other colleges.

### Standard 3: Resources

- Human Resources: All full time and adjunct faculty teaching at any location meet state and district minimum qualifications to be eligible to teach in their disciplines. Faculty must follow the course outline of record insuring consistency among sections. All personnel are treated equitably, evaluated regularly and systematically and are provided with staff development opportunities.

- Physical and Technology Resources: Los Banos Campus reviews and identifies ongoing needs for physical and technical resources.
- Financial Resources: The College and District's financial planning and budget processes provide sufficient and stable support for the continuance of offerings at the Los Banos Campus. Processes allow for resources to grow as programs grow.

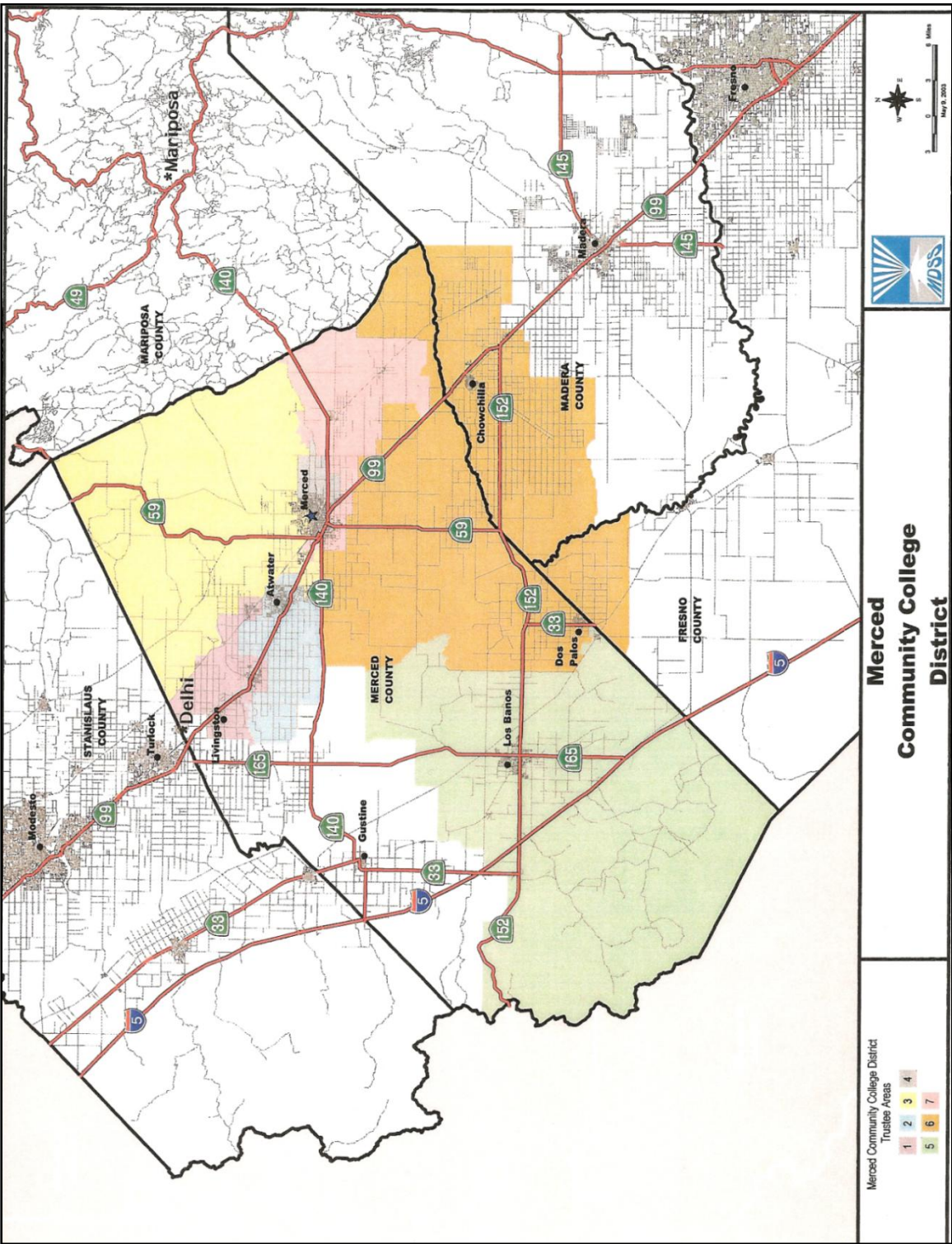
#### Standard 4: Leadership and Governance

- Decision-Making Roles and Processes: The Dean of the Los Banos Campus reports to the Vice-President of Instruction. The Los Banos Dean attends all management/leadership meetings as those on the main campus either in person or via Poly-Com distance meeting technology. The dean actively participates in the appropriate governance and operational committees and processes required to support the Los Banos Campus. Faculty leadership is provided through an elected faculty coordinator. Faculty members participate in such District committees such as the Academic Senate, the Educational Master Planning Committee, and other district wide groups. Classified employees participate in the Classified Senate, staff development activities, and other campus committees.
- Board and Administrative Organization: Courses/programs offered at the Los Banos Campus are within the required governing board policies and regulations.

## **Attachments**



**Attachment 1: Boundary Map**



**Attachment 2: Los Baños Campus Courses  
Spring 2010**

<b>MERCED COLLEGE</b>		<b>209.384.6000</b>
<b>LOS BAÑOS CLASSES</b>		
<b>LOS BAÑOS</b>	<b>Los Baños STUDENT SERVICES</b>	
	JANUARY 19, 2010 - MAY 28, 2010	
	Monday, Tuesday, Thursday, Friday	08:00a-04:30p
	Wednesday	08:00a-07:00p
	<b>SPRING 2010 EXCEPTIONS:</b>	
	<b>DECEMBER 30, 2009</b>	
	Wednesday	08:00a-04:30p
	<b>JANUARY 4-8, 2010</b>	
	Monday, Tuesday, Wednesday, Thursday	08:00a-07:00p
	Friday	08:00a-04:30p
<b>JANUARY 11-15, 2010</b>		
Monday, Tuesday, Wednesday	08:00a-07:00p	
<b>JANUARY 14, 2010</b>		
Saturday	10:00a-02:00p	
<b>JANUARY 19-22, 2010</b>		
Tuesday, Wednesday, Thursday	08:00a-07:00p	
Friday	08:00a-04:30p	
<b>APRIL 08, 2010</b>		
Thursday	CLOSED	
<b>LOS BAÑOS</b>	<b>Los Baños COUNSELING</b>	
	JANUARY 19, 2010 - MAY 28, 2010	
	Monday, Tuesday, Wednesday, Thursday	By Appointment
	Friday Drop-in	08:30a-12:30p
	<b>SPRING 2010 EXCEPTIONS:</b>	
	<b>JANUARY 4-8, 2010</b>	
	Monday, Tuesday, Wednesday, Thursday	09:00a-08:30p
	Friday	08:30a-12:30p
	<b>JANUARY 11-15, 2010</b>	
	Monday, Tuesday, Wednesday	09:00a-08:30p
<b>JANUARY 14, 2010</b>		
Saturday	10:00a-02:00p	
<b>JANUARY 19-22, 2010</b>		
Tuesday, Wednesday, Thursday	09:00a-08:30p	
Friday	08:30a-12:30p	
<b>APRIL 08, 2010</b>		
Thursday	CLOSED	
<b>LOS BAÑOS</b>	<b>Los Baños STUDENT FEES</b>	
	JANUARY 19, 2010 - MAY 28, 2010	
	Monday, Tuesday, Thursday, Friday	09:00a-03:00p
	Wednesday	09:00a-06:00p
	<b>SPRING 2010 EXCEPTIONS:</b>	
	<b>DECEMBER 30, 2009</b>	
	Wednesday	09:00a-03:00p
	<b>JANUARY 04-08, 2010</b>	
	Monday, Tuesday, Wednesday, Thursday	09:00a-06:00p
	Friday	09:00a-03:00p
<b>JANUARY 11-15, 2010</b>		
Monday, Tuesday, Wednesday	09:00a-06:00p	
<b>JANUARY 14, 2010</b>		
Saturday	10:00a-01:30p	
<b>JANUARY 19-22, 2010</b>		
Tuesday, Wednesday, Thursday	09:00a-06:00p	
Friday	09:00a-03:00p	
<b>APRIL 08, 2010</b>		
Thursday	08:00a-04:00p	
<b>LOS BAÑOS</b>	<b>ACCOUNTING (ACTG)</b>	
	<b>ACTG-04B MANAGERIAL ACCOUNTING</b>	
	4 units; 4 hours lecture.	
	Corequisite: ACTG-04A or ACTG-51. Advisory: MATH-A or MATH-B.	
	8005	TTh 05:30p-07:20p Sripes R LB-S-101
	<b>ADMINISTRATIVE OFFICE MANAGEMENT (AOM)</b>	
	<b>AOM-50B KEYBOARDING AND DOCUMENT FORMATTING</b>	
	3 units; 2 hours lecture, 3 hours lab.	
	Advisories: ENGL-81, ENGL-84.	
	8003	TTh 07:30p-09:45p Sripes R LB-A-119
<b>NURSE ASSISTANT ORIENTATIONS</b> Students must purchase a Merced College Nurse Assistant Program Handbook at the MC Bookstore Prior to orientation. The orientation will provide the necessary information needed to successfully complete the requirements prior to registration. Prospective students must attend an orientation before the beginning of a new class. The orientation sessions are open to the general public.		
<b>LOS BAÑOS CAMPUS</b> Orientations are held in LB A-105 and begin at 04:00p and last approximately 30-45 minutes. The dates are: October 7th, 2009 November 12th, 2009 December 9th, 2009		
<b>LOS BAÑOS</b>	<b>ALLIED HEALTH (ALLH)</b>	
	<b>ALLH-60 NURSE ASSISTANT</b>	
	5.5 units; 3 hours lecture, 7.5 hours lab.	
	Limitation on enrollment: Orientation workshop; CPR card - Module A/C; negative TB screening test within past 6 months or negative chest x-ray within past year; DOJ fingerprint clearance; Penal Code Violations clearance. Advisories: ENGL-80, ENGL-84.	
	8032	T 08:00p-08:50p Koch M LB-S-138
	Students enrolling in a Los Baños lecture section must enroll in the following lab:	
	4034	SAT 08:30a-03:10p Koch M LB-S-138
	Section 4034 includes a 1/2 hour lunch break.	
	<b>ALLH-67 MEDICAL TERMINOLOGY</b>	
	3 units; 3 hours lecture.	
Advisory: ENGL-A.		
8034	MW 07:00p-08:15p Sumett J LB-S-106	
<b>LOS BAÑOS</b>	<b>ART (ART)</b>	
	<b>ART-02 ART HISTORY – RENAISSANCE THROUGH MODERN</b>	
	(CSU breadth area C1) (IGETC area 3A)	
	3 units; 3 hours lecture.	
	Advisory: ENGL-01A.	
	4082	MW 11:00a-12:15p West J LB-S-107
	<b>ART-15 FUNDAMENTALS OF DESIGN IN ART</b>	
	(CSU breadth area C1)	
	3 units; 2 hours lecture, 3 hours lab.	
	Prerequisite/Advisory: None.	
4084	TTh 10:30a-12:45p Donovan M LB-S-101	
<b>72 • LOS BAÑOS CLASSES •</b>		

## Attachment 2: Los Banos Campus Courses Spring 2010

WWW.MCCD.EDU	SPRING 2010								
<p><b>ART-24A DRAWING I</b> (CSU Breadth Area C1) 3 units: 2 hours lecture, 3 hours lab. Prerequisite/Advisory: None.</p> <p>4088 TTh 01:00p-03:15p Donovan M LB-B-101 5088 TTh 05:30p-07:45p Caredio S LBHS</p> <p>Section 5088 is held at Los Baños High School( 1966 Ftat St.; Los Baños; Room 505.</p>	<p><b>BIOL-29 MICROBIOLOGY</b> (CSU breadth area B2/B3) (IGETC area 5B) 4 units: 2 hours lecture, 6 hours lab. Prerequisite: BIOL-01 or BIOL-02 or BIOL-04 or BIOL-04H. Advisories: Chem-02A; ENGL-A.</p> <p>4142 MW 10:00a-10:50a Latham E LB-B-104 Students enrolling in lecture section 4142 must enroll in the following lab: 4144 MW 11:00a-01:50p Latham E LB-B-104</p>								
<p><b>ART-24B DRAWING II</b> 3 units: 2 hours lecture, 3 hours lab. Prerequisite: ART-24A.</p> <p>4088 TTh 01:00p-03:15p Donovan M LB-B-101 5089 TTh 05:30p-07:45p Caredio S LBHS</p> <p>Section 5089 is held at Los Baños High School( 1966 Ftat St.; Los Baños; Room 505.</p>	<p style="text-align: center;"><b>BUSINESS (BUS)</b></p> <p><b>BUS-18A BUSINESS LAW</b> 4 units: 4 hours lecture. Advisories: BUS-10; ENGL-A, ENGL-22.</p> <p>8709 MW 07:00p-08:50p McMurray P LB-B-107</p>								
<p><b>ART-40A DIGITAL ART I: INTRODUCTION TO DIGITAL MEDIA</b> (CLC area A) 3 units: 2 hours lecture, 3 hours lab. Limitation on enrollment: Limited to the number of licenses available. Advisory: ENGL-A.</p> <p>4092 MW 01:00p-03:15p West J LB-A-119</p>	<p><b>BUS-35 MONEY MANAGEMENT</b> 3 units: 3 hours lecture. Advisories: CPSC-30; ENGL-A; MATH-80 or MATH-83.</p> <p>8820 MW 05:30p-08:45p McMurray P LB-B-107</p>								
<p style="text-align: center;"><b>BIOLOGY (BIOL)</b></p> <p><b>BIOL-01 GENERAL BIOLOGY FOR NON-MAJORS</b> (CSU breadth area B2/B3) (IGETC area 5B) 4 units: 3 hours lecture, 3 hours lab. Advisory: ENGL-A. Note: This course is not available to students having a grade of "C" or better in BIOL-04 or BIOL-04H.</p> <p>4132 TTh 12:30p-01:45p Coburn C LB-B-106 8132 MW 05:30p-08:45p Coburn C LB-B-102</p> <p>Students enrolling in a Los Baños lecture must enroll in one of the following Los Baños labs: 4134 T 02:00p-04:50p Coburn C LB-B-102 4138 Th 02:00p-04:50p Coburn C LB-B-102 8134 W 07:00p-09:50p Coburn C LB-B-102</p>	<p style="text-align: center;"><b>CHEMISTRY (CHEM)</b></p> <p><b>CHEM-02A INTRODUCTORY CHEMISTRY</b> (CSU breadth area B1/B3) (IGETC area 5A) 4 units: 3 hours lecture, 3 hours lab. Advisories: ENGL-A; MATH-A or MATH-B.</p> <p>4192 MWF 11:00a-11:50a Wilson D LB-B-106 Students enrolling in a Los Baños lecture must enroll in one of the following Los Baños labs: 4198 T 02:00p-04:50p Wilson D LB-B-106 4194 W 02:00p-04:50p Wilson D LB-B-106</p>								
<p><b>BIOL-02 HUMAN BIOLOGY</b> 4 units: 3 hours lecture, 3 hours lab. Limitation on enrollment: This course is not open to students having a C or better in BIOL-04 or BIOL-04H. Advisories: ENGL-A; LRNR-30.</p> <p>4168 MW 12:30p-01:45p Coburn C LB-B-102</p> <p>Students enrolling in a Los Baños lecture must enroll in the following lab: 4168 W 02:00p-04:50p Coburn C LB-B-102</p>	<p style="text-align: center;"><b>CHILD DEVELOPMENT (CLDV)</b></p> <p><b>CLDV-02 CHILD, FAMILY AND COMMUNITY</b> (CSU breadth area E) 3 units: 3 hours lecture. Advisory: ENGL-A.</p> <p>4222 MW 02:00p-03:15p Pernsey B LB-B-107</p>								
<p><b>BIOL-05 ENVIRONMENTAL SCIENCE</b> (CSU breadth area B2) (IGETC area 5B) 3 units: 3 hours lecture. Advisory: ENGL-A.</p> <p>2307 INTERNET Latham E ARR</p> <table border="1" style="width: 100%; border-collapse: collapse;"> <tr> <td style="width: 15%;"><b>CONTACT</b></td> <td>lathamr@mccd.edu, (209) 398-0729; Office LB-B-103, Los Baños Campus.</td> </tr> <tr> <td><b>COMMENTS</b></td> <td>All enrolled students must log on to the class using the Blackboard log-in page within the first 3 days of the class starting or may be dropped from the course. Instructor has office hours in Los Baños.</td> </tr> </table>	<b>CONTACT</b>	lathamr@mccd.edu, (209) 398-0729; Office LB-B-103, Los Baños Campus.	<b>COMMENTS</b>	All enrolled students must log on to the class using the Blackboard log-in page within the first 3 days of the class starting or may be dropped from the course. Instructor has office hours in Los Baños.	<p><b>CLDV-03 PRINCIPLES AND PRACTICES OF TEACHING YOUNG CHILDREN</b> 3 units: 3 hours lecture. One-way corequisite: CLDV-01. Advisory: ENGL-A.</p> <p>2358 INTERNET Pernsey B ARR</p> <table border="1" style="width: 100%; border-collapse: collapse;"> <tr> <td style="width: 15%;"><b>CONTACT</b></td> <td>perneysb@mccd.edu</td> </tr> <tr> <td><b>COMMENTS</b></td> <td>Instructor has office hours in Los Baños.</td> </tr> </table>	<b>CONTACT</b>	perneysb@mccd.edu	<b>COMMENTS</b>	Instructor has office hours in Los Baños.
<b>CONTACT</b>	lathamr@mccd.edu, (209) 398-0729; Office LB-B-103, Los Baños Campus.								
<b>COMMENTS</b>	All enrolled students must log on to the class using the Blackboard log-in page within the first 3 days of the class starting or may be dropped from the course. Instructor has office hours in Los Baños.								
<b>CONTACT</b>	perneysb@mccd.edu								
<b>COMMENTS</b>	Instructor has office hours in Los Baños.								
<p><b>BIOL-06 GENERAL HUMAN ANATOMY</b> (CSU breadth area B2/B3) (IGETC area 5B) 4 units: 2 hours lecture, 6 hours lab. Prerequisite: BIOL-01 or BIOL-02 or BIOL-50. Advisory: ENGL-A.</p> <p>4130 TTh 01:00p-01:50p Latham E LB-B-104</p> <p>Students enrolling in a Los Baños lecture section 4130 must enroll in the following lab: 4140 TTh 02:00p-04:50p Latham E LB-B-104</p>	<p><b>CLDV-07 INTRODUCTION TO CURRICULUM FOR THE YOUNG CHILD</b> 3 units: 3 hours lecture. One-way corequisite: CLDV-03. Advisory: ENGL-A.</p> <p>2383 INTERNET Pernsey B ARR</p> <table border="1" style="width: 100%; border-collapse: collapse;"> <tr> <td style="width: 15%;"><b>CONTACT</b></td> <td>perneysb@mccd.edu</td> </tr> <tr> <td><b>COMMENTS</b></td> <td>Instructor has office hours in Los Baños.</td> </tr> </table>	<b>CONTACT</b>	perneysb@mccd.edu	<b>COMMENTS</b>	Instructor has office hours in Los Baños.				
<b>CONTACT</b>	perneysb@mccd.edu								
<b>COMMENTS</b>	Instructor has office hours in Los Baños.								
<p><b>BIOL-07 GENERAL HUMAN ANATOMY</b> (CSU breadth area B2/B3) (IGETC area 5B) 4 units: 2 hours lecture, 6 hours lab. Prerequisite: BIOL-01 or BIOL-02 or BIOL-50. Advisory: ENGL-A.</p> <p>4130 TTh 01:00p-01:50p Latham E LB-B-104</p> <p>Students enrolling in a Los Baños lecture section 4130 must enroll in the following lab: 4140 TTh 02:00p-04:50p Latham E LB-B-104</p>	<p><b>CLDV-07L PRACTICUM</b> 3 units: 1 hour lecture, 6 hours lab. Limitation on enrollment: Students must provide proof of a negative result on a communicable tuberculosis examination with four years of the end date of this course. Prerequisite: CLDV-04. Advisory: ENGL-A.</p> <p>4228 TW 08:30a-11:50a Pernsey B LB-B-138</p>								
<p>• LOS BAÑOS CLASSES • 73</p>									



**Attachment 2: Los Banos Campus Courses  
Spring 2010**

<b>MERCED COLLEGE</b>		<b>209.384.6000</b>	
<b>LOS BAÑOS</b>	<b>CLDV-11 INTRODUCTION TO EARLY INTERVENTION</b> 3 units: 2 hours lecture, 3 hours lab. Limitation on enrollment: Students must have a negative result on a TB test within the past four years. Prerequisites: CLDV-01, CLDV-03. Advisory: ENGL-A.	8362	TTh 05:30p-08:45p Vera P LB-S-102
	<b>CLDV-38 CHILDREN WITH SPECIAL NEEDS</b> 3 units: 3 hours lecture. Advisories: CLDV-01; ENGL-A.	8144	M 05:30p-08:20p Penney B LB-S-136
	<b>COMMUNICATION STUDIES (COMM)</b>		
	<b>COMM-01 FUNDAMENTALS OF SPEECH</b> (IGETC area 1C) (CSU breadth area A1) 3 units: 3 hours lecture. Prerequisite: ENGL-A.	4242	TTh 02:00p-03:15p Howard C LB-S-112
	<b>COMM-05 INTERPERSONAL COMMUNICATION</b> (CSU breadth area A1) 3 units: 3 hours lecture. Prerequisite: ENGL-A.	4244	TTh 10:30a-11:45a Howard C LB-S-111
		8242	TTh 05:30p-08:45p Howard C LB-S-136
	<b>COMPUTER STUDIES (CPSC)</b>		
	<b>CPSC-30 COMPUTER APPLICATIONS</b> (CILC areas A,B,C,D,E,F) 3 units: 2 hours lecture, 3 hours lab. Advisories: ACM-50A or ACM-50B (keyboard at a minimum of 20 GWAM); ENGL-81, ENGL-84; MATH-80 or MATH-83.	4370	MW 08:00a-10:15a Farmer V LB-A-108
		4372	TTh 10:30a-12:45p Langley S LB-A-109
		4254	TTh 01:00p-03:15p Langley S LB-A-108
	4252	F 09:00a-01:50p Farmer V LB-A-108	
	8252	MW 05:30p-07:45p Robinson D LB-A-108	
<b>COOPERATIVE EDUCATION (COOP)</b> Students enroll in Cooperative Education by meeting with a counselor in Student Services located in Building A. Call (209) 828-3486 or (209) 828-8432 for more information.			
<b>COOP-41A COOPERATIVE EDUCATION IN (SUBJECT)</b> 1-4 units: 1-4 hours weekly. Advisory: ENGL-A. Cooperative work experience education is a process of education that combines work experience with regular college instruction as an integral part of the community college curriculum.			
<b>COOP-41BCD COOPERATIVE EDUCATION IN (SUBJECT)</b> 1-4 units: 1-4 hours weekly. Prerequisite: COOP-41A. Advisory: ENGL-A. See COOP-41A above.			
<b>CRIMINAL JUSTICE (CRIM)</b>			
<b>CRIM-08 INTRODUCTION TO EVIDENCE</b> 3 units: 3 hours lecture. One-way corequisite: CRIM-01 or CRIM-02. Advisory: ENGL-A.	8255	W 07:00p-09:50p Reed C LB-A-103	
<b>DRAMA (DRAM)</b>			
<b>DRAM-01 INTRODUCTION TO THEATER</b> (CSU breadth area C1/C2) (IGETC area 3B) 3 units: 3 hours lecture. Advisory: ENGL-A.	8277	T 07:00p-09:50p Staff LB-A-103	
<b>ECONOMICS (ECON)</b>			
<b>ECON-01A INTRODUCTION TO MACROECONOMICS</b> (CSU breadth area D2) (IGETC area 4B) 3 units: 3 hours lecture. Advisories: ENGL-A; MATH-A.	8312	Th 05:30p-08:20p McNally T LB-A-103	
<b>ENGLISH (ENGL)</b>			
<b>ENGL-A FOUNDATIONS IN ACADEMIC LITERACY</b> (CILC area G) 4 units: 4 hours lecture. Prerequisites: ENGL-81, ENGL-84. Two-way corequisite: ENGL-AL. Students enrolling in a Los Baños Campus lecture must enroll in a Los Baños Campus lab.	4346	MW 08:00a-09:50a Serinagaba A LB-S-134	
	4348	MW 12:00p-01:50p Serinagaba A LB-S-134	
	4349	TTh 08:00a-09:50a Zabalbeascoa J LB-S-138	
	4347	TTh 03:30p-05:20p Toconis M LB-S-135	
	8346	MW 08:30p-08:20p Baker W LB-S-134	
<b>ENGL-AL Academic Literacy LAB</b> 1 unit: 3 hours lab. Two-way corequisite: ENGL-A. Advisory: ACM-50A. Students enrolling in a Los Baños Campus lab must enroll in a Los Baños Campus lecture.	4350	MW 10:00a-11:15a Serinagaba A LB-A-109	
	4352	MW 02:00p-03:15p Serinagaba A LB-A-109	
	4354	TTh 11:00a-12:15p Zabalbeascoa J LB-A-110	
	4356	TTh 02:00p-03:15p Zabalbeascoa J LB-A-110	
	8351	MW 08:30p-09:45p Baker W LB-A-109	
	8350	TTh 05:30p-08:45p Toconis M LB-A-109	
<b>ENGL-01A COLLEGE COMPOSITION AND READING</b> (CSU breadth area A2) (IGETC area 1A) (CILC area G) 4 units: 4 hours lecture. Prerequisite: ENGL-A. Advisory: LRNR-30.	4360	MW 02:00p-03:50p McCandless M LB-S-135	
	4368	MW 04:30p-08:20p Staff LB-S-134	
	4362	TTh 12:00p-01:50p McCandless M LB-S-134	
	8360	TTh 07:30p-09:20p Serinagaba A LB-S-134	
	9921	MTWTh 10:00a-11:50a McCandless M LB-S-134	
		Section 9921 is held from 01/19/10 to 03/18/10.	
<b>ENGL-13 CRITICAL REASONING AND WRITING (Also: PHIL-13)</b> (CSU breadth area A3) (IGETC area 1B) (CILC area G) 3 units: 3 hours lecture. Prerequisite: ENGL-01A.	9966	MTW 10:00a-11:50a McCandless M LB-S-134	
		Section 9966 is held from 03/22/10 to 05/26/10.	
<b>ENGL-80 BASIC READING TACTICS I</b> 3 units: 3 hours lecture. Prerequisites: ENGL-80 or ESL-91. Two-way corequisite: ENGL-80L.	4392	TTh 11:00a-12:15p Withers M LB-S-138	
	8374	TTh 05:30p-08:45p Cabea K LB-S-134	
<b>ENGL-80L READING TACTICS LABORATORY</b> 1 unit: 3 hours lab. Prerequisites: ENGL-80 or ESL-91. Two-way corequisite: ENGL-80. Advisory: Concurrent enrollment in ENGL-81.	4396	MW 12:30p-01:45p Withers M LB-A-110	
	4397	MW 02:00p-03:15p Kinobe S LB-A-110	
	4391	MW 04:00p-05:15p Baker W LB-A-110	
	4389	TTh 08:00a-09:15a Spevak J LB-A-110	
	4395	TTh 09:30a-10:45a Spevak J LB-A-110	
	4394	TTh 12:30p-01:45p Withers M LB-A-110	
	4393	TTh 04:00p-05:15p Cabea K LB-A-110	
	8501	MW 07:00p-08:15p Flanagan J LB-A-110	
	8502	TTh 07:00p-08:15p Cabea K LB-A-110	

**Attachment 2: Los Banos Campus Courses  
Spring 2010**

WWW.MCCD.EDU				SPRING 2010					
<b>ENGL-81 BASIC READING TACTICS II</b>				<b>GUID-48A CAREER SELF-ASSESSMENT</b>					
3 units; 3 hours lecture. Prerequisite: ENGL-80, 80L. Two-way corequisite: ENGL-81L. Advisory: Concurrent enrollment in ENGL-84.				1 unit; 1 hour lecture. Advisory: ENGL-A.					
4398	MWF	09:00a-09:50a	Withers M	LB-S-138	9905	TTh	11:00a-12:15p	Enos K	LB-S-106
4400	MWF	11:00a-11:50a	Withers M	LB-S-138	Section 9905 is held from 01/19/10 to 02/25/10.				
4401	TTh	02:00p-03:15p	Tocoris M	LB-S-135	<b>GUID-48B CAREER RESEARCH</b>				
8390	MW	05:30p-05:45p	Flanagan J	LB-S-135	1 unit; 1 hour lecture. Advisory: ENGL-A.				
<b>ENGL-81L READING TACTICS LABORATORY</b>				<b>GUID-48C EMPLOYMENT SEARCH AND READINESS SKILLS</b>					
1 unit; 3 hours lab. Prerequisite: ENGL-80, ENGL-80L. Two-way corequisite: ENGL-81. Advisory: Concurrent enrollment in ENGL-84.				1 unit; 1 hour lecture. Advisory: ENGL-A.					
4402	MW	12:30p-01:45p	Withers M	LB-A-110	9910	TTh	11:00a-12:15p	Enos K	LB-S-106
4403	MW	02:00p-03:15p	Kimoto S	LB-A-110	Section 9910 is held from 04/20/10 to 05/27/10.				
4405	MW	04:00p-05:15p	Baker W	LB-A-110	<b>GUID-84 FOUNDATIONS AND STRATEGIES FOR ACADEMIC RECOVERY</b>				
4407	TTh	06:00a-08:15a	Sprvak J	LB-A-110	3 units; 3 hours lecture. Advisories: ENGL-81, ENGL-81L, ENGL-84.				
4408	TTh	09:30a-10:45a	Sprvak J	LB-A-110	4480	TTh	12:30p-01:45p	Hogue S	LB-S-138
4409	TTh	12:30p-01:45p	Withers M	LB-A-110	<b>GUID-70B EOPS STRATEGIES FOR SUCCESS</b>				
4411	TTh	04:00p-05:15p	Carla K	LB-A-110	0.5 units; 9 hours total lecture. Advisories: ENGL-81, ENGL-84.				
8503	MW	07:00p-08:15p	Flanagan J	LB-A-110	9945	T	01:00p-01:50p	Rodriguez L	LB-S-135
8504	TTh	07:00p-08:15p	Carla K	LB-A-110	Section 9945 is held from 01/19/10 to 03/16/10.				
<b>ENGL-83 BASIC WRITING I - SENTENCE TO PARAGRAPH</b>				<b>GUID-80 COLLEGE SURVIVAL</b>					
5 units; 5 hours lecture. Prerequisite: ENGL-80 or ESL-84. Advisories: Concurrent enrollment in ENGL-80, ENGL-80L; concurrent enrollment in ESL-85 is also recommended for non-native speakers.				1 unit; 1 hour lecture. Advisories: ENGL-80, ENGL-83.					
4406	DAILY	09:00a-09:50a	Kimoto S	LB-S-135	4482	T	11:00p-11:50p	Hogue S	LB-S-135
<b>ENGL-84 BASIC WRITING SKILLS II - PARAGRAPH TO ESSAY</b>				<b>HEALTH (HLTH)</b>					
5 units; 5 hours lecture. Prerequisite: ENGL-83. Advisory: Concurrent enrollment in ENGL-81.				<b>HLTH-10 CONTEMPORARY HEALTH</b>					
4410	DAILY	10:00a-10:50a	Kimoto S	LB-S-135	(CSU breadth area E)				
4416	MTWTh	02:00p-03:05p	Withers M	LB-S-138	3 units; 3 hours lecture. Advisory: ENGL-A.				
8400	TTh	05:30p-07:45p	McHaily P	LB-S-135	8498	MW	05:30p-06:45p	Burnett J	LB-S-106
<b>ENGL-80 BASIC LANGUAGE AND LEARNING SKILLS</b>				<b>HISTORY (HIST)</b>					
4 units; 4 hours lecture. Prerequisite/Advisory: None.				<b>HIST-04A HISTORY OF CIVILIZATION: PART I</b>					
4416	MTWTh	12:00p-12:50p	Kimoto S	LB-S-135	(CSU breadth area C2D6) (IGETC area 3B)				
<b>GEOGRAPHY (GEOG)</b>				3 units; 3 hours lecture. Advisory: ENGL-A.					
<b>GEOG-01 PHYSICAL GEOGRAPHY</b>				4481					
(CSU breadth area B1) (IGETC area 5A)				TTh					
3 units; 3 hours lecture. Advisory: ENGL-A.				11:00a-12:15p					
8454	W	07:00p-09:50p	Bloom K	LB-S-138	Slack K				
<b>GEOG-02 WORLD GEOGRAPHY</b>				LB-S-107					
(CSU breadth area D5) (IGETC area 4E)				<b>HIST-17A UNITED STATES HISTORY AND UNITED STATES CONSTITUTION</b>					
3 units; 3 hours lecture. Advisory: ENGL-A.				(CSU breadth area C2D6) (IGETC area 3B4F)					
8452	T	07:00p-09:50p	Gaugler C	LB-S-138	3 units; 3 hours lecture. Advisories: ENGL-01A.				
<b>GUIDANCE (GUID)</b>				4498					
<b>GUID-30 FOUNDATIONS AND STRATEGIES FOR COLLEGE SUCCESS</b>				MW					
(CSU breadth area E)				09:30a-10:45a					
3 units; 3 hours lecture. Advisory: ENGL-A.				Yahya M					
4478	TTh	09:30a-10:45a	Enos K	LB-S-106	9931				
<b>GUIDANCE (GUID)</b>				MW					
<b>GUID-30 FOUNDATIONS AND STRATEGIES FOR COLLEGE SUCCESS</b>				02:00p-04:50p					
(CSU breadth area E)				Slack K					
3 units; 3 hours lecture. Advisory: ENGL-A.				LB-S-107					
4478	TTh	09:30a-10:45a	Enos K	LB-S-106	Section 9931 is held from 01/20/10 to 03/17/10.				
<b>GUIDANCE (GUID)</b>				<b>HIST-17B UNITED STATES HISTORY AND CALIFORNIA STATE AND LOCAL GOVERNMENT</b>					
<b>GUID-30 FOUNDATIONS AND STRATEGIES FOR COLLEGE SUCCESS</b>				(CSU breadth area C2D6) (IGETC area 3B4F)					
(CSU breadth area E)				3 units; 3 hours lecture. Advisories: ENGL-01A.					
3 units; 3 hours lecture. Advisory: ENGL-A.				4498					
4478	TTh	09:30a-10:45a	Enos K	LB-S-106	TTh				
<b>GUIDANCE (GUID)</b>				02:00p-03:15p					
<b>GUID-30 FOUNDATIONS AND STRATEGIES FOR COLLEGE SUCCESS</b>				Slack K					
(CSU breadth area E)				LB-S-107					
3 units; 3 hours lecture. Advisory: ENGL-A.				9932					
4478	TTh	09:30a-10:45a	Enos K	LB-S-106	MW				
<b>GUIDANCE (GUID)</b>				02:00p-04:50p					
<b>GUID-30 FOUNDATIONS AND STRATEGIES FOR COLLEGE SUCCESS</b>				Slack K					
(CSU breadth area E)				LB-S-107					
3 units; 3 hours lecture. Advisory: ENGL-A.				Section 9932 is held from 03/22/10 to 05/26/10.					

**Attachment 2: Los Banos Campus Courses  
Spring 2010**

MERCED COLLEGE		209.384.6000		
<b>LOS BAÑOS</b>	<b>MATHEMATICS (MATH)</b>			
	<b>MATH-A BEGINNING ALGEBRA</b>			
	4 units: 4 hours lecture.			
	Prerequisite: MATH-80 or MATH-83. Advisory: ENGL-A.			
	4578	MTWTh	08:00a-08:50a	Schlinger C LB-B-110
	Section 4578 requires purchase of new text or extra software to complete online work. Contact instructor for more details.			
	8578	MW	05:30p-07:20p	Winburn J LB-B-110
	9949	MTWTh	10:00a-11:50a	Schlinger C LB-B-110
	Section 9949 is held from 03/22/10 to 05/27/10.			
	Section 9949 requires purchase of new text or extra software to complete online work. Contact instructor for more details.			
	9948	MTWTh	12:00p-01:50p	Bryan J LB-B-110
	Section 9948 is held from 01/19/10 to 03/18/10.			
	Section 9948 requires purchase of new text or extra software to complete online work. Contact instructor for more details.			
	<b>MATH-C INTERMEDIATE ALGEBRA</b>			
	4 units: 4 hours lecture.			
Prerequisite: MATH-A or MATH-B. Advisory: ENGL-A.				
4580	MTWTh	09:00a-09:50a	Cuarenta Gallegos G LB-B-110	
4581	MTWTh	02:00p-02:50p	Schlinger C LB-B-110	
8580	TTh	07:30p-09:20p	Bhaskar H LB-B-110	
9982	MTWTh	12:00p-01:50p	Bryan J LB-B-110	
Section 9982 is held from 03/22/10 to 05/27/10.				
Section 9982 requires purchase of new text or extra software to complete online work. Contact instructor for more details.				
<b>MATH-10 ELEMENTARY STATISTICS</b>				
(CSU breadth area B4) (IGETC area 2)				
3 units: 3 hours lecture.				
Prerequisite: MATH-C. Advisory: ENGL-A.				
4584	TTh	12:30p-01:45p	Cuarenta Gallegos G LB-B-110	
<b>MATH-15 FINITE MATHEMATICS</b>				
(CSU breadth area B4) (IGETC area 2)				
3 units: 3 hours lecture.				
Prerequisite: MATH-C. Advisory: ENGL-A.				
4583	MWF	09:00a-09:50a	Bryan J LB-B-108	
<b>MATH-20B BASIC STRUCTURE OF MATHEMATICS II</b>				
(CSU breadth area B4)				
3 units: 3 hours lecture.				
Prerequisite: MATH-C. Advisories: ENGL-A; MATH-20A.				
8419	TTh	05:30p-06:45p	Staff LB-B-110	
<b>MATH-88ABC (1-2) LABORATORY EXPERIENCE IN MATHEMATICS (NON-TRANSFER LEVEL)</b>				
1 unit: 3 hours lab.				
Prerequisite: MATH-80. One-way corequisite: MATH-A, MATH-B, MATH-C, or MATH-D.				
This course provides individualized instruction and technology-based instruction to augment courses in beginning or intermediate algebra. Each letter (i.e., ABC) may be taken only once.				
<b>MATH-88A2 (1.0 unit)</b>				
4588	MW	03:30p-04:45p	Winburn J LB-B-111	
<b>MATH-88B2 (1.0 unit)</b>				
4589	MW	03:30p-04:45p	Winburn J LB-B-111	
<b>MATH-80 PREALGEBRA</b>				
4 units: 4 hours lecture.				
Prerequisite: MATH-81. Advisories: ENGL-81, ENGL-81L.				
4602	MTWTh	10:00a-10:50a	Cuarenta Gallegos G LB-B-112	
4604	MTWTh	02:00p-02:50p	Cuarenta Gallegos G LB-B-111	
8604	TTh	05:30p-07:20p	Robinson D LB-B-111	
9941	MTWTh	10:00a-11:50a	Schlinger C LB-B-110	
Section 9941 is held from 01/19/10 to 03/18/10.				
9947	MTWTh	12:00p-01:50p	Wilson D LB-B-111	
Section 9947 is held from 03/22/10 to 05/27/10.				
<b>MATH-80AB MATH LABORATORY</b>				
.5 - 1 unit: 1.5 - 3 hours lab.				
Advisory: MATH-80. (Note: The letter designation indicates unit value, "A" being for 0.5 unit, "B" for 1 unit, etc., in 0.5 unit increments.)				
<b>MATH-80A (.50 unit)</b>				
4805	M	03:30p-04:45p	Winburn J LB-B-111	
<b>MATH-80B (1.0 unit)</b>				
4805	MW	03:30p-04:45p	Winburn J LB-B-111	
<b>MATH-80 FUNDAMENTALS OF ARITHMETIC</b>				
3 units: 3 hours lecture.				
Advisory: ENGL-80.				
4816	MWF	10:00a-10:50a	Bryan J LB-B-111	
<b>MATH-81 FUNDAMENTALS OF DECIMALS AND FRACTIONS</b>				
3 units: 3 hours lecture.				
Prerequisite: MATH-80. Advisories: ENGL-80, ENGL-80L.				
4820	MWF	09:00a-09:50a	Latham E LB-B-111	
8805	MW	05:30p-06:45p	Albertson I LB-B-111	
9933	MTWTh	12:30p-01:45p	Wilson D LB-B-111	
Section 9933 is held from 01/19/10 to 03/18/10.				
<b>MUSIC (MUS)</b>				
<b>MUS-14 HISTORY OF AMERICAN POPULAR MUSIC</b>				
(CSU breadth area C1) (IGETC area 3A)				
3 units: 3 hours lecture.				
Advisory: ENGL-A.				
8825	M	07:00p-09:50p	Faria M LB-A-108	
<b>MUS-27A PIANO I</b>				
2 units: 2 hours lecture.				
Advisory: ENGL-A.				
8825	T	07:00p-08:50p	Faria M LBHS	
Section 8825 is held at Los Banos High School, 1988 11st St Los Banos, Room 505.				
<b>NUTRITION (NUTR)</b>				
<b>NUTR-10 NUTRITION</b>				
(CSU breadth area E)				
3 units: 3 hours lecture.				
Advisory: ENGL-A.				
4840	F	09:00a-11:50a	Caudle N LB-B-110	
<b>PHILOSOPHY (PHIL)</b>				
<b>PHIL-10 CRITICAL THINKING</b>				
(CSU breadth area A3) (CILC area G)				
3 units: 3 hours lecture.				
Prerequisites: ENGL-A. Advisories: ENGL-01A.				
9940	TTh	07:00p-09:50p	Catrina D LB-B-108	
Section 9940 is held from 01/19/10 to 03/18/10.				
<b>PHIL-13 CRITICAL REASONING AND WRITING (Also: ENGL-13)</b>				
(CSU breadth area A3) (IGETC area 1B) (CILC area G)				
3 units: 3 hours lecture.				
Prerequisite: ENGL-01A.				
9945	MTW	10:00a-11:50a	McCandless M LB-B-134	
Section 9945 is held from 03/22/10 to 05/26/10.				



## Attachment 2: Los Banos Campus Courses Spring 2010

WWW.MCCD.EDU	SPRING 2010
<b>PHYSICAL EDUCATION (PHED)</b>	
<b>PHED-10D WEIGHT TRAINING</b>	
1 unit; 3 hours lab. Advisory: Good general health; absence of medical conditions that would prevent planned physical activity.	
Phed-10D (1 unit)	
8656	TTh 06:00p-07:15p Toocano D LBHS
Section 8656 is held at Los Baños High School, 1986 Tlat St, Los Baños, Room 505.	
<b>PHED-10E FITNESS THROUGH ACTIVITY</b>	
1 unit; 3 hours lab. Advisory: Good general health; absence of medical conditions that would prevent planned physical activity.	
PHED-10E Pilates/Yoga (1 unit)	
4658	MWF 12:00p-12:50p Mendes D LBPC
Section 4658 is held at Positive changes, 1005 6th Street, Los Baños.	
PHED-10E Yoga (1 unit)	
4641	TTh 12:30p-01:45p Mendes D LB-A-103
PHED-10E Body Shaping (1 unit)	
4660	TTh 04:30p-05:45p Gomes A LBREC
Section 4660 is held at Los Baños Recreation Hall in College Greens Park, located on Scripps and College Greens Drive, Los Baños.	
<b>PHED-10H WALKING FOR CARDIOVASCULAR CONDITIONING AND FLEXIBILITY</b>	
1 unit; 3 hours lab. Advisory: Good general health; absence of medical conditions that would prevent planned physical activity.	
4658	TTh 06:00a-09:15a Gomes A LB-B-112
Section 4658 will meet for an orientation on January 19th, 2010. All other class sessions will be held off campus at Oliveira Park, corner of Orégala and Cardaza, Los Baños.	
<b>PHED-15 ADAPTED PHYSICAL EDUCATION</b>	
1 unit; 3 hours lab. Advisory: Good general health; absence of medical conditions that would prevent planned physical activity. Advise that student provide medical verification of disability and recommendation of medical intervention.	
4662	MWF 10:00a-10:50a Mendes D MCART
Section 4662 is held at McArthur Apartments, 1130 F Street, Los Baños.	
<b>PHYSICAL SCIENCE (PHSC)</b>	
<b>PHSC-01 INTRODUCTION TO PHYSICAL AND EARTH SCIENCE</b>	
(CSU breadth area B1) (IGETC area 5A)	
3 units; 3 hours lecture. Advisories: ENGL-A; MATH-A or MATH-B.	
4672	MWF 10:00a-10:50a Wilson D LB-B-108
8670	TTh 05:30p-08:45p Wilson D LB-B-108
<b>PHSC-01L INTRODUCTION TO PHYSICAL AND EARTH SCIENCE LABORATORY</b>	
(CSU breadth area B3) (IGETC area 5A)	
1 unit; 3 hours lab. One-way corequisite: PHSC-01. Advisories: ENGL-A; MATH-A or MATH-B.	
4674	M 02:00p-04:50p Wilson D LB-B-102
<b>POLITICAL SCIENCE (POSC)</b>	
<b>POSC-01 ESSENTIALS OF THE AMERICAN POLITICAL SYSTEM</b>	
(CSU breadth area D6) (IGETC area 4H)	
3 units; 3 hours lecture. Advisory: ENGL-A.	
4698	MW 05:00a-09:15a Yahya M LB-B-107
8698	TTh 05:30p-08:45p Slack K LB-B-107
<b>PSYCHOLOGY (PSYC)</b>	
<b>PSYC-01A INTRODUCTION TO PSYCHOLOGY</b>	
(CSU breadth area D9) (IGETC area 4I) (CILC area E)	
3 units; 3 hours lecture. Advisory: ENGL-A.	
9902	TTh 07:00p-09:50p Staff LB-B-107
Section 9902 is held from 01/19/10 to 03/18/10.	
<b>PSYC-01B INTRODUCTION TO PSYCHOLOGICAL METHODS</b>	
(CILC area E)	
3 units; 3 hours lecture. Prerequisite: PSYC-01A or PSYC-01AH.	
9901	TTh 07:00p-09:50p Staff LB-B-107
Section 9901 is held from 03/23/10 to 05/27/10.	
<b>PSYC-23 PERSONAL AND SOCIAL ADJUSTMENT</b>	
(CSU breadth area D9E) (IGETC area 4I)	
3 units; 3 hours lecture. Advisory: ENGL-A.	
4702	TTh 09:30a-10:45a Hogue S LB-B-107
<b>SOCIOLOGY (SOC)</b>	
<b>SOC-01 INTRODUCTION TO SOCIOLOGY</b>	
(CSU breadth area D0) (IGETC area 4J)	
3 units; 3 hours lecture. Advisories: ENGL-01A.	
4732	MW 12:30p-01:45p Staff LB-B-107
<b>SPANISH (SPAN)</b>	
<b>SPAN-01 ELEMENTARY SPANISH</b>	
(CSU breadth area C2) (IGETC area 6)	
5 units; 5 hours lecture. Advisory: ENGL-5A.	
4745	TTh 11:00a-01:15p Cortes S LB-B-112
8745	MW 05:30p-07:45p Wynne C LB-B-112
<b>SPAN-02 ELEMENTARY SPANISH</b>	
(CSU breadth area C2) (IGETC area 3B/5)	
5 units; 5 hours lecture. Prerequisite: SPAN-01 or two years of high school Spanish.	
8745	TTh 05:30p-07:45p Wynne C LB-B-112

**Attachment 2: Los Banos Campus Courses  
Summer 2010**

<h1>SUMMER 2010 CLASSES</h1>				
<b>ACCOUNTING (ACTG)</b>				
<b>ACTG-04A FINANCIAL ACCOUNTING</b>				
4 units: 72 total hours lecture. Advisories: ACTG-51; ENGL-A; MATH-91.				
<b>MERCED</b>				
6060	MTWTh	05:30p-08:20p	Kingsley J	VOC-139
<b>ACTG-51 APPLIED ACCOUNTING</b>				
4 units: 72 total hours lecture. Advisories: ENGL-81; MATH-90.				
<b>MERCED</b>				
1243	MTWTh	02:00p-04:50p	Stapleton I	VOC-37
<p align="center"><b>NURSE ASSISTANT ORIENTATIONS</b></p> <p>Students must purchase a Merced College Nurse Assistant Program Handbook at the MC Bookstore Prior to orientation. The orientation will provide the necessary information needed to successfully complete the requirements prior to registration. Prospective students must attend an orientation before the beginning of a new class. The orientation sessions are open to the general public.</p> <p align="center"><b>MERCED CAMPUS</b></p> <p>Orientalions are held in AHC-157 and begin at 04:00p and last approximately 30-45 minutes. The dates are April 13, 20, 27, 2010 May 4, 2010</p> <p align="center"><b>LOS BAÑOS CAMPUS</b></p> <p>Orientalions are held in LB A-105 and begin at 04:00p and last approximately 30-45 minutes. The dates are: April 14, 2010 April 28, 2010 May 12, 2010 May 26, 2010 June 9, 2010</p>				
<b>ALLIED HEALTH (ALLH)</b>				
<b>ALLH-60 NURSE ASSISTANT</b>				
5.5 units: 54 total hours lecture, 135 total hours lab. Limitation on enrollment: Orientation workshop; CPR card - Module A/C; negative TB screening test within past 6 months or negative chest x-ray within past year; DOJ fingerprint clearance; Penal Code Violations clearance. Advisories: ENGL-80, ENGL-84.				
<b>MERCED</b>				
9055	M	08:00a-03:00p	Reid E	AHC-129
Section 9055 is held from 06/07/10 to 08/02/10. Section 9055 includes a 35 minute lunch break.				
Students enrolling in a Merced lecture section must enroll in one of the following lab:				
9057	TW	06:30a-02:15p	Mattmiller C	HOSP
Section 9057 is held from 06/08/10 to 08/04/10. Section 9057 includes a 30 minute lunch break.				
9056	TW	07:30a-03:15p	Reid E	HOSP
Section 9056 is held from 06/08/10 to 08/04/10. Section 9056 includes a 30 minute lunch break.				
<b>LOS BAÑOS</b>				
4005	M	04:00p-09:50p	Koch M	LB-B-138
Section 4005 is held from 06/07/10 to 08/02/10.				
Students enrolling in a Los Baños lecture section must enroll in one of the following labs:				
4007	WS	07:00a-02:45p	Koch M	LB-B-138
Section 4007 is held from 06/08/10 to 08/07/10. Section 4007 includes a 30 minute lunch break.				
<b>ALLH-67 MEDICAL TERMINOLOGY</b>				
3 units: 54 total hours lecture. Advisory: ENGL-A.				
<b>MERCED</b>				
6039	MTW	05:30p-08:20p	Gilbert C	AHC-130
<b>ANTHROPOLOGY (ANTH)</b>				
<b>ANTH-02 CULTURAL ANTHROPOLOGY</b>				
(CSU breadth area D1) (IGETC area 4A) 3 units: 54 total hours lecture. Advisories: ENGL-A.				
<b>MERCED</b>				
1050	MTWTh	12:30p-02:35p	Gaugler C	IAC-110
<b>ART (ART)</b>				
<b>ART-01 ART HISTORY -- ANCIENT THROUGH GOTHIC</b>				
(CSU breadth area C1) (IGETC area 3A) 3 units: 54 total hours lecture. Advisory: ENGL-01A.				
<b>MERCED</b>				
6055	MTWTh	05:30p-07:35p	Benhlissen L	ART-1
<b>ART-02 ART HISTORY -- RENAISSANCE THROUGH MODERN</b>				
(CSU breadth area C1) (IGETC area 3A) 3 units: 54 total hours lecture. Advisory: ENGL-01A.				
<b>MERCED</b>				
1019	MTWTh	02:45p-04:50p	Benhlissen L	ART-1
<b>ART-15 FUNDAMENTALS OF DESIGN IN ART</b>				
(CSU breadth area C1) 3 units: 36 total hours lecture, 54 total hours lab. Advisory: ENGL-01A.				
<b>LOS BAÑOS</b>				
4082	MTWTh	01:00p-04:35p	Donovan M	LB-B-101
<b>ART-24A DRAWING I</b>				
(CSU Breadth Area C1) 3 units: 36 total hours lecture, 54 total hours lab. Prerequisite/Advisory: None.				
<b>MERCED</b>				
1007	MTWTh	08:00a-11:35a	Kirksey R	ART-6
<b>LOS BAÑOS</b>				
4010	MTWTh	09:00a-12:35p	Donovan M	LB-B-101
8082	MTWTh	05:30p-09:05p	Wheldon S	LB-B-101

**SUMMER CLASSES**



## Attachment 2: Los Banos Campus Courses Summer 2010

MERCED COLLEGE				209.384.6000
SUMMER CLASSES	<b>ART-24B DRAWING II</b>			
	3 units: 36 total hours lecture, 54 total hours lab. Prerequisite: ART-24A.			
	<b>MERCED</b>			
	1008	MTWTh	08:00a-11:35a	Kirksey R ART-6
	<b>LOS BAÑOS</b>			
	4017	MTWTh	09:00a-12:35p	Donovan M LB-B-101
	8084	MTWTh	05:30p-09:05p	Wheldon S LB-B-101
	<b>ART-25A ACRYLIC PAINTING I</b>			
	3 units: 36 total hours lecture, 54 total hours lab. Prerequisite/Advisory: None.			
	<b>MERCED</b>			
1002	MTWTh	11:45a-03:20p	Kirksey R ART-6	
<b>ART-25B ACRYLIC PAINTING II</b>				
3 units: 36 total hours lecture, 54 total hours lab. Prerequisite: ART-25A.				
<b>MERCED</b>				
1005	MTWTh	11:45a-03:20p	Kirksey R ART-6	
<b>ART-25C ACRYLIC PAINTING III</b>				
3 units: 36 total hours lecture, 54 total hours lab. Prerequisite: ART-25B.				
<b>MERCED</b>				
1006	MTWTh	11:45a-03:20p	Kirksey R ART-6	
<b>ART-25D ACRYLIC PAINTING IV</b>				
3 units: 36 total hours lecture, 54 total hours lab. Prerequisite: ART-25C.				
<b>MERCED</b>				
1013	MTWTh	11:45a-03:20p	Kirksey R ART-6	
<b>ART-28A OIL PAINTING I</b>				
3 units: 36 total hours lecture, 54 total hours lab. Prerequisite/Advisory: None.				
<b>MERCED</b>				
1015	MTWTh	11:45a-03:20p	Kirksey R ART-6	
<b>ART-28B OIL PAINTING II</b>				
3 units: 36 total hours lecture, 54 total hours lab. Prerequisite: ART-28A.				
<b>MERCED</b>				
1016	MTWTh	11:45a-03:20p	Kirksey R ART-6	
<b>ART-28C OIL PAINTING III</b>				
3 units: 36 total hours lecture, 54 total hours lab. Prerequisite: ART-28B.				
<b>MERCED</b>				
1017	MTWTh	11:45a-03:20p	Kirksey R ART-6	
<b>ART-28D OIL PAINTING IV</b>				
3 units: 36 total hours lecture, 54 total hours lab. Prerequisite: ART-28C.				
<b>MERCED</b>				
1018	MTWTh	11:45a-03:20p	Kirksey R ART-6	
<b>ART-29A WATERCOLOR PAINTING I</b>				
3 units: 36 total hours lecture, 54 total hours lab. Prerequisite/Advisory: None.				
<b>MERCED</b>				
1254	MTWTh	11:45a-03:20p	Kirksey R ART-6	
<b>ART-29B WATERCOLOR PAINTING II</b>				
3 units: 36 total hours lecture, 54 total hours lab. Prerequisite: ART-29A.				
<b>MERCED</b>				
1068	MTWTh	11:45a-03:20p	Kirksey R ART-6	
<b>ART-29C WATERCOLOR PAINTING III</b>				
3 units: 36 total hours lecture, 54 total hours lab. Prerequisite: ART-29B.				
<b>MERCED</b>				
1069	MTWTh	11:45a-03:20p	Kirksey R ART-6	
<b>ART-29D WATERCOLOR PAINTING IV</b>				
3 units: 36 total hours lecture, 54 total hours lab. Prerequisite: ART-29C.				
<b>MERCED</b>				
1070	MTWTh	11:45a-03:20p	Kirksey R ART-6	
<b>ART-48 A-ZZ ADVANCED SPECIAL PROBLEMS IN ART</b>				
3 units: 36 total hours lecture, 54 total hours lab. Limitation on enrollment: Before enrolling, the student must complete a contract detailing proposed area of study. Completed contract requires signatures: a) the instructor of the course section the student will be attending; b) the Arts Division Chairperson. This course is designed to provide students with the opportunity to do				
<b>BIOLOGY (BIOL)</b>				
<b>BIOL-01 GENERAL BIOLOGY FOR NON-MAJORS</b>				
(CSU breadth area B2/B3) (IGETC area 5B) 4 units: 54 total hours lecture, 54 total hours lab. Advisory: ENGL-A. Note: This course is not available to students having a grade of "C" or better in BIOL-04A or BIOL-04AH.				
<b>MERCED</b>				
1580	MTWTh	10:15a-12:20p	Goodfellow K (lec)	SCI-111
	& MTWTh	08:00a-10:05a	Goodfellow K (lab)	SCI-112
1581	MTWTh	10:15a-12:20p	Goodfellow K (lec)	SCI-111
	& MTWTh	12:30p-02:35p	Goodfellow K (lab)	SCI-112
1582	MTWTh	10:15a-12:20p	Goodfellow K (lec)	SCI-111
	& MTWTh	02:45p-04:50p	Goodfellow K (lab)	SCI-112
<b>LOS BAÑOS</b>				
4030	MTW	11:00a-01:50p	Coburn C (lec)	LB-B-106
	& MTW	02:00p-04:50p	Coburn C (lab)	LB-B-102
4033	MTW	11:00a-01:50p	Coburn C (lec)	LB-B-106
	& MTW	02:00p-04:50p	Staff (lab)	LB-B-104
<b>BIOL-16 GENERAL HUMAN ANATOMY</b>				
(CSU breadth area B2/B3) (IGETC area 5B) 4 units: 36 total hours lecture, 108 total hours lab. Prerequisite: BIOL-01 or BIOL-02 or BIOL-50. Advisory: ENGL-A.				
<b>MERCED</b>				
1609	MTWTh	12:45p-02:00p	Estrella C (lec)	SCI-203
	& MTWTh	08:00a-12:15p	Estrella C (lab)	SCI-116
1584	MTWTh	12:45p-02:00p	Estrella C (lec)	SCI-203
	& MTWTh	02:15p-08:30p	Estrella C (lab)	SCI-116
<b>BIOL-18 PRINCIPLES OF PHYSIOLOGY</b>				
(CSU breadth area B2/B3) (IGETC area 5B) 4 units: 54 total hours lecture, 54 total hours lab. Prerequisites: BIOL-01 or BIOL-02 or BIOL-16, CHEM-02A. Advisory: ENGL-A.				
<b>MERCED</b>				
1902	MTWTh	10:15a-12:20p	Bettis C (lec)	SCI-208
	& MTWTh	08:00a-10:05a	Bettis C (lab)	SCI-113
1903	MTWTh	10:15a-12:20p	Staff (lec)	SCI-208
	& MTWTh	12:30p-02:35p	Staff (lab)	SCI-113

## Attachment 2: Los Banos Campus Courses Summer 2010

WWW.MCCD.EDU				SUMMER 2010				
<b>BIOL-20 MICROBIOLOGY</b> (CSU breadth area B2/B3) (IGETC area 5B) 4 units: 36 total hours lecture, 108 total hours lab. Prerequisite: BIOL-01 or BIOL-02 or BIOL-04A or BIOL-04AH. Advisories: Chem-02A; ENGL-A.				<b>COMM-05 INTERPERSONAL COMMUNICATION</b> (CSU breadth area A1) 3 units: 3 hours lecture. Prerequisite: ENGL-A.				
<b>MERCED</b>				<b>MERCED</b>				
1615	MTWTh	12:45p-02:00p & MTWTh 08:00a-12:15p	Macias M (lec) Macias M (lab)	SCI-208 SCI-114	9048	MTWTh 08:00a-12:35p	Young J Section 9048 is held from 06/21/10 to 07/08/10.	VOC-141
1585 MTWTh 12:45p-02:00p & MTWTh 02:15p-06:30p Macias M (lec) Bryan H (lab) SCI-208 SCI-114				<b>COMPUTER STUDIES (CPSC)</b>				
<b>BIOL-50 SURVEY OF ANATOMY AND PHYSIOLOGY</b> 3 units: 54 total hours lecture. Advisory: ENGL-A.				<b>CPSC-30 COMPUTER APPLICATIONS</b> (CILC areas A,B,C,D,E,F) 3 units: 36 total hours lecture, 54 total hours lab. Advisories: ACM-50A or ACM-50B (keyboard at a minimum of 20 GWPM); ENGL-81, ENGL-84; MATH-80.				
<b>MERCED</b>				<b>MERCED</b>				
1001 TWTTh 11:00a-01:50p Richmond J AHC-129				1031 MTWTh 11:45a-03:20p Kelahuna P VOC-115				
<b>BUSINESS (BUS)</b>				1040 MTWTh 08:00a-11:35a Ahmadi A VOC-115				
<b>BUS-10 INTRODUCTION TO BUSINESS</b> 3 units: 54 total hours lecture. Advisory: ENGL-A.				<b>LOS BAÑOS</b>				
<b>MERCED</b>				<b>CPSC-31A BEGINNING WORD PROCESSING</b> (CILC areas A,B,C,D) 1 unit: 18 total hours lecture. Advisories: ACM-50B or type at least 25 WPM; ENGL-A.				
9059 TWTTh 05:30p-08:20p Stocks M VOC-141				<b>MERCED</b>				
<b>BUS-45VO VIRTUAL OFFICE</b> 2 units: 36 hours total lecture. Advisory: ENGL-A.				1513 MW 09:30a-10:50a Haugen A VOC-114				
<b>MERCED</b>				<b>ECONOMICS (ECON)</b>				
1281 TTh 11:00a-01:50p Reintke T VOC-114				<b>ECON-01A INTRODUCTION TO MACROECONOMICS</b> (CSU breadth area D2) (IGETC area 4B) 3 units: 54 total hours lecture. Advisories: ENGL-A; MATH-A.				
<b>CHEMISTRY (CHEM)</b>				<b>MERCED</b>				
<b>CHEM-02A INTRODUCTORY CHEMISTRY</b> (CSU breadth area B1/B3) (IGETC area 5A) 4 units: 54 total hours lecture, 54 total hours lab. Advisories: ENGL-A; MATH-A or MATH-B.				1233 MTWTh 10:15a-12:20p Kingsley J VOC-9				
<b>MERCED</b>				<b>ENGLISH (ENGL)</b>				
1010 MTWTh 10:15a-12:20p Staff (lec) SCI-110				<b>ENGL-A FOUNDATIONS IN ACADEMIC LITERACY</b> (CILC area G) 4 units: 72 total hours lecture. Prerequisites: ENGL-81, ENGL-84. Two-way corequisite: ENGL-AL.				
& MTWTh 08:00a-10:05a Staff (lab) SCI-109				<b>MERCED</b>				
1011 MTWTh 10:15a-12:20p Staff (lec) SCI-110				Students enrolling in a Merced Campus lecture must enroll in a Merced Campus lab.				
& MTWTh 12:30p-02:35p Staff (lab) SCI-109				1021 MTWTh 08:00a-10:50a Long J IAC-120				
9008 MTWTh 05:30p-07:35p Cool S (lec) SCI-110				1022 MTWTh 11:00a-01:50p Doell E IAC-120				
& MTWTh 02:45p-04:50p Cool S (lab) SCI-109				1083 MTWTh 08:00a-10:50a Rocha M VOC-138				
9009 MTWTh 05:30p-07:35p Cool S (lec) SCI-110				<b>LOS BAÑOS</b>				
& MTWTh 07:45p-09:50p Cool S (lab) SCI-109				Students enrolling in a Los Baños Campus lecture must enroll in a Los Baños Campus lab.				
<b>CHILD DEVELOPMENT (CLDV)</b>				4053 MTWTh 11:00a-01:50p Baker W LB-B-134				
<b>CLDV-05 HUMAN DEVELOPMENT (ALSO: PSYC-09)</b> (CSU breadth area E) 3 units: 54 total hours lecture. Advisory: ENGL-A.				<b>ENGL-AL ACADEMIC LITERACY LAB</b> 1 unit: 54 total hours lab. Two-way corequisite: ENGL-A. Advisory: ACM-50A.				
2415 ONLINE Roduner S				<b>MERCED</b>				
<b>CONTACT</b> <a href="http://www.mccd.edu/myhelp/">www.mccd.edu/myhelp/</a>				Students enrolling in a Merced Campus lab must enroll in a Merced Campus lecture.				
<b>MERCED</b>				<b>MERCED</b>				
1048 MTW 11:00a-01:50p Williamson L VOC-112				1024 MTWTh 08:00a-10:05a Doell E IAC-140				
<b>COMMUNICATION STUDIES (COMM)</b>				1023 MTWTh 12:30p-02:35p Smith V IAC-140				
<b>COMM-01 FUNDAMENTALS OF SPEECH</b> (IGETC area 1C) (CSU breadth area A1) 3 units: 54 total hours lecture. Prerequisite: ENGL-A.				1084 MTWTh 12:30p-02:35p Long J IAC-139				
<b>MERCED</b>				<b>LOS BAÑOS</b>				
9053 MTWTh 08:00a-12:35p Bonstein J IAC-123				Students enrolling in a Los Baños Campus lab must enroll in a Los Baños Campus lecture.				
Section 9053 is held from 06/21/10 to 07/08/10.				4055 MTWTh 02:45p-04:50p Baker W LB-A-110				
<b>5</b>								

**SUMMER CLASSES**

## Attachment 2: Los Banos Campus Courses Summer 2010

<b>MERCED COLLEGE</b>		<b>209.384.6000</b>		
SUMMER CLASSES	<b>ENGL-01A COLLEGE COMPOSITION AND READING</b>			<b>ENGL-84 BASIC WRITING SKILLS II - PARAGRAPH TO ESSAY</b>
	(CSU breadth area A2) (IGETC area 1A) [CILC area G] 4 units: 72 total hours lecture. Prerequisite: ENGL-A. Advisory: LRNR-30.			5 units: 90 total hours lecture. Prerequisite: ENGL-83. Advisory: Concurrent enrollment in ENGL-81.
	<b>MERCED</b>			<b>MERCED</b>
	1025	MTWTh	08:00a-10:50a	Toonits M IAC-122
	1026	MTWTh	11:00a-01:50p	Bowers B IAC-122
	1259	MTWTh	02:00p-04:50p	Chao Y IAC-122
	8014	TWTh	05:30p-09:20p	Temple J IAC-122
	<b>LOS BAÑOS</b>			
	4050	TWTh	08:00a-11:50a	Wilson J LB-B-138
	<b>ENGL-01B INTRODUCTION TO LITERATURE</b>			<b>GEOGRAPHY (GEOG)</b>
(CSU breadth area C2) (IGETC area 3B) 3 units: 54 total hours lecture. Prerequisite: ENGL-01A.			<b>GEOG-01 PHYSICAL GEOGRAPHY</b> (CSU breadth area B1) (IGETC area 5A) 3 units: 54 total hours lecture. Advisory: ENGL-A.	
<b>MERCED</b>			<b>LOS BAÑOS</b>	
8033	TTh	05:30p-09:45p	Hundley A IAC-123	
<b>ENGL-13 CRITICAL REASONING AND WRITING (ALSO: PHIL-13)</b>			<b>GUIDANCE (GUID)</b>	
(CSU breadth area A3) (IGETC area 1B) [CILC area G] 3 units: 54 total hours lecture. Prerequisite: ENGL-01A.			<b>GUID-30 FOUNDATIONS AND STRATEGIES FOR COLLEGE SUCCESS</b> (CSU breadth area E) 3 units: 54 total hours lecture. Advisory: ENGL-A; Compose essays at the ENGL-01A entrance level; Apply reading strategies and critical reading and thinking skills at ENGL-01A entrance level.	
<b>MERCED</b>			<b>2418 ONLINE McMillan W</b>	
8034	TWTh	05:30p-08:20p	Kahler S IAC-120	
<b>ENGL-80 BASIC READING TACTICS I</b>			<b>CONTACT</b> <a href="mailto:mcmillan.w@mccd.edu">mcmillan.w@mccd.edu</a>	
3 units: 54 total hours lecture. Prerequisite: ENGL-80 or ESL-81. Two-way corequisite: ENGL-80L.			<b>COMMENTS</b> Contact instructor prior to the course start date.	
<b>MERCED</b>			<b>ENGL-84 FOUNDATIONS AND STRATEGIES FOR ACADEMIC RECOVERY</b>	
8021	TWTh	05:30p-08:20p	Huntington P ART-2	
<b>ENGL-80L READING TACTICS LABORATORY</b>			3 units: 54 total hours lecture. Advisories: ENGL-81, ENGL-81L, ENGL-84.	
1 unit: 54 total hours lab. Prerequisite: ENGL-80 or ESL-81. Two-way corequisite: ENGL-80. Advisory: Concurrent enrollment in ENGL-83.			<b>2419 ONLINE Solo G</b>	
<b>MERCED</b>			<b>CONTACT</b> <a href="mailto:solo.g@mccd.edu">solo.g@mccd.edu</a> or (209) 384-8218	
1258	TWTh	02:00p-04:50p	Huntington P IAC-139	
<b>ENGL-81 BASIC READING TACTICS II</b>			<b>COMMENTS</b> Registered students must contact instructor prior to June 21, 2010.	
3 units: 54 total hours lecture. Prerequisite: ENGL-80, 80L. Two-way corequisite: ENGL-81L. Advisory: Concurrent enrollment in ENGL-84.			<b>MERCED</b>	
<b>MERCED</b>			1044 MTWTh 08:00a-10:05a Maples Williams I VOC-10	
1033	MTWTh	10:15a-12:20p	Camp K IAC-121	
1256	MTWTh	12:30p-02:35p	Gonzalez H IAC-121	
<b>LOS BAÑOS</b>			<b>HEALTH (HLTH)</b>	
4402	MTWTh	08:00a-10:05a	Wilbers M LB-B-135	
<b>ENGL-81L READING TACTICS LABORATORY</b>			<b>HLTH-10 CONTEMPORARY HEALTH</b> (CSU breadth area E) 3 units: 54 total hours lecture. Advisory: ENGL-A.	
1 unit: 54 total hours lab. Prerequisite: ENGL-80, ENGL-80L. Two-way corequisite: ENGL-81. Advisory: Concurrent enrollment in ENGL-84.			<b>MERCED</b>	
<b>MERCED</b>			1049 MTWTh 08:00a-10:05a Huddleston A GYM-2	
1034	MTWTh	10:15a-12:20p	Gonzalez H IAC-139	
1239	MTWTh	12:30p-02:35p	Ortiz K IAC-139	
<b>LOS BAÑOS</b>			1053 MTWTh 10:15a-12:20p Severo S GYM-2	
4404	TWTh	10:30a-01:20p	Kimoto S LB-A-110	
<b>ENGL-83 BASIC WRITING I - SENTENCE TO PARAGRAPH</b>			1054 TTh 08:00a-12:15p Casey R AG-11	
5 units: 90 total hours lecture. Prerequisite: ENGL-80 or ESL-84. Advisories: Concurrent enrollment in ENGL-80, ENGL-80L; concurrent enrollment in ESL-85 is also recommended for non-native speakers.			<b>HISTORY (HIST)</b>	
<b>MERCED</b>			<b>HIST-17A UNITED STATES HISTORY AND UNITED STATES CONSTITUTION</b> (CSU breadth area C2/D6) (IGETC area 3B/4F) 3 units: 54 total hours lecture. Advisories: ENGL-01A.	
1036	MTWTh	08:00a-11:35a	Thatcher K ART-2	
<b>ENGL-84 FOUNDATIONS AND STRATEGIES FOR ACADEMIC RECOVERY</b>			<b>2405 ONLINE Harvey E</b>	
3 units: 54 total hours lecture. Advisories: ENGL-81, ENGL-81L, ENGL-84.			<b>CONTACT</b> <a href="mailto:harvey.e@mccd.edu">harvey.e@mccd.edu</a>	
<b>MERCED</b>			<b>MERCED</b>	
1043	MTWTh	08:00a-10:05a	Koolas T VOC-8	
8024	TWTh	05:30p-08:20p	Purcell C VOC-8	
<b>LOS BAÑOS</b>			4070 TWTh 02:00p-04:50p Staff LB-B-107	



## Attachment 2: Los Banos Campus Courses Summer 2010

WWW.MCCD.EDU		SUMMER 2010																	
<b>HIST-17B UNITED STATES HISTORY AND CALIFORNIA STATE AND LOCAL GOVERNMENT</b> (CSU breadth area C2/D6) (IGETC area 3B4F) 3 units: 54 total hours lecture. Advisories: ENGL-01A.																			
2406	ONLINE	Steeley J																	
<table border="1" style="width: 100%; border-collapse: collapse;"> <tr> <td style="width: 15%;">CONTACT</td> <td colspan="3">www.mccd.edu/faculty/steeleyj</td> </tr> </table>				CONTACT	www.mccd.edu/faculty/steeleyj														
CONTACT	www.mccd.edu/faculty/steeleyj																		
<b>MERCED</b> 1511 MTWTh 08:00a-10:05a Cowell D AHC-123 1560 MTWTh 10:15a-12:20p Lorenz M AHC-123																			
<b>LEARNING RESOURCES (LRNR)</b> <b>LRNR-30 INFORMATION COMPETENCY IN THE ELECTRONIC AGE</b> (CILC areas A,B,C,D,E,F,G) 3 units: 3 hours lecture. Prerequisite: ENGL-A. Advisories: ACM-50B, keyboard at a minimum rate of 25 wpm at 95% accuracy.																			
1027	MTWTh	08:00a-10:05a	Ryan A IAC-124																
<b>MATHEMATICS (MATH)</b> <b>MATH-A BEGINNING ALGEBRA</b> 4 units: 72 total hours lecture. Prerequisite: MATH-80. Advisory: ENGL-A.																			
2410	HYBRID	Meidinger S																	
<table border="1" style="width: 100%; border-collapse: collapse;"> <tr> <td style="width: 15%;">CONTACT</td> <td colspan="3">meidinger.s@mccd.edu or www.mccd.edu/faculty/stevemf</td> </tr> <tr> <td style="width: 15%;">ORIENTATION</td> <td colspan="3">MANDATORY - June 21, 2010; 08:00p-04:50p; SCI-204</td> </tr> <tr> <td style="width: 15%;">IN-CLASS SESSION</td> <td colspan="3">MID-TERM - July 8, 2010; 03:00p-04:50p; SCI-204 FINAL EXAM - July 29, 2010; 03:00p-04:50p; SCI-204</td> </tr> <tr> <td style="width: 15%;">COMMENTS</td> <td colspan="3">More information will be sent to your Merced College e-mail account prior to orientation. Section 2410 requires online homework. The homework access code is included with purchase of a new text from the college bookstore or purchased separately from the publisher's web site for \$72.</td> </tr> </table>				CONTACT	meidinger.s@mccd.edu or www.mccd.edu/faculty/stevemf			ORIENTATION	MANDATORY - June 21, 2010; 08:00p-04:50p; SCI-204			IN-CLASS SESSION	MID-TERM - July 8, 2010; 03:00p-04:50p; SCI-204 FINAL EXAM - July 29, 2010; 03:00p-04:50p; SCI-204			COMMENTS	More information will be sent to your Merced College e-mail account prior to orientation. Section 2410 requires online homework. The homework access code is included with purchase of a new text from the college bookstore or purchased separately from the publisher's web site for \$72.		
CONTACT	meidinger.s@mccd.edu or www.mccd.edu/faculty/stevemf																		
ORIENTATION	MANDATORY - June 21, 2010; 08:00p-04:50p; SCI-204																		
IN-CLASS SESSION	MID-TERM - July 8, 2010; 03:00p-04:50p; SCI-204 FINAL EXAM - July 29, 2010; 03:00p-04:50p; SCI-204																		
COMMENTS	More information will be sent to your Merced College e-mail account prior to orientation. Section 2410 requires online homework. The homework access code is included with purchase of a new text from the college bookstore or purchased separately from the publisher's web site for \$72.																		
<b>MERCED</b> 1051 MTWTh 08:00a-10:50a Retemeyer J IAC-143 1053 MTWTh 11:00a-01:50p Mason C IAC-143 6025 MTWTh 05:30p-08:20p Donaher T IAC-143																			
<b>LOS BAÑOS</b> 4083 MTWTh 02:00p-04:50p Winburn J LB-B-110																			
<b>MATH-C INTERMEDIATE ALGEBRA</b> 4 units: 72 total hours lecture. Prerequisite: MATH-A or MATH-B. Advisory: ENGL-A.																			
2408	HYBRID	Meidinger M																	
<table border="1" style="width: 100%; border-collapse: collapse;"> <tr> <td style="width: 15%;">CONTACT</td> <td colspan="3">www.mccd.edu/faculty/meidingerm</td> </tr> <tr> <td style="width: 15%;">ORIENTATION</td> <td colspan="3">MANDATORY - June 21, 2010; 03:00p-04:50p; SCI-207</td> </tr> <tr> <td style="width: 15%;">IN-CLASS SESSION</td> <td colspan="3">MID-TERM - July 8, 2010; 03:00p-04:50p; SCI-207 FINAL EXAM - July 29, 2010; 03:00p-04:50p; SCI-207</td> </tr> <tr> <td style="width: 15%;">COMMENTS</td> <td colspan="3">Bring required class material to the orientation. Section 2408 requires online homework. The homework access code is included with purchase of a new text from the college bookstore or purchased separately from the publisher's web site for \$72.</td> </tr> </table>				CONTACT	www.mccd.edu/faculty/meidingerm			ORIENTATION	MANDATORY - June 21, 2010; 03:00p-04:50p; SCI-207			IN-CLASS SESSION	MID-TERM - July 8, 2010; 03:00p-04:50p; SCI-207 FINAL EXAM - July 29, 2010; 03:00p-04:50p; SCI-207			COMMENTS	Bring required class material to the orientation. Section 2408 requires online homework. The homework access code is included with purchase of a new text from the college bookstore or purchased separately from the publisher's web site for \$72.		
CONTACT	www.mccd.edu/faculty/meidingerm																		
ORIENTATION	MANDATORY - June 21, 2010; 03:00p-04:50p; SCI-207																		
IN-CLASS SESSION	MID-TERM - July 8, 2010; 03:00p-04:50p; SCI-207 FINAL EXAM - July 29, 2010; 03:00p-04:50p; SCI-207																		
COMMENTS	Bring required class material to the orientation. Section 2408 requires online homework. The homework access code is included with purchase of a new text from the college bookstore or purchased separately from the publisher's web site for \$72.																		
<b>MERCED</b> 1054 MTWTh 08:00a-10:50a Gilbert T IAC-144 1055 MTWTh 11:00a-01:50p Retemeyer J VOC-138 6026 MTWTh 05:30p-08:20p Mitchell P IAC-144 Section 6026 requires online homework. The homework access code is included with purchase of a new text from the college bookstore. Access must be purchased separately if buying a used text at a cost of approximately \$49.35.																			
6031	MTWTh	05:30p-08:20p	Mohan R SCI-202																
<b>LOS BAÑOS</b> 4085 MTWTh 08:00a-10:50a Bryan J LB-B-110 4087 MTWTh 11:00a-01:50p Bryan J LB-B-110																			
<b>MATH-02 PRECALCULUS</b> (CSU breadth area B4) (IGETC area 2) 4 units: 72 total hours lecture. Limitation on enrollment: This course is not open to students having credit in MATH-17, MATH-25, or MATH-26. Prerequisite: MATH-C. Advisory: ENGL-A.																			
<b>MERCED</b> 1057 MTWTh 11:00a-01:50p Rieg K IAC-144 6035 MTWTh 05:30p-08:20p Retemeyer J SCI-203																			
<b>MATH-04A CALCULUS I</b> (CSU breadth area B4) (IGETC area 2) 4 units: 72 total hours lecture. Prerequisite: MATH-02, or MATH-25 and MATH-26. Advisory: ENGL-A.																			
<b>MERCED</b> 1226 MTWTh 11:00a-01:50p Souza S SCI-204																			
<b>MATH-10 ELEMENTARY STATISTICS</b> (CSU breadth area B4) (IGETC area 2) 3 units: 54 total hours lecture. Prerequisite: MATH-C. Advisory: ENGL-A.																			
<b>MERCED</b> 1058 MTWTh 08:00a-10:05a Rieg K SCI-207 1617 MTW 11:00a-01:50p Diaz L SCI-207 6027 TWTh 05:30p-08:20p Clark J SCI-207																			
<b>MATH-20A BASIC STRUCTURE OF MATHEMATICS I</b> (CSU breadth area B4) 3 units: 54 total hours lecture. Prerequisite: MATH-C. Advisory: ENGL-A.																			
<b>MERCED</b> 1020 MTWTh 10:15a-12:20p Brooke B SCI-203																			
<b>MATH-20B BASIC STRUCTURE OF MATHEMATICS II</b> (CSU breadth area B4) 3 units: 54 total hours lecture. Prerequisite: MATH-C. Advisories: ENGL-A; MATH-20A.																			
<b>MERCED</b> 1059 MTWTh 08:00a-10:05a Brooke B SCI-204																			
<b>MATH-80 PREALGEBRA</b> 4 units: 72 total hours lecture. Prerequisite: MATH-81. Advisories: ENGL-81, ENGL-81L.																			
2409	HYBRID	Mitchell P																	
<table border="1" style="width: 100%; border-collapse: collapse;"> <tr> <td style="width: 15%;">CONTACT</td> <td colspan="3">www.mccd.edu/faculty/mitchelp</td> </tr> <tr> <td style="width: 15%;">ORIENTATION</td> <td colspan="3">MANDATORY - June 21, 2010; 03:00p-04:50p; SCI-208</td> </tr> <tr> <td style="width: 15%;">IN-CLASS SESSION</td> <td colspan="3">MID-TERM #1 - July 1, 2010; 03:00p-04:50p; SCI-208 MID-TERM #2 - July 15, 2010; 03:00p-04:50p; SCI-208 FINAL EXAM - July 29, 2010; 03:00p-04:50p; SCI-208</td> </tr> <tr> <td style="width: 15%;">COMMENTS</td> <td colspan="3">Bring required class material to the orientation. Section 2409 requires online homework. The homework access code is included with purchase of a new text from the college bookstore or purchased separately from the publisher's web site for \$72.</td> </tr> </table>				CONTACT	www.mccd.edu/faculty/mitchelp			ORIENTATION	MANDATORY - June 21, 2010; 03:00p-04:50p; SCI-208			IN-CLASS SESSION	MID-TERM #1 - July 1, 2010; 03:00p-04:50p; SCI-208 MID-TERM #2 - July 15, 2010; 03:00p-04:50p; SCI-208 FINAL EXAM - July 29, 2010; 03:00p-04:50p; SCI-208			COMMENTS	Bring required class material to the orientation. Section 2409 requires online homework. The homework access code is included with purchase of a new text from the college bookstore or purchased separately from the publisher's web site for \$72.		
CONTACT	www.mccd.edu/faculty/mitchelp																		
ORIENTATION	MANDATORY - June 21, 2010; 03:00p-04:50p; SCI-208																		
IN-CLASS SESSION	MID-TERM #1 - July 1, 2010; 03:00p-04:50p; SCI-208 MID-TERM #2 - July 15, 2010; 03:00p-04:50p; SCI-208 FINAL EXAM - July 29, 2010; 03:00p-04:50p; SCI-208																		
COMMENTS	Bring required class material to the orientation. Section 2409 requires online homework. The homework access code is included with purchase of a new text from the college bookstore or purchased separately from the publisher's web site for \$72.																		
<b>MERCED</b> 1047 MTWTh 11:00a-01:50p Linebaugh B IT-4A 1051 MTWTh 08:00a-10:50a Souza S IT-4A 6029 MTWTh 05:30p-08:20p Linebaugh B SCI-208																			
<b>LOS BAÑOS</b> 4080 MTWTh 11:00a-01:50p Winburn J LB-B-111																			

**SUMMER CLASSES**

## Attachment 2: Los Banos Campus Courses Summer 2010

<b>MERCED COLLEGE</b>		<b>209.384.6000</b>					
<p><b>MATH-91 FUNDAMENTALS OF DECIMALS AND FRACTIONS</b> 3 units: 54 total hours lecture. Prerequisite: MATH-90. Advisories: ENGL-80, ENGL-80L.</p> <p><b>MERCED</b> 1062 MTWTh 10:15a-12:20p Heng L AG-10</p>	<p><b>MERCED</b> PHED-03 Waterpolo for Women 1045 MTWTh 08:00a-10:05a Halpin W FHA</p> <p>PHED-03 Volleyball 1232 TWTh 08:00a-10:50a Casey J GYM-1 Section 1232 is Volleyball.</p> <p>PHED-03 Football 1268 MTWTh 12:30p-02:35p Kaanapu M STAD</p>						
<b>MUSIC (MUS)</b>							
<p>Note: Many four-year colleges have a maximum number of acceptable performance course units.</p>							
<p><b>MUS-14 HISTORY OF AMERICAN POPULAR MUSIC</b> (CSU breadth area C1) (IGETC area 3A) 3 units: 54 total hours lecture. Advisory: ENGL-A.</p> <p><b>MERCED</b> 1270 TWTh 11:00a-01:50p Keane F ART-1</p>	<p><b>PHED-10A AEROBICS</b> 1 unit: 54 total hours lab. Advisories: Good general health; absence of medical conditions that would prevent planned physical activity.</p> <p><b>MERCED</b> 1212 MTWTh 08:00a-10:05a Rivero R GYM-4 1213 MTWTh 10:15a-12:20p Cruz O STAD 1216 MTWTh 12:30p-02:35p Walter L GYM-4 1215 MTWTh 02:45p-04:50p Serna R GYM-4 6049 MTWTh 05:30p-07:35p Cruz O GYM-4</p>						
<p><b>MUS-27A PIANO I</b> 2 units: 36 total hours lecture. Advisory: ENGL-A.</p> <p><b>MERCED</b> 1065 TTh 08:00a-10:50a Dokel M MUS-1</p>							
<p><b>MUS-27B PIANO II</b> 2 units: 36 total hours lecture. Prerequisite: MUS-27A. Advisory: ENGL-A.</p> <p><b>MERCED</b> 1066 TTh 08:00a-10:50a Dokel M MUS-1</p>							
<b>NURSING, VOCATIONAL (VOCN)</b>							
<p><b>VOCN-46A APPLIED MATHEMATICS FOR PHARMACOLOGY</b> 1 unit: 18 total hours lecture. Prerequisites: ENGL-A, MATH-80. Advisory: ALLH-67.</p> <p><b>MERCED</b> 1245 M 08:00a-11:20a Sparks R AHC-125</p>							
<b>NUTRITION (NUTR)</b>							
<p><b>NUTR-10 NUTRITION</b> (CSU breadth area E) 3 units: 54 total hours lecture. Advisory: ENGL-A.</p> <p>2401 HYBRID Cronk L</p>							
<table border="1" style="width: 100%; border-collapse: collapse;"> <tr> <td style="width: 20%;"><b>CONTACT</b></td> <td>cronk_l@ccd.edu</td> </tr> <tr> <td><b>ORIENTATION</b></td> <td>MANDATORY - June 21, 2010, 05:30p-07:20p, COM-2</td> </tr> <tr> <td><b>IN-CLASS SESSION</b></td> <td>July 12, 29, 2010, 05:30p-07:20p, VOC-139</td> </tr> </table>		<b>CONTACT</b>	cronk_l@ccd.edu	<b>ORIENTATION</b>	MANDATORY - June 21, 2010, 05:30p-07:20p, COM-2	<b>IN-CLASS SESSION</b>	July 12, 29, 2010, 05:30p-07:20p, VOC-139
<b>CONTACT</b>	cronk_l@ccd.edu						
<b>ORIENTATION</b>	MANDATORY - June 21, 2010, 05:30p-07:20p, COM-2						
<b>IN-CLASS SESSION</b>	July 12, 29, 2010, 05:30p-07:20p, VOC-139						
<b>PHILOSOPHY (PHIL)</b>							
<p><b>PHIL-10 CRITICAL THINKING</b> (CSU breadth area A3) [CILC area G] 3 units: 54 total hours lecture. Prerequisites: ENGL-A. Advisories: ENGL-01A.</p> <p><b>MERCED</b> 1506 MTWTh 10:15a-12:20p Werness G IAC-146</p>							
<p><b>PHIL-13 CRITICAL REASONING AND WRITING (ALSO: ENGL-13)</b> (CSU breadth area A3) (IGETC area 1B) [CILC area G] 3 units: 54 total hours lecture. Prerequisite: ENGL-01A.</p> <p><b>MERCED</b> 6032 TWTh 05:30p-08:20p Kahler S IAC-120</p>							
<b>PHYSICAL EDUCATION (PHED)</b>							
<p><b>PHED-03 VARSITY CONDITIONING</b> 1 unit: 54 total hours lab. Advisories: Good general health; absence of medical conditions that would prevent planned physical activity.</p>							

**FITNESS AND STRENGTH LAB HOURS**  
June 21 - July 29, 2010

OPEN LAB TIMES  
Monday, Tuesday, Wednesday, Thursday  
09:00a-01:50p and  
05:00p-07:50p

Friday, Saturday, Sunday CLOSED

**PHED-10C CIRCUIT WEIGHT TRAINING**  
0.5 unit: 27 total hours lab.  
Advisory: Good general health; absence of medical conditions that would prevent physical activity.

**MERCED**  
1244 27 hours by arrangement Casey J GYM-5

**PHED-10E FITNESS THROUGH ACTIVITY**  
0.5 - 1 unit: 27-54 total hours lab.  
Advisory: Good general health; absence of medical conditions that would prevent planned physical activity.

**MERCED**

**PHED-10E Women's Basketball (1.0 unit)**  
6017 MW 05:30p-10:05p Huddleston A GYM-1

**PHED-10E Men's Basketball (1.0 unit)**  
6015 TTh 05:30p-09:45p Russell W GYM-1

**PHED-10E Men's Football (.50 unit)**  
9180 MTWThFS 04:00p-05:10p Kaanapu M STAD  
Section 9180 is held from 07/24/10 to 08/14/10.

**PHED-10H WALKING FOR CARDIOVASCULAR CONDITIONING AND FLEXIBILITY**  
1 unit: 54 total hours lab.  
Advisory: Good general health; absence of medical conditions that would prevent planned physical activity.

**LOS BAÑOS**  
4093 MTWTh 07:00a-09:05a Gomes A LB-B-106  
Section 4093 will meet for an orientation on June 21, 2010 in LB-B-106. All other class sessions will be held off campus at Oliveira Park, corner of Ortigaña and Cardoza, Los Baños.

**PHED-12E VOLLEYBALL**  
1 unit: 54 total hours lab.  
Advisory: Good general health; absence of medical conditions that would prevent planned physical activity.

**LOS BAÑOS**  
4095 MTWTh 09:30a-11:35a Gomes A LB-A-105

**SUMMER CLASSES**

**Attachment 2: Los Banos Campus Courses  
Summer 2010**

MERCED COLLEGE		209.384.6000	
<b>SOCIOLOGY (SOC)</b>			
<b>SOC-01 INTRODUCTION TO SOCIOLOGY</b>			
(CSU breadth area D0) (IGETC area 4J)			
3 units; 54 total hours lecture.			
Advisories: ENGL-01A.			
<b>MERCED</b>			
8053	TTh	05:30p-09:45p	Sanchez G VOC-140
9105	MTWTh	08:00a-12:35p	Salch E IAC-142
Section 9105 is held from 06/21/10 to 07/08/10.			
<b>LOS BAÑOS</b>			
4120	TWTh	11:00a-01:50p	Staff LB-B-107
<b>SONOGRAPHY, DIAGNOSTIC MEDICAL (SONO)</b>			
<b>SONO-38B ADVANCED CLINICAL EXPERIENCE I</b>			
4.5 units; 243 total hours lab.			
Limitation on enrollment: Enrollment in the Diagnostic Medical Sonography Program (Cardiac Track). Prerequisite: SONO-37B.			
<b>MERCED</b>			
9075		243 hours by arrangement	Guthrie J HOSP
Section 9075 is held from 06/07/10 to 08/04/10.			
<b>SONO-44A ADVANCED ULTRASOUND PHYSICS</b>			
[CILC area B]			
1.5 units; 27 total hours lecture.			
Limitation on enrollment: Enrollment in the Diagnostic Medical Sonography Program.			
<b>MERCED</b>			
9076	Th	08:00a-10:50a	Guthrie J AHC-157
Section 9076 is held from 06/10/10 to 08/05/10.			
<b>SONO-44B ADVANCED CLINICAL EXPERIENCE I</b>			
[CILC area B]			
4.5 units; 252 total hours lab.			
Limitation on enrollment: Enrollment in the Diagnostic Medical Sonography program--Abdominal & OB/GYN Track. Two-way corequisite: SONO-44C.			
<b>MERCED</b>			
9077		252 hours by arrangement	Guthrie J HOSP
Section 9077 is held from 06/07/10 to 08/04/10.			
<b>SONO-44C SUPERFICIAL STRUCTURES</b>			
[CILC area B]			
1 unit; 9 total hours lecture, 27 total hours lab.			
Limitation on enrollment: Enrollment in the Diagnostic Medical Sonography program--Abdominal & OB/GYN Track.			
<b>MERCED</b>			
9078	Th	11:00a-02:50p	Guthrie J AHC-157
Section 9078 is held from 06/10/10 to 08/05/10.			
<b>SPANISH (SPAN)</b>			
<b>SPAN-01 ELEMENTARY SPANISH</b>			
(CSU breadth area C2) (IGETC area 6)			
5 units; 90 total hours lecture.			
Advisory: ENGL-84.			
<b>MERCED</b>			
1098	MTWTh	08:00a-11:35a	Moore R IAC-110
<b>LOS BAÑOS</b>			
4110	MTWTh	11:45a-03:20p	Cortes S LB-B-112

**SUMMER CLASSES**

**Attachment 2: Los Baños Campus Courses  
Fall 2010**

	<p><b>MERCED COLLEGE</b></p> <hr/> <p style="font-size: 2em; font-weight: bold;">LOS BAÑOS CLASSES</p>	<p><b>209.384.6000</b></p>
LOS BAÑOS	<p align="center"><b>LOS BAÑOS STUDENT SERVICES</b></p> <p><b>AUGUST 18, 2010 - DECEMBER 17, 2010</b></p> <p>Monday, Tuesday, Thursday, Friday ..... 08:00a-04:30p          Wednesday ..... 08:00a-07:00p</p> <p><b>FALL 2010 EXCEPTIONS:</b>  <b>AUGUST 2-6, 2010</b></p> <p>Monday, Tuesday, Wednesday, Thursday ..... 08:00-07:00p          Friday ..... CLOSED</p> <p><b>AUGUST 9-13, 2010</b></p> <p>Monday, Tuesday, Wednesday, Thursday ..... 08:00a-07:00p          Friday ..... 08:00a-04:30p</p> <p><b>AUGUST 18-20, 2010</b></p> <p>Wednesday, Thursday ..... 08:00a-07:00p          Friday ..... 08:00a-04:30p</p>	<p align="center"><b>LOS BAÑOS CAMPUS</b> (209 AREA CODE)</p> <p>Los Baños Campus Switchboard ..... 826-3495 or 381-6411          Bookstore ..... 381-6424          CallWORK's Student Support Services (C388) ..... 381-6428          Computer Lab ..... 381-6421          Continuing Education (Non-credit Program) ..... 381-6419          Disabled Student Services ..... 381-6423          EOPS ..... 381-6436          Financial Aid ..... 381-6435          Guidance ..... 381-6411          Library ..... 381-6427          Security ..... 381-6425          Student Fees Office ..... 381-6419          Student Help Desk* ..... 381-6565</p>
LOS BAÑOS	<p align="center"><b>LOS BAÑOS COUNSELING</b></p> <p><b>AUGUST 18, 2010 - DECEMBER 17, 2010</b></p> <p>Monday, Tuesday, Wednesday, Thursday ..... By Appointment          Friday Drop -in ..... 08:30a-12:30p</p> <p><b>FALL 2010 EXCEPTIONS</b>  <b>AUGUST 2-6, 2010</b></p> <p>Monday, Tuesday, Thursday ..... 12:00p-03:00p          Wednesday ..... 12:00p-06:00p          Friday ..... CLOSED</p> <p><b>AUGUST 9-13, 2010</b></p> <p>Monday, Tuesday, Wednesday, Thursday ..... 09:00a-06:30p          Friday ..... 08:30a-04:30p</p> <p><b>AUGUST 18-20, 2010</b></p> <p>Wednesday, Thursday ..... 08:30a-06:30p          Friday ..... 08:30a-04:30p</p>	<p align="center"><b>ACCOUNTING (ACTG)</b></p> <p><b>ACTG-04A FINANCIAL ACCOUNTING</b>          4 units; 4 hours lecture.          Advisories: ACTG-51; ENGL-A; MATH-91.          This course provides the student with the knowledge of corporate financial statement reporting and the ability to analyze the reports of a corporation. This accounting course is recommended for students who have knowledge of or equivalent experience in the basics of bookkeeping.          8003 TTh 05:30p-07:20p Snipes R LB-B-136</p> <p><b>ACTG-51 APPLIED ACCOUNTING</b>          4 units; 4 hours lecture.          Advisories: ENGL-91; MATH-80.          This course is an entry-level accounting course emphasizing a preparer approach using manual accounting methods, and comparing them to current computerized accounting. Other topics in accounting may also be covered including payroll, cash, inventory, bad debts, and depreciation.          8005 TTh 07:30p-09:20p Snipes R LB-B-136</p>
LOS BAÑOS	<p align="center"><b>LOS BAÑOS STUDENT FEES</b></p> <p><b>AUGUST 18, 2010 - DECEMBER 17, 2010</b></p> <p>Monday, Tuesday, Thursday, Friday ..... 09:00a-03:00p          Wednesday ..... 09:00a-06:00p</p> <p><b>FALL 2010 EXCEPTIONS:</b>  <b>AUGUST 2-6, 2010</b></p> <p>Monday, Tuesday, Wednesday, Thursday ..... 09:00a-06:00p          Friday ..... CLOSED</p> <p><b>AUGUST 9-13, 2010</b></p> <p>Monday, Tuesday, Wednesday, Thursday ..... 09:00a-06:00p          Friday ..... 09:00a-03:00p</p> <p><b>AUGUST 18-20, 2010</b></p> <p>Wednesday, Thursday ..... 09:00a-06:00p          Friday ..... 09:00a-03:00p</p>	<p align="center"><b>NURSE ASSISTANT ORIENTATIONS</b></p> <p>Students must purchase a Merced College Nurse Assistant Program Handbook at the MC Bookstore Prior to orientation. The orientation will provide the necessary information needed to successfully complete the requirements prior to registration. Prospective students must attend an orientation before the beginning of a new class. The orientation sessions are open to the general public.</p> <p align="center"><b>LOS BAÑOS CAMPUS</b></p> <p>Orientations are held in LB A-105 and begin at 04:00p and last approximately 30-45 minutes. The dates are:          April 14, 2010          April 28, 2010          May 12, 2010          May 26, 2010          June 9, 2010</p>



**Attachment 2: Los Banos Campus Courses  
Fall 2010**

WWW.MCCD.EDU		FALL 2010	
<b>ALLIED HEALTH (ALLH)</b>			
<b>ALLH-80 NURSE ASSISTANT</b>			
5.5 units: 3 hours lecture, 7.5 hours lab. Limitation on enrollment: Orientation workshop; CPR card - Module A/C; negative TB screening test within past 6 months or negative chest x-ray within past year; DOJ fingerprint clearance; Penal Code Violations clearance. Advisories: ENGL-80, ENGL-84. The course provides clinical instruction and practice of basic nursing skills required of nursing assistants employed in skilled nursing facilities and extended care facilities.			
8031	W	05:00p-08:50p	Koch M LB-B-138
Students enrolling in a Los Banos lecture section must enroll in the following lab:			
4033	SAT	07:00a-03:35p	Koch M LB-B-138
Section 4033 includes a 1/2 hour lunch. Section 4033 will meet from 8/21/10 to 9/4/10 in LB-B-138. Beginning 9/11/10 this section will meet at New Bethany Skilled Nursing Facility, 1441 Berkeley Dr., Los Banos. Section 4033 does not meet 11/27/10.			
<b>ALLH-87 MEDICAL TERMINOLOGY</b>			
3 units: 3 hours lecture. Advisory: ENGL-A. This course is a study of general medical terminology – diagnostic, operative, and symptomatic terms related to body systems – with emphasis on proper spelling and pronunciation.			
4035	TTh	08:00a-09:15a	Comer-Henley M LB-B-105
<b>ADMINISTRATIVE OFFICE MANAGEMENT (AOM)</b>			
<b>AOM-50A KEYBOARDING</b>			
1 unit: .5 hour lecture, 1.5 hours lab. Advisories: ENGL-81, ENGL-84. This course includes development of basic computerized keyboarding techniques by touch, and speed and accuracy.			
4636	MW	11:00a-11:50a	Farmer V LB-A-109
<b>ANTHROPOLOGY (ANTH)</b>			
<b>ANTH-02 CULTURAL ANTHROPOLOGY</b>			
(CSU breadth area D1) (IGETC area 4A) 3 units: 3 hours lecture. Advisories: ENGL-A. Subjects include subsistence patterns, social and political organization, language and communication, family and kinship, religion, the arts, social inequality, ethnicity, gender, and culture change.			
8061	T	07:00p-09:50p	Gaugler C LB-B-107
<b>ART (ART)</b>			
<b>ART-01 ART HISTORY – ANCIENT THROUGH GOTHIC</b>			
(CSU breadth area C1) (IGETC area 3A) 3 units: 3 hours lecture. Advisory: ENGL-01A. This course is a survey of the development of the art, architecture, sculpture, painting, and the minor arts, from pre-history through the Gothic period.			
4081	TTh	08:00a-09:15a	Staff LB-B-107
<b>ART-16 FUNDAMENTALS OF DESIGN IN ART</b>			
(CSU breadth area C1) 3 units: 2 hours lecture, 3 hours lab. Advisory: ENGL-01A. This course is an introduction to the theory and practice of fundamental design elements and principles as applied to fine arts, graphics, and various design fields.			
4083	TTh	01:00p-03:15p	Donovan M LB-B-101
<b>ART-17A CERAMICS - POTTERY</b>			
3 units: 2 hours lecture, 3 hours lab. Advisory: ENGL-A. This course is a survey of ceramic materials (clays and glazes) and their function in relation to design as an art form. Basic studio practice in the hand-building processes, decorating, glazing, and firing of ware, and an introduction to the potter's wheel are included.			
8081	TTh	05:30p-07:45p	Caredo S LBHS Section 8081 is located at Los Banos High School; 1956 11th St; Room 605; Los Banos.
<b>ART-17B INTERMEDIATE CERAMICS - POTTERY</b>			
3 units: 2 hours lecture, 3 hours lab. Prerequisite: ART-17A. Advisory: ENGL-A. Stress is placed upon the attainment of skill on the potter's wheel and organization of construction problems. Students pursue projects of individual interest.			
8083	TTh	05:30p-07:45p	Caredo S LBHS Section 8083 is located at Los Banos High School; 1956 11th St; Room 605; Los Banos.
<b>ART-17C ADVANCED CERAMICS - POTTERY</b>			
3 units: 2 hours lecture, 3 hours lab. Prerequisite: ART-17B. Advisory: ENGL-A. Students will participate in glaze composition and experience advanced decorating and glazing techniques. Students will pursue projects of individual interest related to the objectives of the course.			
8085	TTh	05:30p-07:45p	Caredo S LBHS Section 8085 is located at Los Banos High School; 1956 11th St; Room 605; Los Banos.
<b>ART-24A DRAWING I</b>			
(CSU Breadth Area C1) 3 units: 2 hours lecture, 3 hours lab. Prerequisite/Advisory: None. Students will explore foundation-level concepts while surveying materials used in drawing as an art form, as well as the history of their development.			
4085	TTh	10:30a-12:45p	Donovan M LB-B-101
<b>ART-24B DRAWING II</b>			
3 units: 2 hours lecture, 3 hours lab. Prerequisite: ART-24A. Problems in perspective, proportion, and form will be addressed. A more advanced approach to concept and techniques in media are also included, as well as the history of their development.			
4087	TTh	10:30a-12:45p	Donovan M LB-B-101
<b>BIOLOGY (BIOL)</b>			
<b>BIOL-01 GENERAL BIOLOGY FOR NON-MAJORS</b>			
(CSU breadth area B2/B3) (IGETC area 5B) 4 units: 3 hours lecture, 3 hours lab. Advisory: ENGL-A. Note: This course is not available to students having a grade of "C" or better in BIOL-04A or BIOL-04AH. Areas stressed include the origin of life, structure and function of cells, basic processes of life, reproduction, ecology, microbiology, evolution, classification, genetics, and metabolic processes. Students enrolling in a Los Banos lecture must enroll in a Los Banos lab:			
4131	TTh	12:30p-01:45p	Coburn C LB-A-103
Students enrolling in a Los Banos lecture must enroll in one of the following Los Banos labs:			
4134	T	09:00a-11:50a	Coburn C LB-B-102
4132	T	02:00p-04:50p	Coburn C LB-B-102
4133	Th	02:00p-04:50p	Coburn C LB-B-102
<b>BIOL-02 HUMAN BIOLOGY</b>			
4 units: 3 hours lecture, 3 hours lab. Limitation on enrollment: This course is not open to students having a C or better in BIOL-04A or BIOL-04AH. Advisories: ENGL-A; LRNR-30. Topics covered include scientific method, cell structure and function,			



**Attachment 2: Los Baños Campus Courses  
Fall 2010**

<b>MERCED COLLEGE</b>		<b>209.384.6000</b>				
<b>LOS BAÑOS</b>	biochemistry, metabolism, cell division, heredity, biotechnology, evolution, anatomy and physiology of the human body, development and aging, disease, and ecology.			<b>CHEMISTRY (CHEM)</b>		
	8150	MW & M	05:30p-06:45p 02:00p-04:50p	Coburn C (lec) Coburn C (lab)	LB-B-107 LB-B-102	
	8131	MW & W	05:30p-06:45p 07:00p-09:50p	Coburn C (lec) Coburn C (lab)	LB-B-107 LB-B-102	
	<b>BIOL-16 GENERAL HUMAN ANATOMY</b> (CSU breadth area B2/B3) (IGETC area 5B) 4 units: 2 hours lecture, 6 hours lab. Prerequisite: BIOL-01 or BIOL-02 or BIOL-50. Advisory: ENGL-A. Consideration is given to the skeletal, muscular, circulatory, respiratory, digestive, excretory, reproductive, and nervous systems. Special emphasis is placed on the needs of students majoring in biology, nursing, physical education, and medical sciences.					
	4137	MW & MW	01:00p-01:50p 09:00a-11:50a	Latham E (lec) Latham E (lab)	LB-B-107 LB-B-104	
	4138	MW & MW	01:00p-01:50p 02:00p-04:50p	Latham E (lec) Latham E (lab)	LB-B-107 LB-B-104	
	<b>BIOL-18 PRINCIPLES OF PHYSIOLOGY</b> (CSU breadth area B2/B3) (IGETC area 5B) 4 units: 3 hours lecture, 3 hours lab. Prerequisites: BIOL-01 or BIOL-02 or BIOL-16; CHEM-02A. Advisory: ENGL-A. This course is a study of blood and circulation, respiration, muscle activity, endocrine glands, digestion, excretion, and the functions and activities of the brain, nerves, and sense organs.					
	4140	TTh & T	09:30a-10:45a 11:00a-01:50p	Latham E (lec) Latham E (lab)	LB-B-104 LB-B-104	
	<b>BIOL-60 SURVEY OF ANATOMY AND PHYSIOLOGY</b> 3 units: 3 hours lecture. Advisory: ENGL-A. This course is designed as an elementary course for students with limited background in science or biology.					
	2531	ONLINE	Latham E			
<b>CONTACT</b>		The instructor has office hours in Los Baños				
<b>COMMENTS</b>		Students must log in within the first three days of the semester or they may be dropped from the class.				
<b>LOS BAÑOS</b>	<b>BUSINESS (BUS)</b>					
	<b>BUS-10 INTRODUCTION TO BUSINESS</b> 3 units: 3 hours lecture. Advisory: ENGL-A. This course covers economic foundations, types of business organizations, marketing, money and banking, and finance. This information will be integrated and related to social, political, legal, and international matters affecting the United States.					
	8171	W	07:00p-09:50p	McMurray P	LB-A-103	
	<b>LOS BAÑOS</b>	Students enrolling in a Los Baños lecture must enroll in one of the following Los Baños labs:				
		4195	M	01:00p-03:50p	Wilson D	LB-B-105
		4197	W	01:00p-03:50p	Wilson D	LB-B-105
		8193	T	07:00p-09:50p	Wilson D	LB-B-105
		<b>CHILD DEVELOPMENT (CLDV)</b>				
		<b>CLDV-01 CHILD GROWTH AND DEVELOPMENT</b> 3 units: 3 hours lecture. Advisory: ENGL-A. The growth and development patterns of all children from prenatal life through adolescence will be studied. There will be a strong integration of theory and practice. There will be directed observations of children from newborn through adolescence.				
		4221	M	02:00p-04:50p	Penney B	LB-B-106
<b>CLDV-03 PRINCIPLES AND PRACTICES OF TEACHING YOUNG CHILDREN</b> 3 units: 3 hours lecture. One-way corequisite: CLDV-01. Advisory: ENGL-A. This course is an examination of the underlying theoretical principles of developmentally appropriate practices applied to programs, environments, emphasizing the key role of relationships, constructive adult-child interactions, and teaching strategies in supporting physical, social, creative and intellectual development for all children ages 0-6.						
2558		ONLINE	Penney B			
Section 2558 instructor has office hours in Los Baños.						
<b>CLDV-04 OBSERVATION AND ASSESSMENT</b> 3 units: 2 hours lecture, 3 hours lab. Limitation on enrollment: students must have a negative result on a TB test within the past 4 years. Prerequisite: CLDV-01. One-way corequisite: CLDV-03. Advisory: ENGL-A. This course focuses on strategies to obtain an authentic view of the whole child. Observational techniques and other assessment tools will be studied, practiced and evaluated using all the domains of development.						
8222	M	05:30p-07:20p	Penney B	LB-B-136		
Plus 3 hours by arrangement						
<b>CLDV-05 HEALTH, SAFETY AND NUTRITION</b> 3 units: 3 hours lecture. Advisory: ENGL-A. This course examines health, safety and nutrition issues for young children. This course provides necessary information for teachers and staff working in child care settings as well as current concerns related to regulations and policies for health, safety and nutrition required by licensing.						
4225	W	02:00p-04:50p	Penney B	LB-B-101		
<b>CLDV-07 INTRODUCTION TO CURRICULUM FOR THE YOUNG CHILD</b> 3 units: 3 hours lecture. One-way corequisite: CLDV-03. Advisory: ENGL-A. Students will examine teacher's roles in supporting development and fostering learning for all young children using observation and assessment strategies emphasizing the essential role of play.						
2559	ONLINE	Penney B				
Section 2559 instructor has office hours in Los Baños.						

**Attachment 2: Los Banos Campus Courses  
Fall 2010**

WWW.MCCD.EDU		FALL 2010																																																			
<p align="center"><b>COMMUNICATION STUDIES (COMM)</b></p> <p><b>COMM-01 FUNDAMENTALS OF SPEECH</b> (IGETC area 1C) (CSU breadth area A1) 3 units: 3 hours lecture. Prerequisite: ENGL-A.</p> <p>The focus will be on speeches to inform and persuade. By the end of the course, students should be speaking confidently and skillfully and should be able to transfer their understanding and skills from the classroom to "real world" situations.</p> <table border="0"> <tr> <td>4241</td> <td>T</td> <td>08:00a-10:50a</td> <td>Howard C</td> <td>LB-B-138</td> </tr> <tr> <td>8244</td> <td>W</td> <td>07:00p-09:50p</td> <td>Upton Benton T</td> <td>LB-B-135</td> </tr> </table>		4241	T	08:00a-10:50a	Howard C	LB-B-138	8244	W	07:00p-09:50p	Upton Benton T	LB-B-135	<p align="center"><b>DRAMA (DRAM)</b></p> <p><b>DRAM-01 INTRODUCTION TO THEATER</b> (CSU breadth area C1/C2) (IGETC area 3B) 3 units: 3 hours lecture. Advisory: ENGL-A.</p> <p>This course is an introduction to the art of theater that delves into the nature of theatrical presentation, elements of dramatic structure, and the contributions of the playwright, actor, director, designer, technician, and audience.</p> <table border="0"> <tr> <td>4296</td> <td>F</td> <td>09:00a-11:50a</td> <td>Moriston J</td> <td>LB-B-112</td> </tr> </table>		4296	F	09:00a-11:50a	Moriston J	LB-B-112																																			
4241	T	08:00a-10:50a	Howard C	LB-B-138																																																	
8244	W	07:00p-09:50p	Upton Benton T	LB-B-135																																																	
4296	F	09:00a-11:50a	Moriston J	LB-B-112																																																	
<p><b>COMM-04 SMALL GROUP DISCUSSION AND PROBLEM SOLVING</b> (CSU breadth area A1) (IGETC area 1C - CSU only) 3 units: 3 hours lecture. Prerequisite: ENGL-A.</p> <p>This is a course designed to help students develop critical thinking skills for communication and working together on small group tasks. Emphasis is placed on problem solving, reasoning, conflict resolution, and leadership.</p> <table border="0"> <tr> <td>8243</td> <td>Th</td> <td>07:00p-09:50p</td> <td>Baker D</td> <td>LB-B-135</td> </tr> </table>		8243	Th	07:00p-09:50p	Baker D	LB-B-135	<p align="center"><b>ECONOMICS (ECON)</b></p> <p><b>ECON-01A INTRODUCTION TO MACROECONOMICS</b> (CSU breadth area D2) (IGETC area 4B) 3 units: 3 hours lecture. Advisories: ENGL-A; MATH-A.</p> <p>This course covers theories including the determination of income, output, employment, and prices in the economy; the monetary system; governmental fiscal, monetary, and income policies; economic growth; international trade; and economic development.</p> <table border="0"> <tr> <td>8310</td> <td>Th</td> <td>05:30p-08:20p</td> <td>McNally T</td> <td>LB-A-103</td> </tr> </table>		8310	Th	05:30p-08:20p	McNally T	LB-A-103																																								
8243	Th	07:00p-09:50p	Baker D	LB-B-135																																																	
8310	Th	05:30p-08:20p	McNally T	LB-A-103																																																	
<p><b>CPSC-30 COMPUTER APPLICATIONS</b> [CILC areas A,B,C,D,E,F] 3 units: 2 hours lecture, 3 hours lab. Advisories: ACM-50A or ACM-50B (keyboard at a minimum of 20 GIGAM); ENGL-81, ENGL-84; MATH-80.</p> <p>Computer applications including word-processing, spreadsheets, databases, and presentation managers will be covered.</p> <table border="0"> <tr> <td>2598</td> <td>ONLINE</td> <td></td> <td>Garcia Martínez J</td> <td></td> </tr> </table> <p>CONTACT: <a href="mailto:Juan.garcia955@mccd.edu">Juan.garcia955@mccd.edu</a></p>		2598	ONLINE		Garcia Martínez J		<p align="center"><b>ENGLISH (ENGL)</b></p> <p><b>ENGL-A FOUNDATIONS IN ACADEMIC LITERACY</b> [CILC area G] 4 units: 4 hours lecture. Prerequisites: ENGL-81, ENGL-84. Two-way corequisite: ENGL-AL.</p> <p>This course offers a review of grammar and English usage in conjunction with composition assignments. Reading assignments cover a variety of subjects for class discussion and provide a means for increasing reading comprehension and analysis.</p> <p>Students enrolling in a Los Baños Campus lecture must enroll in a Los Baños Campus lab.</p> <table border="0"> <tr> <td>4347</td> <td>MW</td> <td>10:00a-11:50a</td> <td>Flanagan J</td> <td>LB-B-134</td> </tr> <tr> <td>4348</td> <td>MW</td> <td>02:00p-03:50p</td> <td>Flanagan J</td> <td>LB-B-135</td> </tr> <tr> <td>4349</td> <td>TTh</td> <td>10:00a-11:50a</td> <td>Zabalbeascoa J</td> <td>LB-B-136</td> </tr> <tr> <td>4350</td> <td>TTh</td> <td>02:00p-03:50p</td> <td>Wilson J</td> <td>LB-B-112</td> </tr> <tr> <td>8346</td> <td>MW</td> <td>06:30p-08:20p</td> <td>Baker W</td> <td>LB-B-134</td> </tr> </table> <p>9920 MTWTh 01:00p-02:50p Serigaglia A LB-B-136 Section 9920 is held from 10/18/10 to 12/17/10.</p>		4347	MW	10:00a-11:50a	Flanagan J	LB-B-134	4348	MW	02:00p-03:50p	Flanagan J	LB-B-135	4349	TTh	10:00a-11:50a	Zabalbeascoa J	LB-B-136	4350	TTh	02:00p-03:50p	Wilson J	LB-B-112	8346	MW	06:30p-08:20p	Baker W	LB-B-134																				
2598	ONLINE		Garcia Martínez J																																																		
4347	MW	10:00a-11:50a	Flanagan J	LB-B-134																																																	
4348	MW	02:00p-03:50p	Flanagan J	LB-B-135																																																	
4349	TTh	10:00a-11:50a	Zabalbeascoa J	LB-B-136																																																	
4350	TTh	02:00p-03:50p	Wilson J	LB-B-112																																																	
8346	MW	06:30p-08:20p	Baker W	LB-B-134																																																	
<p align="center"><b>LOS BAÑOS</b></p> <table border="0"> <tr> <td>4253</td> <td>MW</td> <td>08:00a-10:15a</td> <td>Farmer V</td> <td>LB-A-108</td> </tr> <tr> <td>4257</td> <td>TTh</td> <td>10:00a-12:15p</td> <td>Langley S</td> <td>LB-A-109</td> </tr> <tr> <td>4258</td> <td>TTh</td> <td>01:00p-03:15p</td> <td>Langley S</td> <td>LB-A-110</td> </tr> <tr> <td>8255</td> <td>MW</td> <td>07:00p-09:15p</td> <td>Garcia Martínez J</td> <td>LB-A-108</td> </tr> </table>		4253	MW	08:00a-10:15a	Farmer V	LB-A-108	4257	TTh	10:00a-12:15p	Langley S	LB-A-109	4258	TTh	01:00p-03:15p	Langley S	LB-A-110	8255	MW	07:00p-09:15p	Garcia Martínez J	LB-A-108	<p align="center"><b>ENGL-AL ACADEMIC LITERACY LAB</b> 1 unit: 3 hours lab. Two-way corequisite: ENGL-A. Advisory: ACM-50A.</p> <p>This is a computer-based lab designed to improve reading and writing skills through a variety of modalities, including individualized instruction and assistance.</p> <p>Students enrolling in a Los Baños Campus lab must enroll in a Los Baños Campus lecture.</p> <table border="0"> <tr> <td>4367</td> <td>MW</td> <td>08:00a-09:15a</td> <td>Serigaglia A</td> <td>LB-A-109</td> </tr> <tr> <td>4368</td> <td>MW</td> <td>12:30p-01:45p</td> <td>Flanagan J</td> <td>LB-A-109</td> </tr> <tr> <td>4371</td> <td>MW</td> <td>04:30p-05:45p</td> <td>Baker W</td> <td>LB-A-109</td> </tr> <tr> <td>4369</td> <td>TTh</td> <td>08:00a-09:15a</td> <td>Zabalbeascoa J</td> <td>LB-A-109</td> </tr> <tr> <td>4370</td> <td>TTh</td> <td>12:30p-01:45p</td> <td>Zabalbeascoa J</td> <td>LB-A-109</td> </tr> <tr> <td>8350</td> <td>MW</td> <td>08:30p-09:45p</td> <td>Baker W</td> <td>LB-A-109</td> </tr> </table> <p>9922 MTWTh 03:00p-04:15p Serigaglia A LB-A-109 Section 9922 is held from 10/18/10 to 12/16/10.</p>		4367	MW	08:00a-09:15a	Serigaglia A	LB-A-109	4368	MW	12:30p-01:45p	Flanagan J	LB-A-109	4371	MW	04:30p-05:45p	Baker W	LB-A-109	4369	TTh	08:00a-09:15a	Zabalbeascoa J	LB-A-109	4370	TTh	12:30p-01:45p	Zabalbeascoa J	LB-A-109	8350	MW	08:30p-09:45p	Baker W	LB-A-109
4253	MW	08:00a-10:15a	Farmer V	LB-A-108																																																	
4257	TTh	10:00a-12:15p	Langley S	LB-A-109																																																	
4258	TTh	01:00p-03:15p	Langley S	LB-A-110																																																	
8255	MW	07:00p-09:15p	Garcia Martínez J	LB-A-108																																																	
4367	MW	08:00a-09:15a	Serigaglia A	LB-A-109																																																	
4368	MW	12:30p-01:45p	Flanagan J	LB-A-109																																																	
4371	MW	04:30p-05:45p	Baker W	LB-A-109																																																	
4369	TTh	08:00a-09:15a	Zabalbeascoa J	LB-A-109																																																	
4370	TTh	12:30p-01:45p	Zabalbeascoa J	LB-A-109																																																	
8350	MW	08:30p-09:45p	Baker W	LB-A-109																																																	
<p align="center"><b>CRIMINAL JUSTICE (CRIM)</b></p> <p><b>CRIM-01 CRIMINOLOGY</b> (CSU breadth area D0) 3 units: 3 hours lecture. Advisory: ENGL-A.</p> <p>Crime control policies are critically examined regarding linkages among 1) social conflicts and inequalities, 2) criminal laws and enforcement practices, and 3) social deviance.</p> <table border="0"> <tr> <td>9971</td> <td>MW</td> <td>02:00p-05:05p</td> <td>Reed C</td> <td>LB-A-103</td> </tr> </table> <p>Section 9971 is held from 08/18/10 to 10/13/10.</p>		9971	MW	02:00p-05:05p	Reed C	LB-A-103	<p align="center"><b>ENGL-AL ACADEMIC LITERACY LAB</b> 1 unit: 3 hours lab. Two-way corequisite: ENGL-A. Advisory: ACM-50A.</p> <p>This is a computer-based lab designed to improve reading and writing skills through a variety of modalities, including individualized instruction and assistance.</p> <p>Students enrolling in a Los Baños Campus lab must enroll in a Los Baños Campus lecture.</p> <table border="0"> <tr> <td>4367</td> <td>MW</td> <td>08:00a-09:15a</td> <td>Serigaglia A</td> <td>LB-A-109</td> </tr> <tr> <td>4368</td> <td>MW</td> <td>12:30p-01:45p</td> <td>Flanagan J</td> <td>LB-A-109</td> </tr> <tr> <td>4371</td> <td>MW</td> <td>04:30p-05:45p</td> <td>Baker W</td> <td>LB-A-109</td> </tr> <tr> <td>4369</td> <td>TTh</td> <td>08:00a-09:15a</td> <td>Zabalbeascoa J</td> <td>LB-A-109</td> </tr> <tr> <td>4370</td> <td>TTh</td> <td>12:30p-01:45p</td> <td>Zabalbeascoa J</td> <td>LB-A-109</td> </tr> <tr> <td>8350</td> <td>MW</td> <td>08:30p-09:45p</td> <td>Baker W</td> <td>LB-A-109</td> </tr> </table> <p>9922 MTWTh 03:00p-04:15p Serigaglia A LB-A-109 Section 9922 is held from 10/18/10 to 12/16/10.</p>		4367	MW	08:00a-09:15a	Serigaglia A	LB-A-109	4368	MW	12:30p-01:45p	Flanagan J	LB-A-109	4371	MW	04:30p-05:45p	Baker W	LB-A-109	4369	TTh	08:00a-09:15a	Zabalbeascoa J	LB-A-109	4370	TTh	12:30p-01:45p	Zabalbeascoa J	LB-A-109	8350	MW	08:30p-09:45p	Baker W	LB-A-109															
9971	MW	02:00p-05:05p	Reed C	LB-A-103																																																	
4367	MW	08:00a-09:15a	Serigaglia A	LB-A-109																																																	
4368	MW	12:30p-01:45p	Flanagan J	LB-A-109																																																	
4371	MW	04:30p-05:45p	Baker W	LB-A-109																																																	
4369	TTh	08:00a-09:15a	Zabalbeascoa J	LB-A-109																																																	
4370	TTh	12:30p-01:45p	Zabalbeascoa J	LB-A-109																																																	
8350	MW	08:30p-09:45p	Baker W	LB-A-109																																																	
<p><b>CRIM-37 COMMUNICATION AND ETHICS IN LAW ENFORCEMENT</b> 3 units: 3 hours lecture. Advisories: ENGL-A; CRIM-01 or CRIM-02 or current employment as a law enforcement officer.</p> <p>This course covers the ethical issues created by the congruent and incongruent match of criminal justice philosophy and law enforcement practice. Effective communication styles for courtroom, testimony, interrogation, and verbal judo will be examined, evaluated, and practiced.</p> <table border="0"> <tr> <td>9972</td> <td>MW</td> <td>02:00p-04:50p</td> <td>Reed C</td> <td>LB-A-103</td> </tr> </table> <p>Section 9972 is held from 10/18/10 to 12/17/10.</p>		9972	MW	02:00p-04:50p	Reed C	LB-A-103																																															
9972	MW	02:00p-04:50p	Reed C	LB-A-103																																																	

## Attachment 2: Los Banos Campus Courses Fall 2010

<b>MERCED COLLEGE</b>		<b>209.384.6000</b>
LOS BAÑOS	<b>ENGL-01A COLLEGE COMPOSITION AND READING</b> (CSU breadth area A2) (IGETC area 1A) (CILC area G) 4 units; 4 hours lecture. Prerequisite: ENGL-A. Advisory: LRNR-30. Students write expository and argumentative essays—at least one of which is fully annotated—based on class readings and discussions. Students will acquire sophisticated reading and composing skills throughout the term.	
	4360 MW 10:00a-11:50a Serigaglia A LB-B-136	
	4364 MW 12:00p-01:50p McCandless M LB-B-134	
	4366 MW 02:00p-03:50p McCandless M LB-B-134	
	4362 TTh 10:00a-11:50a McCandless M LB-B-134	
	8364 MW 07:30p-09:20p McMunn-Tetangco E LB-B-136	
	8362 TTh 05:30p-07:20p Wilson J LB-B-134	
	<b>ENGL-13 CRITICAL REASONING AND WRITING (Also: PHIL-13)</b> (CSU breadth area A3) (IGETC area 1B) (CILC area G) 3 units; 3 hours lecture. Prerequisite: ENGL-01A. The course emphasizes the development of critical thinking skills through instruction in reading and writing arguments.	
	4366 TTh 12:30p-01:45p McCandless M LB-B-134	
	8347 W 07:00p-09:50p Albright I LB-B-107	
LOS BAÑOS	<b>ENGL-80 BASIC READING TACTICS I</b> 3 units; 3 hours lecture. Prerequisite: ENGL-90 or ESL-91. Two-way corequisite: ENGL-80L. This course is for students who already have a basic understanding of phonics and word analysis but who need additional work in building basic comprehension skills.	
	4391 TTh 02:00p-03:15p Withers M LB-B-135	
	8391 TTh 05:30p-06:45p Cates K LB-B-135	
	<b>ENGL-80L READING TACTICS LABORATORY</b> 1 unit; 3 hours lab. Prerequisite: ENGL-90 or ESL-91. Two-way corequisite: ENGL-80. Advisory: Concurrent enrollment in ENGL-83. The reading lab is designed to improve reading skills by providing individualized assistance through a prescriptive program based on individual reading strengths and needs.	
	4394 MW 02:00p-03:15p Kimoto S LB-A-110	
	4395 TTh 09:30a-10:45a Spevak J LB-A-110	
	4396 TTh 11:00a-12:15p Spevak J LB-A-110	
	4397 TTh 03:30p-04:45p Toconis M LB-A-108	
	4398 TTh 04:00p-05:15p Cates K LB-A-110	
	8394 TTh 07:00p-08:15p Cates K LB-A-110	
LOS BAÑOS	<b>ENGL-81 BASIC READING TACTICS II</b> 3 units; 3 hours lecture. Prerequisite: ENGL-80, 80L. Two-way corequisite: ENGL-81L. Advisory: Concurrent enrollment in ENGL-84. This course is for students who need to work applying reading comprehension skills and critical reading/thinking skills to pre-college level reading materials. Instruction will focus on strategies used to build reading skills.	
	4392 MW 11:00a-12:15p Withers M LB-B-112	
	4393 TTh 02:00p-03:15p Toconis M LB-B-134	
	8392 TTh 05:30p-06:45p McNally P LB-A-105	
	§§ 9924 MTWTh 01:00p-02:15p Serigaglia A LB-B-136 Section 9924 is held from 08/18/10 to 10/14/10.	
	<b>ENGL-81L READING TACTICS LABORATORY</b> 1 unit; 3 hours lab. Prerequisite: ENGL-80, ENGL-80L. Two-way corequisite: ENGL-81. Advisory: Concurrent enrollment in ENGL-84. The reading lab is designed to improve reading skills by providing individualized assistance through a prescriptive program based on individual reading strengths and needs.	
	4399 MW 02:00p-03:15p Kimoto S LB-A-110	
	4400 TTh 09:30a-10:45a Spevak J LB-A-110	
	4401 TTh 11:00a-12:15p Spevak J LB-A-110	
	4402 TTh 03:30p-04:45p Toconis M LB-A-108	
4403 TTh 04:00p-05:15p Cates K LB-A-110		
8395 TTh 07:00p-08:15p Cates K LB-A-110		
§§ 9900 MTWTh 03:00p-04:15p Serigaglia A LB-A-109 Section 9900 is held from 08/18/10 to 10/14/10.		
LOS BAÑOS	<b>ENGL-83 BASIC WRITING I - SENTENCE TO PARAGRAPH</b> 5 units; 5 hours lecture. Prerequisite: ENGL-90 or ESL-94. Advisories: Concurrent enrollment in ENGL-80, ENGL-80L. The student will have practice in constructing original sentences and paragraphs which demonstrate comprehension and application of basic grammatical concepts and patterns of standard English sentences and paragraphs.	
	4404 DAILY 09:00a-09:50a Kimoto S LB-B-135	
	<b>ENGL-84 BASIC WRITING SKILLS II - PARAGRAPH TO ESSAY</b> 5 units; 5 hours lecture. Prerequisite: ENGL-83. Advisory: Concurrent enrollment in ENGL-81. This course is devoted to developing competency in writing paragraphs and short essays by means of intensive practice in writing, including paragraph structure and development, focusing on short essays.	
	4414 DAILY 10:00a-10:50a Kimoto S LB-B-135	
	4410 DAILY 12:00p-12:50p Kimoto S LB-B-135	
	4412 MTWTh 03:30p-04:35p Withers M LB-B-136	
	<b>ENGL-80 BASIC LANGUAGE AND LEARNING SKILLS</b> 4 units; 4 hours lecture. Prerequisite/Advisory: None. This course is to assist language skill development of students. Instruction will place emphasis on phonics, fundamental reading comprehension, and basic sentence writing skills. It will also cover basic spelling and vocabulary skills.	
	4416 MTWTh 01:00p-01:50p Withers M LB-B-135	
	<b>GUIDANCE (GUID)</b>	
	<b>GUID-30 FOUNDATIONS AND STRATEGIES FOR COLLEGE SUCCESS</b> (CSU breadth area E) 3 units; 3 hours lecture. Advisory: ENGL-A; Compose essays at the ENGL-01A entrance level; Apply reading strategies and critical reading and thinking skills at ENGL-01A entrance level. This course focuses on the following topics: life management, goal setting, career decision making, educational planning, college expectations and opportunities, instructor-student relationships, cultural diversity, lifestyle choices affecting health maintenance, stress management, campus resources, learning styles and strategies, and study skills.	
4476 TTh 09:30a-10:45a Enos K LB-B-107 Section 4476 requires the purchase of access to the I(B)TI assessment for approximately \$12.60 and the Strong Interest Inventory for about \$8.25. Additional information will be provided in class.		
8478 T 05:30p-08:20p Rodriguez L LB-A-103 Section 8478 requires the purchase of access to the I(B)TI assessment for approximately \$12.60 and the Strong Interest Inventory for about \$8.25. Additional information will be provided in class.		



## Attachment 2: Los Banos Campus Courses Fall 2010

WWW.MCCD.EDU	FALL 2010
<p><b>GUID-48A CAREER SELF-ASSESSMENT</b> 1 unit: 1 hour lecture. Advisory: ENGL-A. In this course students will learn to appraise their self-esteem, values, skills and personality, and understand the implication of these factors in the selection of a vocational/educational goal. 9907 TTh 11:00a-12:15p Enos K LB-B-111 Section 9907 is held from 08/19/10 to 09/23/10. Section 9907 requires the purchase of access to the (AB7) assessment for approximately \$12.60 and the Strong Interest Inventory for about \$8.25. Additional information will be provided in class.</p>	<p><b>HIST-17B UNITED STATES HISTORY AND CALIFORNIA STATE AND LOCAL GOVERNMENT</b> (CSU breadth area C2/D5) (IGETC area 3B/4F) 3 units: 3 hours lecture. Advisories: ENGL-01A. This course is a continuation of HIST-17A from the end of the Reconstruction Period in 1877 to the present. It examines our national, state, and local history and government from the late 19th century to the present. 4498 MW 09:30a-10:45a Slack K LB-B-107</p>
<p><b>GUID-48B CAREER RESEARCH</b> 1 unit: 1 hour lecture. Advisory: ENGL-A. In this course the student will develop an understanding of a wide assortment of career information resources, both written and computer-assisted. The focus of the course is to introduce the student to the use of the most recent career-related technologies. 9908 TTh 11:00a-12:15p Enos K LB-B-111 Section 9908 is held from 09/25/10 to 11/04/10.</p>	<p style="text-align: center;"><b>MATHEMATICS (MATH)</b></p> <p><b>MATH-A BEGINNING ALGEBRA</b> 4 units: 4 hours lecture. Prerequisite: MATH-90. Advisory: ENGL-A. This course covers the order of operations, graphing and solving linear equations and inequalities, solving quadratic equations, systems of linear equations, exponents, polynomials, and a brief introduction to functions. 4579 TTh 12:00p-01:50p Bryan J LB-B-110 Section 4579 requires online homework. Please see <a href="http://www.mccd.edu/faculty/bryan/">www.mccd.edu/faculty/bryan/</a> for details. 4577 MTWTh 10:00a-10:50a Skeels K LB-B-106 8577 TTh 07:00p-08:50p Staff LB-B-110 9977 MTWTh 10:00a-11:50a Cuarenta Gallegos G LB-B-110 Section 9977 is held from 10/18/10 to 12/16/10. 9976 MTWTh 02:00p-03:50p Bryan J LB-B-110 Section 9976 is held from 08/18/10 to 10/14/10. Section 9976 requires online homework. Please see <a href="http://www.mccd.edu/faculty/bryan/">www.mccd.edu/faculty/bryan/</a> for details.</p>
<p><b>GUID-48C EMPLOYMENT SEARCH AND READINESS SKILLS</b> 1 unit: 1 hour lecture. Advisory: ENGL-A. In this course the student will be introduced to the importance and preparation of job applications, resume types, cover letters, interviewing techniques, and other strategies for successfully obtaining employment. 9909 TTh 11:00a-12:15p Enos K LB-B-111 Section 9909 is held from 11/02/10 to 12/16/10.</p>	<p><b>MATH-C INTERMEDIATE ALGEBRA</b> 4 units: 4 hours lecture. Prerequisite: MATH-A or MATH-B. Advisory: ENGL-A. This course covers functions and graphs, solving linear, quadratic, absolute value, piecewise defined, exponential, and logarithmic equations, rational expressions and equations, complex numbers, and conic sections. 4580 MTWTh 01:00p-01:50p Cuarenta Gallegos G LB-B-106 8579 MW 05:30p-07:20p Winburn J LB-B-110 8578 TTh 07:00p-08:50p Staff LB-B-106 9978 MTWTh 02:00p-03:50p Bryan J LB-B-110 Section 9978 is held from 10/18/10 to 12/16/10. Section 9978 requires online homework. Please see <a href="http://www.mccd.edu/faculty/bryan/">www.mccd.edu/faculty/bryan/</a> for details.</p>
<p><b>GUID-54 FOUNDATIONS AND STRATEGIES FOR ACADEMIC RECOVERY</b> 3 units: 3 hours lecture. Advisories: ENGL-81, ENGL-81L, ENGL-84. In this course the students will have an opportunity to cultivate the skills, values, and attitudes necessary to become confident, capable students. 4479 MW 09:30a-10:45a Hogue S LB-B-112</p>	<p><b>MATH-02 PRECALCULUS</b> (CSU breadth area B4) (IGETC area 2) 4 units: 4 hours lecture. Limitation on enrollment: This course is not open to students having credit in MATH-17, MATH-25 or MATH-26. Prerequisite: MATH-C or MATH-D. Advisory: ENGL-A. This course covers the real and complex numbers, functions, trigonometric functions, exponential and inverse functions, composition of functions, theory of equations, systems of equations, matrices, and topics in analytic geometry. 4576 MTWTh 09:00a-09:50a Cuarenta Gallegos G LB-B-110</p>
<p><b>GUID-80 COLLEGE SURVIVAL</b> 1 unit: 1 hour lecture. Advisories: ENGL-80, ENGL-83. College Survival is a course designed to increase the student's success in college and/or employment by assisting the student in obtaining information and skills necessary to reach his/her educational or employment objectives. 4477 W 11:00a-11:50a Hogue S LB-B-111</p>	<p><b>MATH-10 ELEMENTARY STATISTICS</b> (CSU breadth area B4) (IGETC area 2) 3 units: 3 hours lecture. Prerequisite: MATH-C. Advisory: ENGL-A. This course covers descriptive statistics, including organization and presentation of data; elementary probability including permutations, combinations, binomial and normal distributions; inferential statistics, including random sampling, hypothesis testing, regression, and correlation and chi-square distribution. 4578 MW 12:30p-01:45p Bryan J LB-B-110 8576 TTh 05:30p-06:45p Bryan J LB-B-110</p>
<p style="text-align: center;"><b>HEALTH (HLTH)</b></p> <p><b>HLTH-10 CONTEMPORARY HEALTH</b> (CSU breadth area E) 3 units: 3 hours lecture. Advisory: ENGL-A. This course surveys the human condition from birth to death. Emphasis is placed on the impact of personal choice throughout life. 8486 M 07:00p-09:50p Staff LB-B-106</p>	<p style="text-align: center;"><b>HISTORY (HIST)</b></p> <p><b>HIST-17A UNITED STATES HISTORY AND UNITED STATES CONSTITUTION</b> (CSU breadth area C2/D5) (IGETC area 3B/4F) 3 units: 3 hours lecture. Advisories: ENGL-01A. This is an extensive survey course of United States history from the period of exploration to the Reconstruction Period. The course covers the social, political, economic, and constitutional development of the nation. 4496 MW 09:00a-09:15a Slack K LB-B-107 9986 MTWTh 02:00p-03:15p Slack K LB-B-107 Section 9986 is held from 05/18/10 to 10/14/10.</p>
<p>• LOS BANOS CLASSES • 79</p>	

## Attachment 2: Los Banos Campus Courses Fall 2010

MERCED COLLEGE		209.384.6000		
LOS BANOS	<p><b>MATH-68ABC (1-2) LABORATORY EXPERIENCE IN MATHEMATICS (NON-TRANSFER LEVEL)</b> 1 unit; 3 hours lab. Prerequisite: MATH-80. One-way corequisite: MATH-A, MATH-B, MATH-C, or MATH-D. This course provides individualized instruction and technology-based instruction to augment courses in beginning or intermediate algebra. Each letter (i.e., ABC) may be taken only once.</p> <p><b>MATH-68A2</b> 4581 MW 03:30p-04:45p Winburn J LB-B-111</p> <p><b>MATH-68B2</b> 4583 MW 03:30p-04:45p Winburn J LB-B-111</p>	<p style="text-align: center;"><b>MUSIC (MUS)</b></p> <p><b>MUS-14 HISTORY OF AMERICAN POPULAR MUSIC</b> (CSU breadth area C1) (IGETC area 3A) 3 units; 3 hours lecture. Advisory: ENGL-A. This course is a study of the relationships of popular music to the social history of America. Emphasis is on styles and personalities of folk, blues, jazz, musical theater, country &amp; western, and rock 'n' roll. This course is designed for the non-music major.</p> <p>8626 M 07:00p-09:50p Faria M LB-A-103</p> <p><b>MUS-38A BEGINNING GUITAR</b> 2 units; 2 hours lecture. Advisory: ENGL-A. This course presents the opportunity to learn basic techniques of guitar performance. Instruction will be predominantly in the areas of folk, classical and popular styles and related techniques.</p> <p>8628 T 07:00p-09:50p Faria M LB-B-138</p> <p style="text-align: center;"><b>PHYSICAL EDUCATION (PHED)</b></p> <p><b>PHED-10D WEIGHT TRAINING</b> 0.5 - 1 unit; 1.5 - 3 hours lab. Advisory: Good general health; absence of medical conditions that would prevent planned physical activity. This is an open-laboratory experience for those people who desire an individualized strength program using a combination of exercise machines and free weights. This course may be repeated three times.</p> <p>8656 TTh 06:00p-07:15p Zuniga D LBHS Section 8656 is located at Los Banos High School; 1956 11th St; Room 602; Los Banos.</p> <p><b>PHED-10E FITNESS THROUGH ACTIVITY</b> 0.5 - 1 unit; 1.5-3 hours lab. Advisory: Good general health; absence of medical conditions that would prevent planned physical activity. Students will attain optimal levels of fitness by applying techniques used in a variety of team and/or individual activities. Drills and activities closely emulate actual conditions of competition performance. This course may be repeated three times.</p> <p><b>PHED-10E (1 unit) Pilates/Yoga</b> 4656 MWF 12:00p-12:50p Mendes D LBPC Section 4656 is located at Positive Changes; 1006 6th Street; Los Banos.</p> <p><b>PHED-10E (1 unit) Yoga</b> 4658 TTh 12:30p-01:45p Mendes D LB-B-137</p> <p><b>PHED-10E (1 unit) Body Shaping</b> 4657 TTh 04:30p-05:45p Gomes A LBREC Section 4657 is located at College Greens Park; 1816 College Greens Dr.; Los Banos.</p> <p><b>PHED-10H WALKING FOR CARDIOVASCULAR CONDITIONING AND FLEXIBILITY</b> 1 unit; 3 hours lab. Advisory: Good general health; absence of medical conditions that would prevent planned physical activity. This course is designed to improve cardiovascular efficiency, flexibility and strength through the use of walking and related activities. This course may be repeated three times.</p> <p>4659 TTh 08:00a-09:15a Gomes A LB-B-137 Section 4659 orientation meeting will be held in LB-B-137, all other class meets will be held off campus at Oliveira Park; corner of Ortigalita and Cardoza; Los Banos.</p>		
	<p><b>MATH-80 PREALGEBRA</b> 4 units; 4 hours lecture. Prerequisite: MATH-91. Advisories: ENGL-81, ENGL-81L. This course covers the real number system and operations of addition, subtraction, multiplication, and division including whole numbers, integers, decimals, fractions and application problems involving percents, ratios, proportions, and square roots.</p> <p>4603 TTh 02:00p-03:50p Wilson D LB-B-111</p> <p>4601 MTWTh 09:00a-09:50a Skeels K LB-B-111</p> <p>8601 MW 05:00p-06:50p Robinson D LB-B-111</p> <p>8602 MW 07:00p-08:50p Robinson D LB-B-111</p> <p>8901 MTWTh 10:00a-11:50a Cuarenta Gallegos G LB-B-110 Section 8901 is held from 08/18/10 to 10/14/10.</p>			
	<p><b>MATH-89ABCD MATH LABORATORY</b> .5 unit; 1.5 hours lab. Advisory: MATH-90. (Note: The letter designation indicates unit value, "A" being for 0.5 unit, "B" for 1 unit, etc., in 0.5 unit increments.) This course is a laboratory experience primarily to help students who have taken a math class but who still need additional work before they progress to the next math class. The number of hours and the number of assignments vary based on the units enrolled in. Each letter (i.e., A, B, C, or D) may be taken only once.</p> <p><b>MATH-89A</b> 4602 M 03:30p-04:45p Winburn J LB-B-111</p> <p><b>MATH-89B</b> 4604 MW 03:30p-04:45p Winburn J LB-B-111</p>			
	<p><b>MATH-90 FUNDAMENTALS OF ARITHMETIC</b> 3 units; 3 hours lecture. Advisory: ENGL-90. This course is an intensive review of the whole number system, including counting, notation, word names, and the number line. Written problems and life skills will be emphasized throughout the course.</p> <p>4605 MWF 10:00a-10:50a Bryan J LB-B-111</p>			
	<p><b>MATH-91 FUNDAMENTALS OF DECIMALS AND FRACTIONS</b> 3 units; 3 hours lecture. Prerequisite: MATH-90. Advisories: ENGL-90, ENGL-90L. The course covers the meaning of decimals and fractions, and the four basic operations using them: addition, subtraction, multiplication, and division. The course will conclude with an introduction to prime factoring, exponents, basic geometry, and order of operation.</p> <p>4609 TTh 12:30p-01:45p Wilson D LB-B-111</p> <p>8604 MW 05:30p-06:45p Staff LB-B-135</p> <p>8603 TTh 05:30p-06:45p Albertson I LB-B-111</p>			

**Attachment 2: Los Banos Campus Courses  
Fall 2010**

WWW.MCCD.EDU				FALL 2010			
<b>PHED-16 ADAPTED PHYSICAL EDUCATION</b> 1 unit; 3 hours lab. Advisory: Good general health; absence of medical conditions that would prevent planned physical activity. Advise that student provide medical verification of disability and recommendation of medical intervention. Adapted Physical Education provides individual instruction for the physically disabled student or other students requiring individual approaches to health-related fitness activities. May be repeated three times. 4660 MW 10:00a-10:50a Mendes D MCART Section 4660 is located at McArthur Apartments; 1130 F Street; Los Baños.				<b>PSYCHOLOGY (PSYC)</b> <b>PSYC-01A INTRODUCTION TO PSYCHOLOGY</b> (CSU breadth area D9) (IGETC area 4) (CILC area E) 3 units; 3 hours lecture. Advisory: ENGL-A. Special emphasis is given to the following topics: schools of psychology; physiological factors, sensation, perception, motivation, learning, thinking, emotion, abnormal behavior, personality, heredity, environment, and social factors. 4703 MW 08:00a-09:15a Hogue S LB-B-106			
<b>PHILOSOPHY (PHIL)</b> <b>PHIL-13 CRITICAL REASONING AND WRITING (Also: ENGL-13)</b> (CSU breadth area A3) (IGETC area 1B) (CILC area G) 3 units; 3 hours lecture. Prerequisite: ENGL-01A. The course emphasizes the development of critical thinking skills through instruction in reading and writing arguments. 4646 TTh 12:30p-01:45p McCandless M LB-B-134 8646 W 07:00p-09:50p Albright I LB-B-107				<b>PSYC-22 HUMAN SEXUALITY</b> (CSU breadth area D9/E) (IGETC area 4) 3 units; 3 hours lecture. Advisory: ENGL-A. Biological, psycho-social, and socio-cultural research is presented concerning all aspects of human sexuality in contemporary society. 8701 M 07:00p-09:50p Sanchez G LB-B-107			
<b>PHOTOGRAPHY (PHOT)</b> <b>PHOT-11A DIGITAL CAMERA BASICS</b> 3 units; 2 hours lecture, 3 hours lab. Advisory: ENGL-A. This course introduces students to digital cameras through lectures, hands-on experience, and computer use. Instruction includes digital camera functions, technical and creative control, computer processing of images, and digital output options. 8651 MW 05:30p-07:45p Staff LB-A-119 Section 8651 requires the purchase of 80 Digital/Photo print cards from Student Fees to cover the cost of paper and ink for class projects. Students may expect to purchase up to three cards for the course.				<b>SOCIOLOGY (SOC)</b> <b>SOC-01 INTRODUCTION TO SOCIOLOGY</b> (CSU breadth area D0) (IGETC area 4J) 3 units; 3 hours lecture. Advisories: ENGL-01A. The course begins with the understanding of the differences between personal troubles and public issues, and how sociologists apply various theoretical perspectives to a wide range of issues, such as: culture; socialization; social structure of society; deviance; issues of feminization; family; gender; race; inequality; economics; politics and population; and the relationship between the individual and society. 4731 TTh 12:30p-01:45p Cocallos K LB-B-107 8733 W 05:30p-09:20p Bernu M LB-B-106			
<b>PHYSICS (PHYS)</b> <b>PHYS-10 CONCEPTS IN PHYSICS</b> (CSU breadth area B1) (IGETC area 5A) 3 units; 3 hours lecture. Advisories: ENGL-A; MATH-A or MATH-B. This course is a survey of major concepts covered in physics. The concepts, as well as the understanding of general principles, will be developed through lecture, demonstrations, and discussion of everyday phenomena. 8676 TTh 05:30p-06:45p Pourtanvird Z LB-B-106				<b>SPANISH (SPAN)</b> <b>SPAN-01 ELEMENTARY SPANISH</b> (CSU breadth area C2) (IGETC area 6) 5 units; 5 hours lecture. Advisory: ENGL-84. This course will focus on the development of listening, speaking, reading, and writing in a cultural context, with primary emphasis on communicative competency. 4748 TTh 11:00a-01:15p Cortes S LB-B-112 8746 MW 05:30p-07:45p Wynne C LB-B-112			
<b>POLITICAL SCIENCE (POSC)</b> <b>POSC-01 ESSENTIALS OF AMERICAN POLITICAL SYSTEM</b> (CSU breadth area D8) (IGETC area 4H) 3 units; 3 hours lecture. Advisory: ENGL-A. The course includes a study of the United States Constitution and its application to federal, state, and local government. Emphasis is placed upon various roles of national and state government, constitutional rights and obligations of citizens, and the evolution and development of California state political institutions. 4698 TTh 11:00a-12:15p Slack K LB-B-107 9997 MTWTh 02:00p-03:15p Slack K LB-B-107 Section 9997 is held from 10/18/10 to 12/16/10.				<b>SPAN-10 SPANISH FOR SPANISH SPEAKERS</b> (CSU breadth area C2) (IGETC area 3B/6) 5 units; 5 hours lecture. Advisory: ENGL-84 or high school Spanish 2; LRNR-30. This course is designed for students who are fluent in Spanish and who are ready to develop literacy skills. 8750 TTh 05:30p-07:45p Wynne C LB-B-112			
<b>• LOS BAÑOS CLASSES • 81</b>							



**Attachment 3: Degrees/Certificates (50% or more) available at Los Banos Campus**

**Los Banos Campus Degree Offerings  
2009-2010 Catalog**

<b>Degree</b>	<b>TOP CODE</b>	<b>Units possible at LB</b>	<b>Total Units in Major</b>	<b>% in LB</b>
Accounting AA	05000.AA	24	30	80%
Accounting CT	05000.CT	24	30	80%
Nurse Assistant CT	12150.CO	5.5	5.5	100%
Anthropology AA (Archeology)	22300.AA	10	18	56%
Anthropology AA (Cultural)	22100.AA	10	18	56%
Anthropology AA (Physical)	22200.AA	11	18	61%
Art and Humanities AA	49800.AA	12	18	67%
Biology AS*	04100.AS	15	30	50%
Biotechnology AS	04130.AS	19	29	66%
Biotechnology CT	04130.CL	16	27	59%
Business Administration AA	05100.AA	31	31	100%
General Business AA	05150.AA	23	23	100%
General Business CT	05150.CT	23	30	77%
Child Development AA	13010.AA	24	24	100%
Early intervention Assistant CT	13490.CT	30	30	100%
Communications AA	15601.AA	18	24	75%
Management Information Systems AS	07300.AS	25	31	81%
Criminal Justice AA	21150.AA	21	24	88%
Criminal Justice CT	21150.CT	21	24	88%
CSU General Education Breadth	49100.CT	39	39	100%
Foster Care Education CL	13200.CO	15	15	100%
Health Sciences AA	12300.AA	19	19	100%
History AA	22300.AA	15	18	83%
IGETC	49200.CT	34	34	100%
International Studies AA	22700.AA	18	18	100%
Lab Technology AS	09700.AS	15	24	63%
Liberal Studies AA	49501.AA	28	34	82%
Life Science AA	04300.AA	13	18	72%

**Attachment 3: Degrees/Certificates (50% or more) available at Los Banos Campus  
Continued**

**Los Banos Campus Degree Offerings  
2009-2010 Catalog**

<b>Degree</b>	<b>TOP CODE</b>	<b>Units possible at LB</b>	<b>Total Units in Major</b>	<b>% in LB</b>
Supervisory Training AA	05450.AA	15	30	50%
Small Business Management AA	05400.AA	18	30	60%
Supervisory Training CT	05450.CT	15	30	50%
Small Business Management CT	05400.CT	18	30	60%
Merchandising Management AA	05350.AA	18	30	60%
Merchandising Management CT	05350.CT	18	30	60%
Natural Studies AA	49820.AA	18	18	100%
Physical Science AA	19600.AA	10	18	56%
Psychology AA	20500.AA	18	18	100%
Social & Behavioral Sciences AA	22600.AA	18	18	100%
Spanish AA	11600.AA	13	26	50%
Visual Arts AA	10700.AA	15	30	50%

\*NOTE: - needs Botany, last offered Spring 2000

**Merced College**

**Philosophy**

A democratic society functions best when its members are educated and active participants. To encourage this participation, Merced College provides educational opportunity for all who qualify and can benefit. This education involves having a respect for, and awareness of, all cultures, as well as the dignity and worth of all individuals. Merced College is dedicated to the pursuit of excellence. The leadership and educational services provided by the College reflect and enhance the cultural, economic, and social life of the community and respond to its changing needs and interests. Recognizing that learning is a life-long process, the College provides preparation for a complex and changing society while maintaining high academic standards. The College also fosters individual learning and critical thinking to enhance awareness of the inter-relationship and inter-dependence of all persons.

**Mission**

Students are our focus and we are known by their success.

**Vision Statement**

Students are our focus at Merced College. We set high standards to encourage students to reach their highest potential in a supportive environment. Diversity is a strength of our institution. Merced College is a leader in instruction and cultural activities. We value and respect all members of our community. We are known by the success of our students.

**Core Values and Beliefs**

- Students –past, present, and future– are the focus of Merced College.
- Fostering diversity is a strength of the institution.
- Merced College establishes high standards and provides a challenging education to encourage students to reach their highest potential.
- Merced College respects and values all members of its community.
- Merced College serves the community by responding to cultural, educational, economic development, and technological needs.
- Merced College provides a supportive and fulfilling environment.

## **Attachment 5: Excerpts from Educational/Facilities Master Plan Vision 2020**

### **Commitments**

To Students...

Provide quality instructional resources and services to students in all areas of the District.

### **Responses**

Meeting Student Needs...

Meet the needs of increasing numbers of students seeking transfer, vocational, and developmental education

Institute a curriculum which has an interdisciplinary focus and emphasizes increased multi-cultural, global awareness

Provide adequate technological, physical, outreach and support facilities for the benefit of all students

Meeting Community Needs...

Meet the needs of expanded population growth by maintaining extended education centers in communities throughout the District

Schedule classes so they are accessible to all members of area communities

Build additional facilities needed for “hands-on” training in diverse skills and occupations

Meeting Institutional Needs...

Provide adequate technological, physical, outreach and support facilities for the mutual benefit of faculty and staff members

### **Enrollment Demand**

Increases in “other” participation rates in outlying communities will improve the access of these isolated populations to the College program.

### **Future Delivery System Considerations**

Merced College represents a “District-wide” commitment to the obligation to provide needed, required and responsive programs and services throughout the entire service area.

It is apparent that instructional services must be delivered throughout the entire District.

**Attachment 5: Excerpts from Educational/Facilities Master Plan  
Continued**

**Enrollment Demand: The Participation Rate Approach.**

Definition of the Service Area. A map of the service area provided by the College set the inside boundary of the *official service area*. In general, it is defined by the metes and bounds of the following school districts:

Merced Union High School District: Ten elementary school feeder districts: Atwater, Ballico-Cressey, El Nido, Livingston, Merced City Elementary, Merced River, McSwain, Snelling-Merced River, Weaver, and Winton.

Delhi Unified School District: Encompasses the Delhi Elementary Schools and High School.

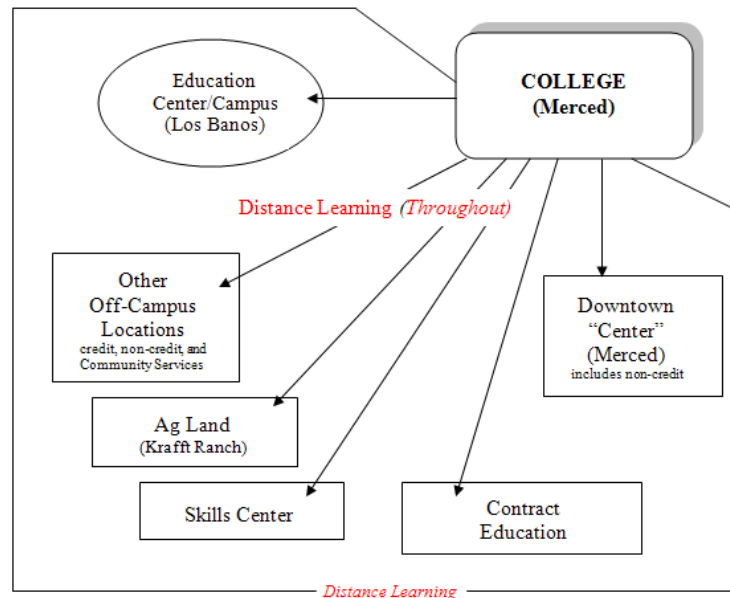
Los Banos Unified School District: Consists of Charleston, Los Banos, R.M. Miano, Henry Miller, and Volta Elementary Schools, Los Banos Junior High School, Los Banos and San Luis High Schools.

Dos Palos School Districts: Consists of George Christian School, Dos Palos School, Dos Palos High School, West Side High School.

Chowchilla Union High School District: Three elementary schools and one middle school located within the Chowchilla City limits.

Le Grand High School: Includes Le Grand Elementary School.

**Delivery Plan Scenario 2020**



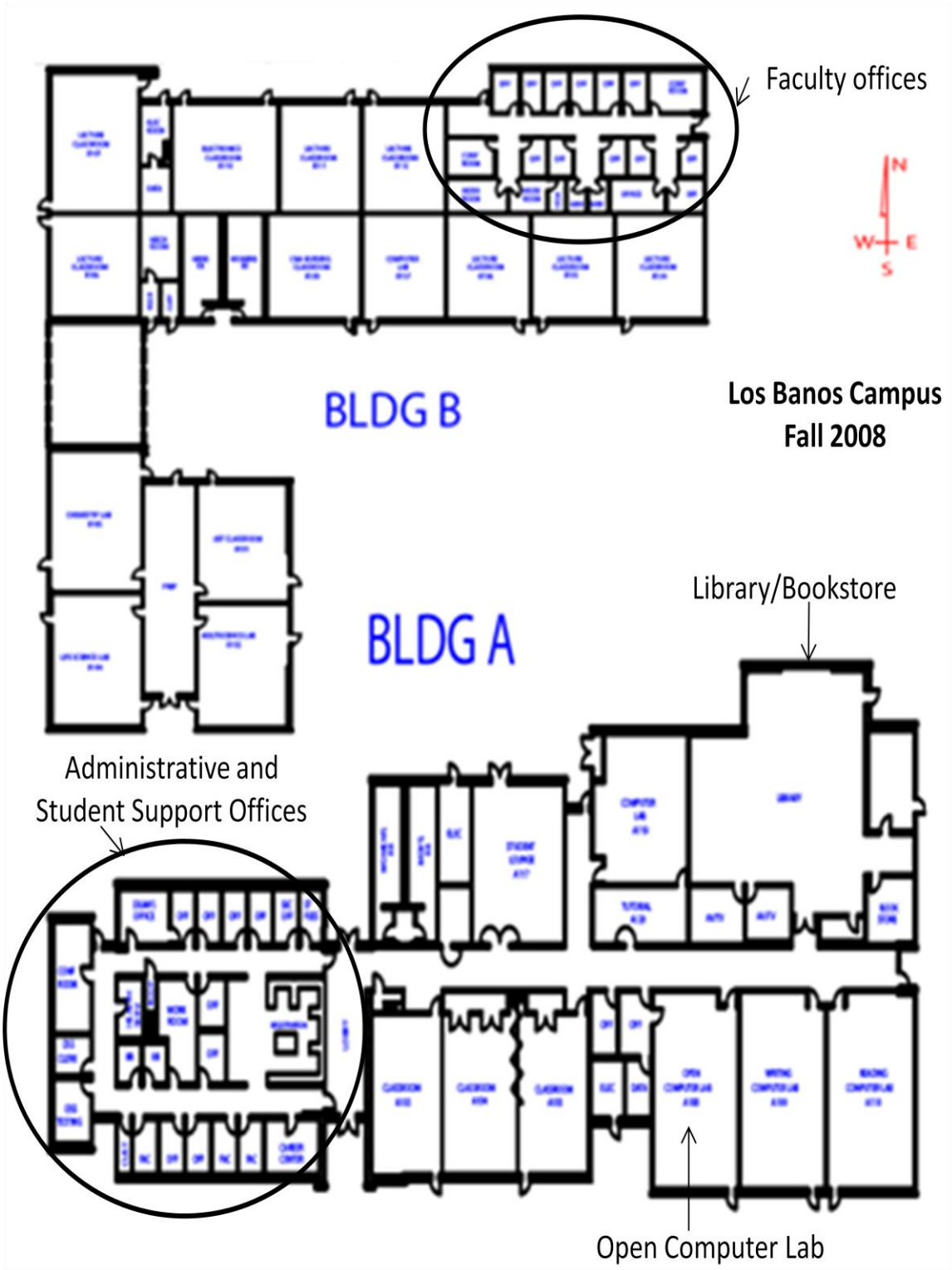
**Attachment 5: Excerpts from Educational/Facilities Master Plan  
Continued**

**Participation Rates  
Population Centers in Service Area  
Merced College**

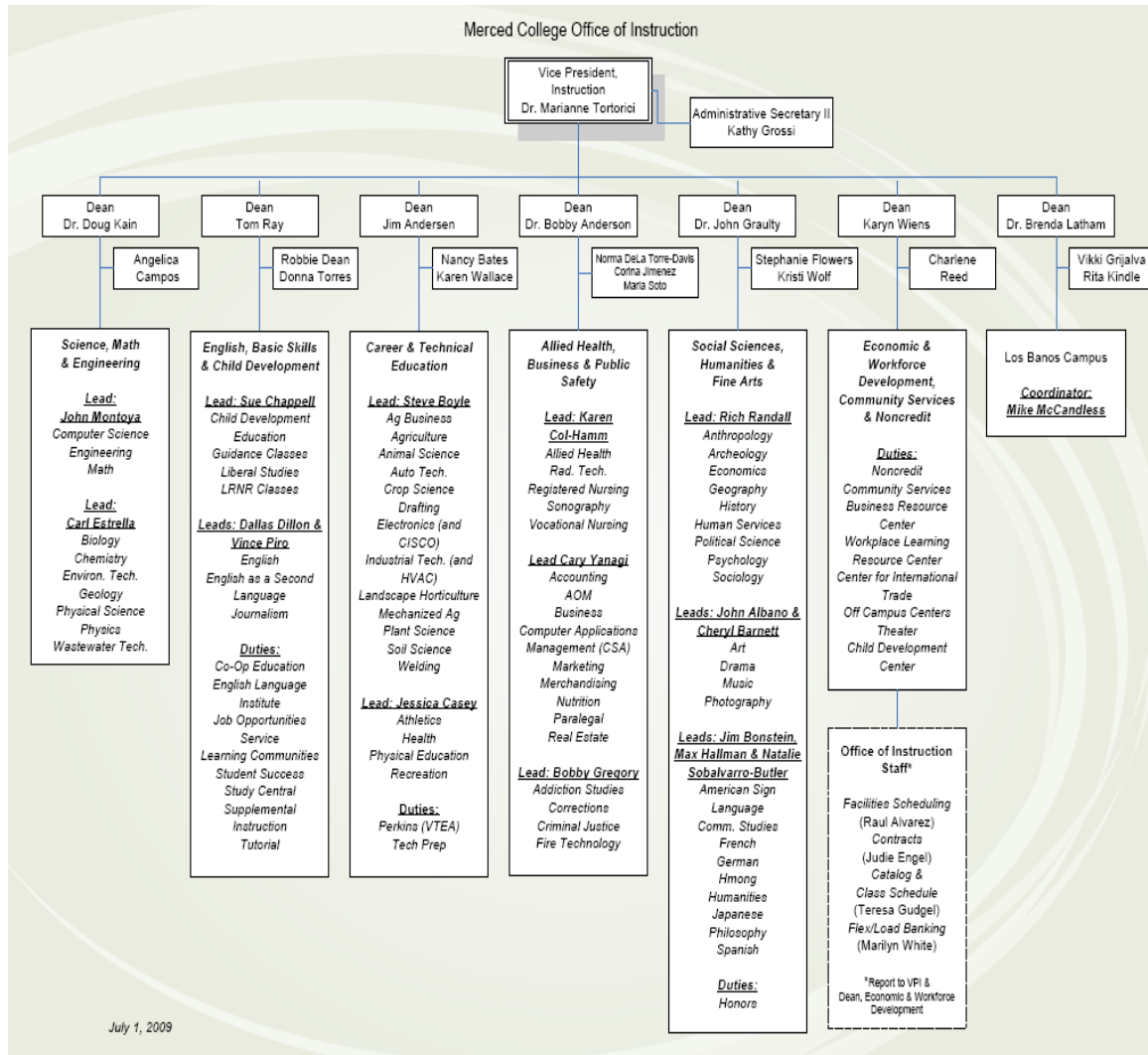
	<b>Fall</b>	<b>Spring</b>
<b>City</b>	<b>1993</b>	<b>2000</b>
Merced	6.35%	7.4%
Atwater	6.27%	6.4%
Los Banos	4.65%	6.0%
Dos Palos	3.23%	4.4%
Livingston	3.14%	5.7%
District Average	5.15%	6.2%
Statewide Average	4.00%	



Attachment 6: Los Banos Campus Map



## Attachment 7: Office of Instruction Organization Chart



**Attachment 8: District Agenda, August 2010**

MERCED COLLEGE  
Office of the President

**BOARD AGENDA BACKUP**

PRESENTED TO THE BOARD OF TRUSTEES OF THE  
MERCED COMMUNITY COLLEGE DISTRICT  
AT THE AUGUST 3, 2010 MEETING OF THE BOARD

Item: Substantive Change Proposals to be Submitted to the Accrediting  
Commission

Presented by: Anne Newins

\_\_\_\_\_ For Information        X     For Action

Background Information

The Accrediting Commission for Community and Junior Colleges requires approval of proposed changes in the mode of instructional delivery, including location and style of delivery. These documents are titled “Substantive Change Proposals.” The approvals are required whenever fifty percent or more of a degree or certificate may be completed in the new mode. The Commission’s primary purpose for requiring the proposals is to ensure that the new methods of delivery meet their standards in all areas, including supportive services and access to library materials.

Due to the expansion of the Los Banos Campus, the number of programs where students can complete more than fifty percent has increased markedly. The programs are listed in the attachment.

The number of online classes also has increased. Not all online classes are being offered, but because they have been approved by the Curriculum Committee, the Accrediting Commission should also be informed. These courses also are listed in the second attachment.

Because of the difference in delivery method (Los Banos Campus and online), two proposals must be submitted.

Recommended Action

It is recommended that the Board of Trustees approved the Substantive Change Proposals for online courses and additional programs/certificate classes now available at the Los Banos Campus.

Attachments

1. Substantive Change Proposal for New Online Classes
2. Substantive Change Proposal for Additional Courses at the Los Banos Campus

## Attachment 9: Chancellor's Office Site Approval Correspondence

MERCED COMMUNITY COLLEGE DISTRICT  
3600 M Street, Merced, California 95348-2898  
Telephone: 209/384-6000 • Fax: 209/384-6043



Benjamin T. Duran, Ed.D.  
Superintendent/President  
**BOARD OF TRUSTEES**  
Jinet Troost, Board Chair  
Lewis S. Braxton, Vice Chair  
Eva de Long, Clerk  
Jim Glidden  
Les McCabe  
Eugene J. Vierra  
Robert Haden

March 23, 2001

Tom Nussbaum, Chancellor  
California Community Colleges  
1102 Q Street  
Sacramento, CA 95814

Dear Chancellor Nussbaum:

This letter is in reference to the siting of the proposed Los Banos off campus center for Merced Community College District. With this letter it is my intent to notify the Chancellor's Office that the site being proposed in Los Banos is a grandfathered site that has been relocated. The new site is superior to the grandfathered site because it is larger, is located closer to the population center, and provides more space for growth in the next 20 years in order to meet the needs of the community and surrounding area.

The Los Banos off campus center has become critical to meeting the educational and economic development needs of the community, the City of Los Banos, and the west side of the county. The sphere of influence the Los Banos Campus would serve is the fastest growing part of Merced County. Los Banos is the window to the Silicon Valley for Merced County; and as a result, is experiencing growth at a greater rate than the rest of the region. The Los Banos off campus center will not interfere with the delivery of service by another community college district in the region. West Hills College, the neighboring district, is 80 miles from Los Banos. The original grandfathered site was more restrictive for a number of reasons and its remoteness from the population center would have required a significantly oversized infrastructure just to get water, sewer, and electronic infrastructure to the site.

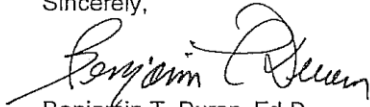
Additionally, the property was adjacent to environmentally sensitive wetlands. This proximity to an ecologically sensitive area was cause for ardent objection from a number of environmental groups to the development of the college and the property surrounding the college. As a result, the ultimate development of the center on this site would have required substantial infrastructure costs, as well as political battles that have been eliminated with the relocation to the current, proposed site.

## Attachment 9: Chancellor's Office Site Approval Correspondence

Page 2

I trust this letter addresses the issue of relocation of the grandfathered site. I am prepared to answer any questions or respond to any concerns that may arise with respect to this site.

Sincerely,



Benjamin T. Duran, Ed.D.  
Superintendent/President

BTD:dm

cc: Frederick E. Harris, Director, College Finance and Facilities Planning  
Walt Reno, Specialist, Facilities Planning and Utilization  
Virginia Yang-Staehlin, Specialist, Facilities Planning and Utilization  
Beth Graybill, California Postsecondary Education Commission  
David Younger, Lionakis Beaumont Design Group Inc.

bcc: Jerry Johnson  
Annie Hawkins  
T. Ruscoe  
Sheila for FRP

## Attachment 9: Chancellor's Office Site Approval Correspondence

Subject: Letter To Chancellor's Office regarding Los Banos Site

Date: Tue, 20 Mar 2001 15:18:45 -0800

From: Terry Ruscoe <ruscoe@merced.cc.ca.us>

To: De Merino <DMerino@merced.cc.ca.us>

De:

See the (bold/red) issues below. As you know, we are ready and are submitting the FPP so item (1) has been addressed. Item (2), Gin wants a letter (preferably from Ben) specifying the reasons for choosing the current site (it is important that we use her words). In addition to the cc's she requests please add Dave Younger at Lionakis Beaumont Design Group at 1919 Nineteenth Street, Sacramento, CA 95814. If you have any questions please contact me. As usual this is an ASAP. Thank you.

-Terry

Terry,

Thanks for the talk this morning. Here we go...

The attached memo says:

FPPs, IPPs and 5-year plan: 2003-04 FPPs and 5-year plan, and 2004-05 IPPs are due by May 1, 2001.

We are calling for one FPP per site per category. We categorized IPPs based on the information from the IPPs, so if you think we didn't do it right, let's talk.

We are calling for FPPs for 1) Los Banos' Site Development and Initial Facilities (two FPPs may be submitted - one for site develop and the other for buildings; still considered as same project) as Category B; 2) Merced's LRC as Category B, 3) Merced's Science Bldg Remodel as Category C; and 4) Merced's Fire Loop Road as Category D-2.

As we discussed, we can negotiate on what actually walks into the Chancellor's Office on that date - let's keep communications open.

Los Banos

1) readiness: is submitting an FPP for Los Banos premature? Where is the site in the CEQA process? When will it be finished? Where is the city/county in providing utilities/roads/infrastructure to the site? If we provide funding starting in 2003-04, will the site/district be ready to go?

2) notification to the CO: this is a grandfathered site that has been relocated. If this site is "it", we will need a letter from the district to the CO (and we will forward the letter to CPEC) that says:

this was originally a grandfathered site;

-the relocation to the new site is better than the grandfathered site because is larger, better located, providing more space for growth in the next \_\_\_ years to meet the educational needs of the community, etc; the grandfathered site was restrictive because....

-the relocation of the site does not impact the center's sphere of influence nor does it encroach on another community college's service area (say something like this is the only game in town for X number of miles), population is not being adequately served, etc

-address letter to Tom Nussbaum with cc's to Fred Harris, Walt Reno, me, and to Beth Graybill (at CPEC)



## Attachment 9: Chancellor's Office Site Approval Correspondence

If your Dave at LB has any questions, needs help, talk to me. If you have any questions, please talk with me.

Thanks!  
Gin

-----Original Message-----

From: Harris, Fred  
Sent: Wednesday, March 07, 2001 2:44 PM  
To: Nussbaum, Tom; Lenz, Patrick  
Cc: Barth, Paul; Clevenger, Dale; gyangsta; Larry, Cheryl; McCoy, Jannette; Petavini, Shelley; Reno, Walt; Rogaski, James; Walton, Richard; Yeager, Susan  
Subject: Capital Outlay Submittals due May 1, 2001

Memorandum

March 7, 2001

FP 01-02  
Via E-Mail

To: Chief Executive Officers  
Chief Business Officers  
Facilities Planners  
Other Interested Parties

From: Frederick E. Harris, Director  
College Finance and Facilities Planning

Subject: Capital Outlay Submittals due May 1, 2001

Synopsis: The purpose of this memorandum is to inform you of the following capital outlay submittals due from the districts into the Chancellor's Office by May 1, 2001:

1. 2003-04 Final Project Proposals
2. 2004-05 Initial Project Proposals
3. 2003/04 - 2007/08 5-Year Capital Outlay Plan

Enclosed please find a list of "Potential 2003-04 FPP Candidates" as a reference to guide your district's capital outlay submittals for funding consideration for "new-start" Final Project Proposals (FPPs) for 2003-04 due on May 1, 2001. This is a list of those Initial Project Proposals (IPPs) and FPPs previously submitted that in our estimation look the most promising to qualify for state funding in 2003-04 as new-start projects. All submittals will first be considered for scope approval. If approved, projects will be considered and then possibly prioritized for funding per the updated capital outlay criteria adopted by the Board of Governors (BOG) in November 1999. The highest priority for funding will be given to any category A-1 critical life/safety and/or A-3 seismic deficiency projects. If you have a project on the list and desire to submit it for funding consideration for 2003-04, first please contact your facilities specialist and then be prepared to submit a FPP by

## Attachment 9: Chancellor's Office Site Approval Correspondence

May 1, 2001. Districts wishing to submit FPPs for projects not on this list should first contact their Chancellor's Office facilities planner. IPPs for 2004-05 are also due on May 1, 2001.

Due to the magnitude of out-year commitments from previously funded and proposed 2002-03 new-start projects, only a limited number of new-start projects are likely to be funded in 2003-04. While a district may submit up to five FPPs (one from each Category B - F) for each site for 2003-04, BOG policy limits the spending plan to one proposal per site if funds are available. Again, only one project per approved site (unless critical category A-1 life/safety or A-3 seismic) can ultimately be considered for funding in any given fiscal year.

Growth related projects with a capacity-to-load ratio greater than 100% or modernization projects that add gross square footage beyond what is required to correct code deficiencies will not be considered for funding. Unfunded proposals previously approved by the BOG will be "rolled forward" for 2003-04 funding consideration. Other potential new-start projects included on the list are those that you have previously documented with an IPP. Refinement to the BOG capital outlay prioritization criteria is currently going through the consultation process and may require additional project information at a later date. FPP submittal to the Chancellor's Office does not guarantee acceptance into the next budget cycle.

The need to advance the due date from February 1, 2002 to May 1, 2001 is in response to recently enacted legislation (AB 1473, Statutes of 1999) which requires all state agencies to develop a comprehensive capital outlay five-year plan. Instead of submitting the system's proposed Capital Outlay Plan with approved FPPs to the Department of Finance on August 1st, the Chancellor's Office is now required to submit proposed projects and the systemwide five-year plan six months earlier on February 1st of each year. This new, advanced deadline necessitated the Chancellor's Office to also advance the district submittal dates for IPPs, FPPs and five-year plans to May 1st of each year. A draft of the systemwide 2002/03 - 2006/07 plan was introduced to the BOG at their January 2001 meeting, and approval of this final systemwide 5-year plan is scheduled for the March 2001 meeting. For additional information regarding this systemwide five-year plan and the requirements of AB 1473, see the BOG March 2001 agenda item online at <http://www.cccco.edu/cccco/bog/March Order/13-Capital Outlay Plan.pdf>.

Therefore, the districts' five-year capital outlay plans for 2003/04 - 2007/08 are due May 1, 2001. The new software must be used for this and all future 5-year plan submittals. If you haven't already done so, please start using the new software as soon as possible so you can turn in your five-year plan by May 1st and begin to familiarize yourself with the program for any upcoming space inventory changes due October 1st. Instructions, prior district data, and software for Space Inventory and Five-Year Plan Program are located on the Facilities Planning Unit's Server.

Action/Date Requested: Districts are encouraged to contact their Chancellor's Office facilities specialist to discuss which FPPs to submit for 2003-04. Therefore, the following items are due into the Chancellor's Office by May 1, 2001 and should be calculated with a building construction cost index (BCCI) of 4019:

- 2003-04 FPPs
- 2003/04 - 2007/08 Five-Year Capital Outlay Plans
- 2004-05 IPPs

Contact: If you have any questions, please contact your facilities specialist or me at (916) 324-9508 or fharris@cccco.edu.

Attachment

\*\*\*\*\*  
Frederick E. Harris, Director  
College Finance & Facilities Planning

## Attachment 9: Chancellor's Office Site Approval Correspondence

Chancellor's Office, California Community Colleges

1102 Q Street, Fourth Floor  
Sacramento, CA 95814-6511

fharris@ccccc.edu  
916/324-9508  
916/323-8245 FAX

\*\*\*\*\*

## Attachment 9: Chancellor's Office Site Approval Correspondence

CHANCELLOR'S OFFICE (916) 322-4005

CALIFORNIA COMMUNITY COLLEGES  
1238 S STREET  
SACRAMENTO, CALIFORNIA 95814  
(916) 445-8752

RECEIVED

APR 26 1979



OFFICE OF THE PRESIDENT

April 25, 1979

Dr. W. C. Martineson  
Superintendent/President  
Merced Community College District  
3600 M Street  
Merced, CA 95340

Dear Bill:

The materials your district submitted requesting approval of the Los Banos Center as an educational center have been received and are judged to be in compliance with state statutes. This letter constitutes approval of the Los Banos Center as an educational center as defined in Education Code Sections 81823 and 81824.

Facilities for the center are not considered a part of this approval. Please contact Ed Rodgers or Ray Slattery in our Facilities Planning Unit, phone (916) 445-8283, for further information on capital outlay.

Sincerely,

A handwritten signature in cursive script, appearing to read "Bill", written over the printed name of William G. Craig.

William G. Craig  
Chancellor

WGC/mh

cc: Bill Storey  
Gus Guichard  
Allan Petersen

**Attachment 10**  
**Budgetary Information by Selected Expenditure Areas**

Summary Table  
 Los Banos Campus Expenditures on Instructional Employees

Fiscal Year	1300 Expense for Adjunct instructors and Overload	FT Instruction Salaries	Total teaching salaries
2006	\$543,324.40	\$480,208.00	\$1,023,532.40
2007	\$528,711.07	\$580,747.03	\$1,109,458.10
2008	\$628,059.87	\$729,513.46	\$1,357,573.33
2009	\$663,184.91	\$731,958.97	\$1,395,143.88

Fiscal Year	Total teaching salaries
2006	1,023,532.40
2007	1,109,458.10
2008	1,357,573.33
2009	1,395,143.88

Summary Table  
 Los Banos Campus Expenditures on Classified Staff

	2007	2008	2009	2010
Contract Employees	\$253,536.59	\$396,803.74	\$436,132.41	\$457,865.83
Hourly	\$26,152.25	\$19,779.64	\$30,859.59	\$10,242.04
Total Classified	\$279,688.84	\$416,583.38	\$466,992.00	\$468,107.87

Summary Table  
 Los Banos Campus Administration

Fiscal Year	Salary
2007	\$90,431.04
2008	\$101,343.96
2009	\$107,415.00
2010	\$112,785.96



**Attachment 10 Continued**  
Summary Table

Instructional Supplies and equipment

		2007	2008	2009	2010
GEN SPLY	DEAN	\$3,192.00	\$6,276.73	\$9,833.43	\$7,743.48
1x Gen supply	DEAN				\$3,499.74
GEN SPLY	STU PERS ADM	\$1,848.65	\$2,767.17	\$3,031.45	\$2,051.48
		<b>\$5,040.65</b>	<b>\$9,043.90</b>	<b>\$12,864.88</b>	<b>\$13,294.70</b>
MAINT SPLY	MAINT	\$2,674.55	\$4,055.45	\$6,633.95	\$5,172.14
1x MAINT SPLY	MAINT				\$4,966.70
CUST SPLY	CUSTODIAL	\$2,683.74	\$7,740.14	\$10,756.44	\$7,587.43
1x CUST SPLY	CUSTODIAL				\$1,898.00
GRND SPLY	GROUND	\$3,462.94	\$3,953.62	\$2,915.74	\$3,358.60
CHEMICAL	GROUND	\$0.00	\$0.00	\$282.02	\$268.31
IRRIGATN	GROUND	\$96.93	\$281.17	\$982.39	\$288.08
		<b>\$8,918.16</b>	<b>\$16,030.38</b>	<b>\$21,570.54</b>	<b>\$23,539.26</b>
INST					
SPLY/EQUP	BIOLOGY	\$3,285.00	\$14,365.00	\$15,645.17	\$11,875.27
INST SPLY	BUS	\$453.00	\$436.76	\$436.00	\$450.88
INST SPLY	COMP SCI	\$531.00	\$405.15	\$355.00	\$1,971.14
INST SPLY	ARTS	\$79.34	\$0.47	\$4,104.55	\$203.40
INST SPLY	CONSUMER SCI	\$176.00	\$0.55	\$574.58	\$212.33
INST SPLY	ENGL	\$159.82	\$208.91	\$344.58	\$454.37
INST SPLY	PHIL	\$49.90	\$60.00	\$76.51	\$0.00
INST SPLY	MATH	\$198.36	\$196.63	\$123.14	\$0.00
INST SPLY	PHYS SCI	\$505.00	\$0.00	\$517.26	\$537.28
INST SPLY	CHEM	\$0.00	\$0.00	\$0.00	\$2,071.90
INST SPLY	LIB	\$113.58	\$513.48	\$645.13	\$138.75
MATS	ARTS	\$0.00	\$1,093.63	\$752.07	\$575.34
		<b>\$5,551.00</b>	<b>\$17,280.58</b>	<b>\$23,573.99</b>	<b>\$18,490.66</b>

Utility Expenditures 2007-2010, Los Banos Campus

Fiscal Year	ELECTRICITY	GAS	WATER	SEWAGE	REFUSE	TELEPHONE	Total Utilities
2007*	\$84,074.16	\$2,285.04	\$4,323.75	\$2,227.44	\$3,885.73	\$1,941.22	\$98,737.34
2008	\$150,573.01	\$32,058.67	\$13,767.73	\$2,459.30	\$6,219.81	\$3,471.90	\$208,550.42
2009	\$127,704.49	\$30,973.40	\$15,474.52	\$3,134.25	\$6,697.53	\$2,128.12	\$186,112.31
2010	\$128,280.12	\$34,578.51	\$10,934.16	\$2,696.58	\$7,231.87	\$1,997.79	\$185,719.03

\* Last year in previous campus